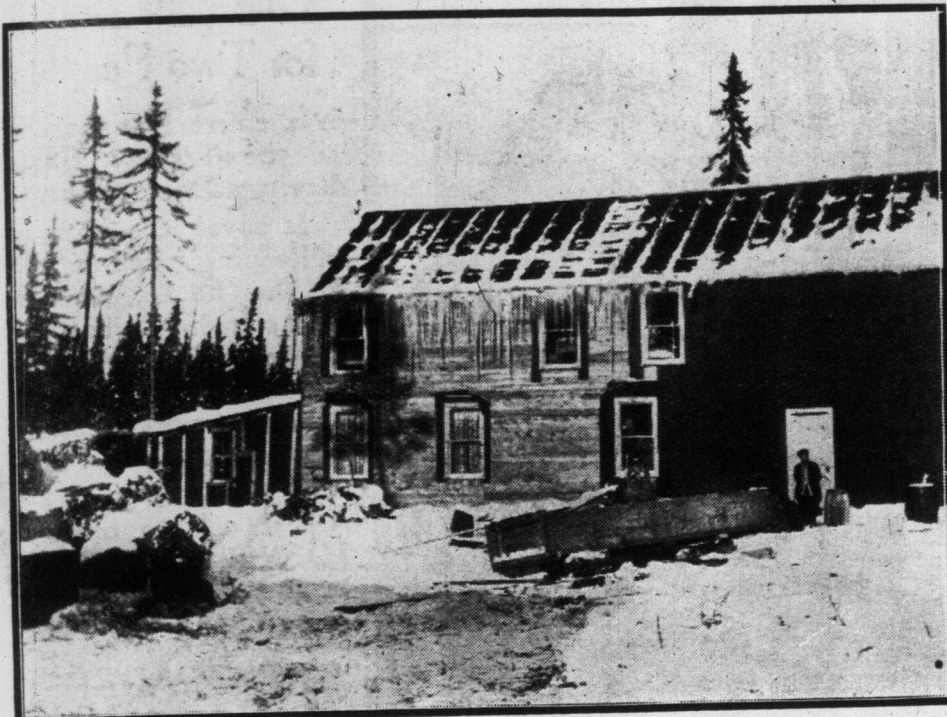


## Northern Ontario's New Land of Promise



Hammet and Company's stopping place at Kelso—"Mileage 222"



Regan's stopping place—"Mileage 222."



One of the first buildings at Kelso—"Mileage 222."



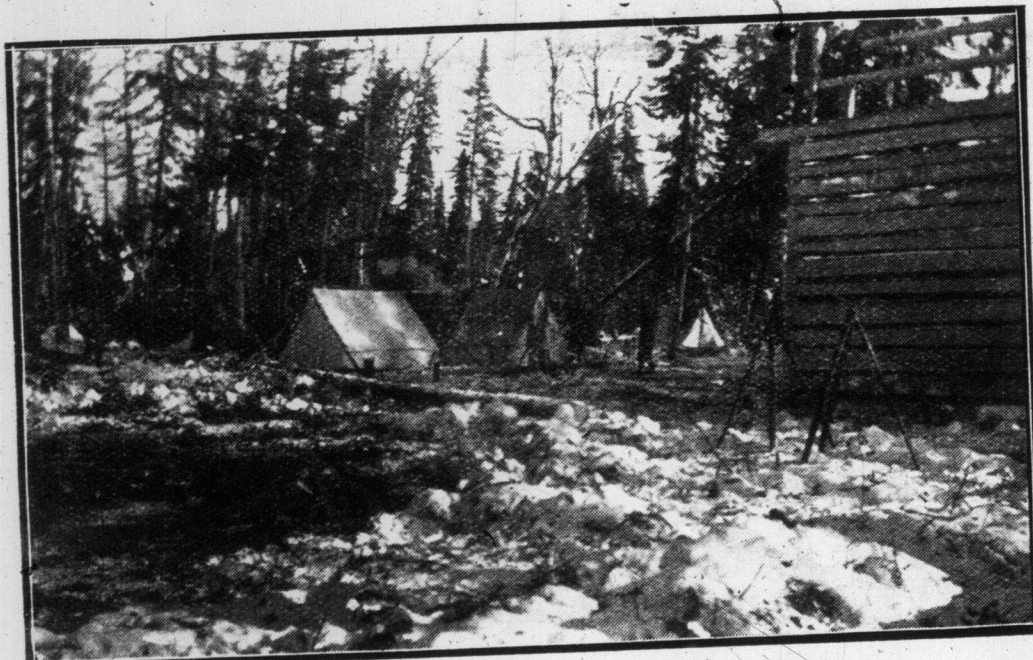
First stage load of passengers to arrive in Porcupine.



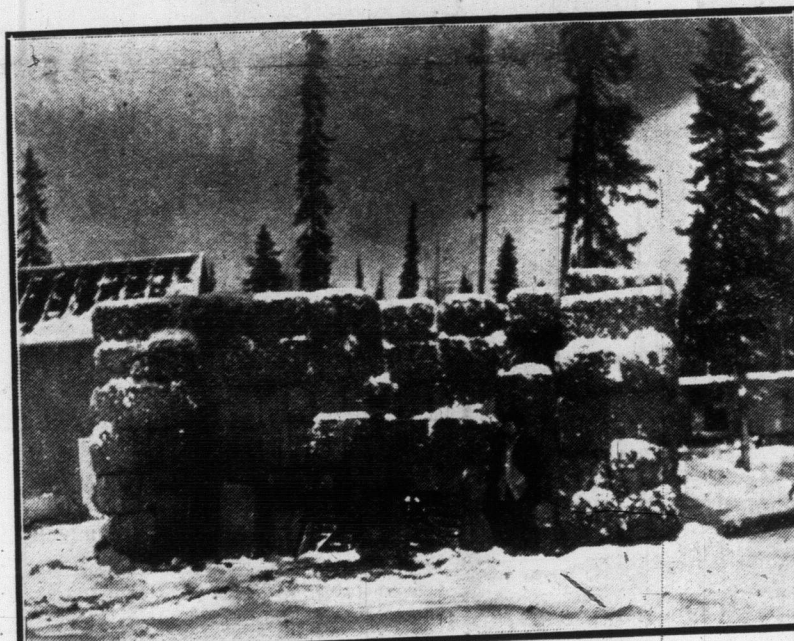
Where the horses rest their weary limbs—Stable in Kelso.



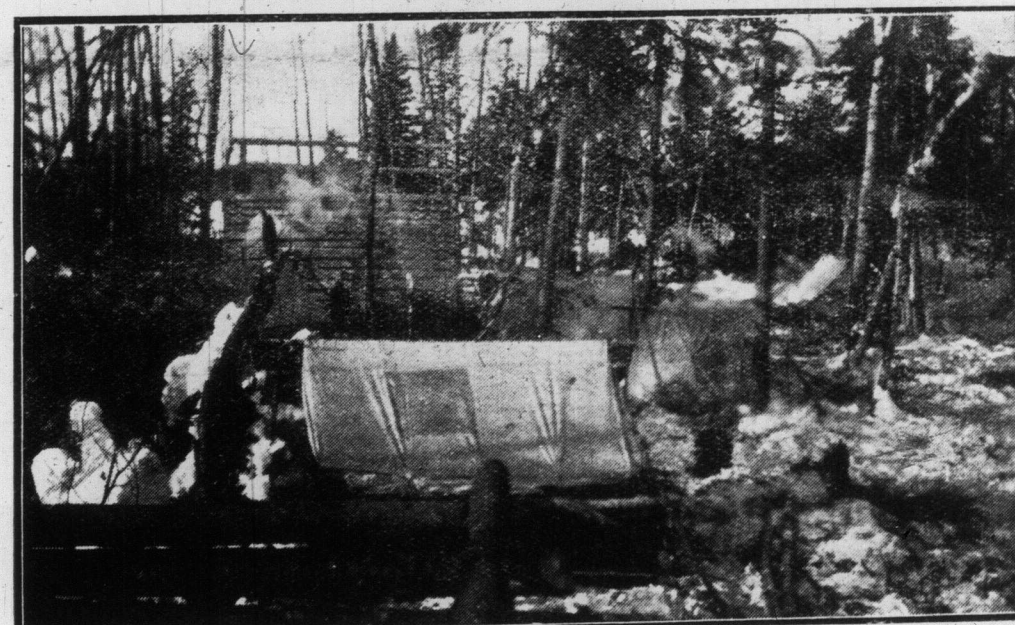
Party passing thru Porcupine on their way to camp.



Porcupine "city" as the visitor sees it to-day.



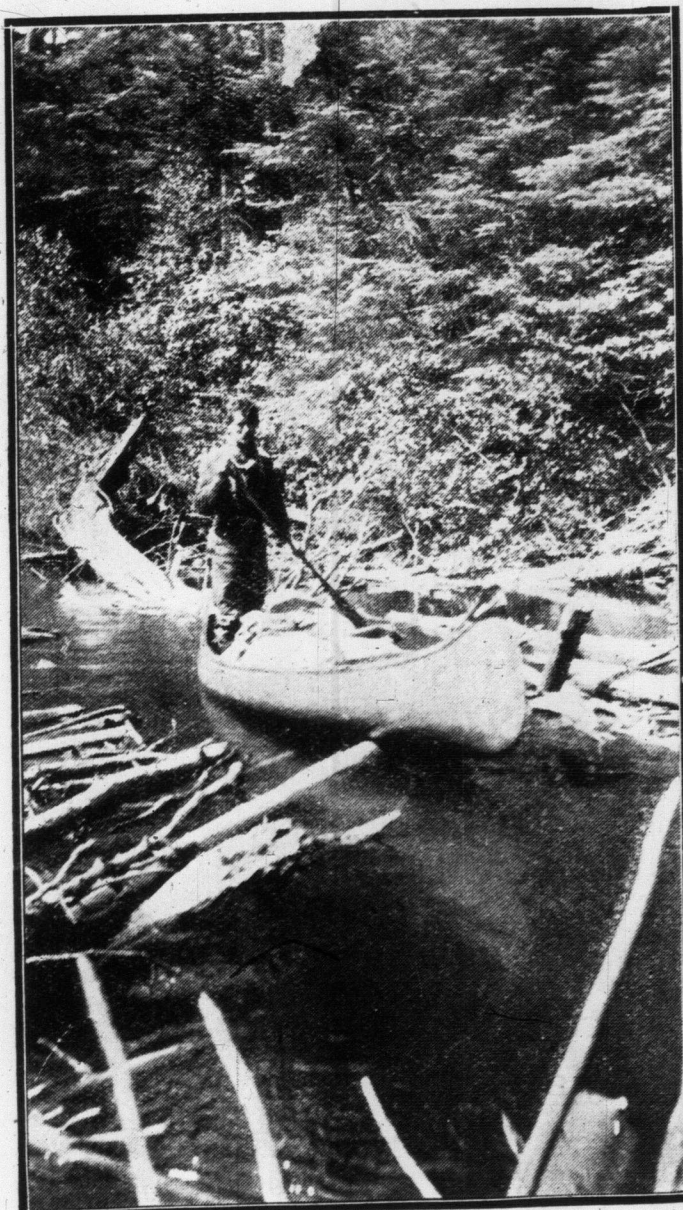
Two carloads of hay for the horses in gold region.



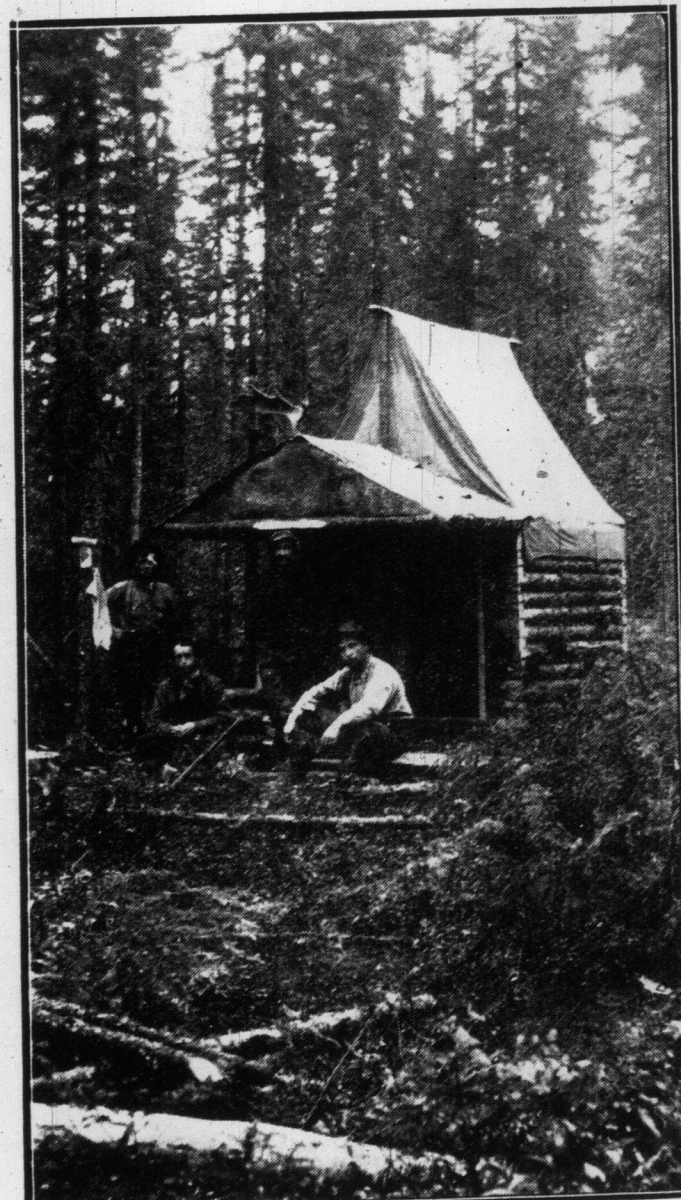
Another view of Porcupine as it is to-day.



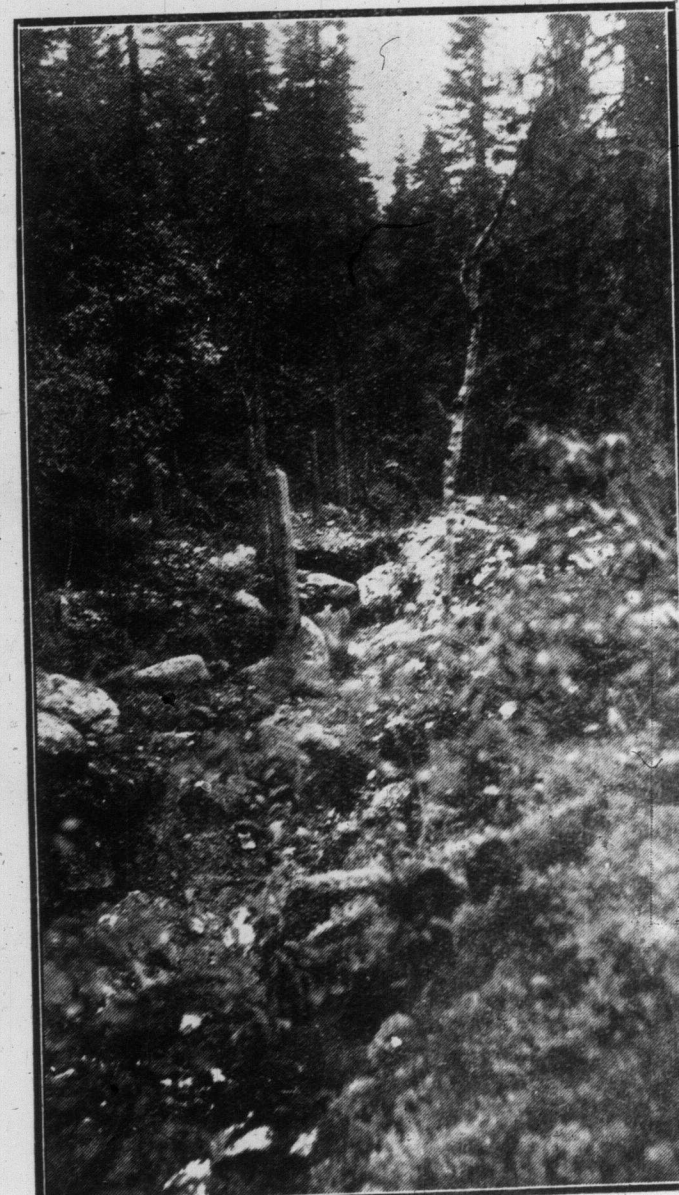
Porcupine woods in mid-winter.



Prospector on Slim Creek, near Frederickhouse River.



First building to be erected in Porcupine.



Point where first free gold was discovered.