

W. D. PETTIGREW & CO.

WHOLESALE

—DEALERS IN—

Plaster of Paris,
Plasterer's Hair,
Wheelbarrows

SEND FOR PRICES

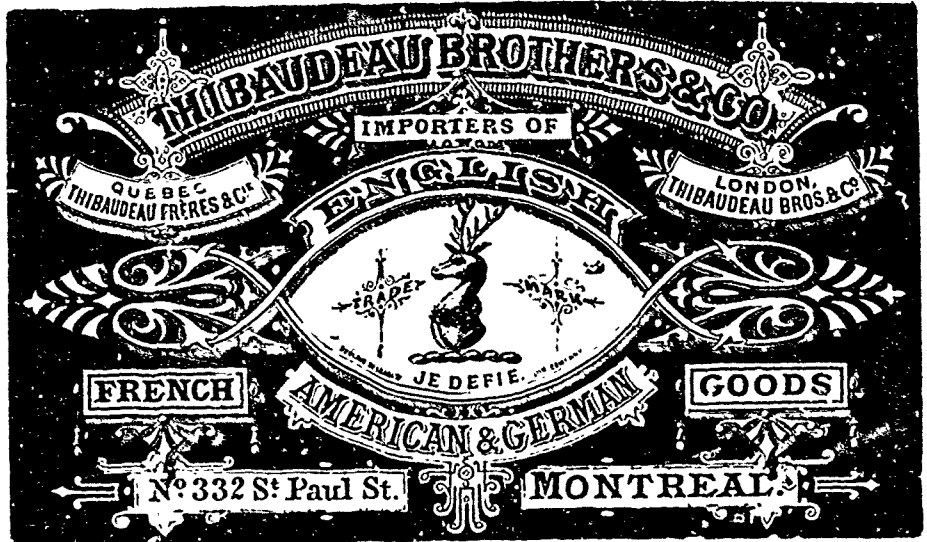
528 Main Street,
WINNIPEG.

STEWART HOUSE

COR. MAIN & ELLIS STS., MANITOULAN, MAN.

First Class in every respect! Re-fitted! Re-furnished
Good Table! Good Rooms! Three best Sample Rooms
in the Province.

ROUNTREE & CONNOR, Proprietors.

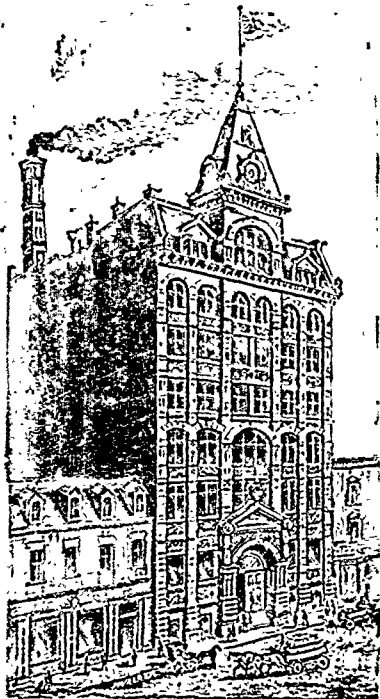


J. C. WILSON & CO.

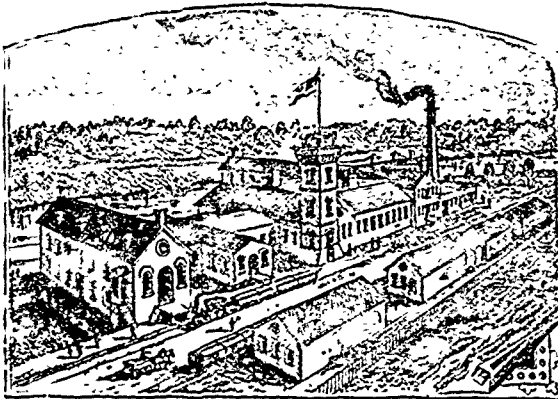
Fine Jute Manillas.

(Established 1870)

Rope Manillas.



HAWK ARE, RED EXPRESS, BROWN
UNBLEACHED MANILLAS, TISSUE MANILLAS.



Lachute Paper Mills, LACHUTE, P.Q.
(CAPACITY 7 TONS DAILY)

Paper Makers

MANUFACTURERS & PRINTERS
—OF—

Paper Bags, Flour Sacks,
Envelopes, Shipping Tags,
Toilet Paper and
Folding Paper Boxes.

—WHOLESALE—

MANUFACTURING STATIONERS.
Lithographing and Printing.

Our New Warehouse & Factory, Montreal
(60,000 Square Feet of Floor Room)

698, 700 and 702 Craig Street, **MONTREAL**

G. F. STEPHENS & CO.

—MANUFACTURERS OF—

Stephens' Pure Liquid Colors—Various Shades for Interior
and Exterior House Painting.

Stephens' Prepared Carriage Paints—In Scarlet, Black
and Maroon. These Paints dry with a Rich Gloss and do not
require Varnishing.

Stephens' Elastic Enamel—For Household Decorations such
as Tables, Fancy Chairs, &c., in a large number of delicate
shades.

Stephens' Pure Oxide Paints—(Almost everlasting)—For
Elevators, Granaries, Roofs and all Rough Surfaces exposed to
the Weather.

—IMPORTERS AND JOBBERS OF—

Window Glass—Ordinary Glazing and Crystal Sheet. Single
and Double Strength.

Heavy Polished Plate—Sizes in Stock from 44 to 96 inches
Wide.

Ornamental Glass—In almost Endless Variety.

**A full Stock of Painters' Supplies including Dry
Colors, White Lead, Varnish, Brushes, Etc.
Artists' Oil Colors and Brushes.**

**Plaster Paris, Plasterer's Hair, Portland Cement,
Rosin, Pitch, Etc.**

MARKET STREET EAST, WINNIPEG.