

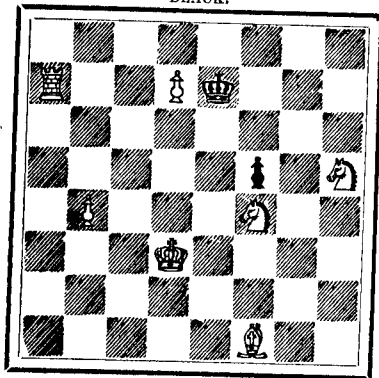
## CHESS.

## PROBLEM No. 291.

By G. E. BARBER.

From *Illustrated London News*.

BLACK.



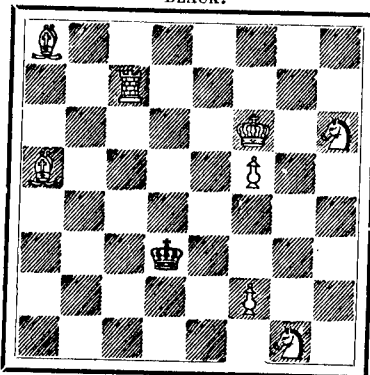
WHITE.

White to play and mate in three moves.

## PROBLEM No. 292.

From *Le Monde Illustré*.

BLACK.



WHITE.

White to play and mate in three moves.

## SOLUTIONS TO PROBLEMS.

No. 285.

- White. Black.  
 1. Kt-KR5 1. BxP  
 2. Q-K4+ 2. BxQ  
 3. Kt-B4 mate  
 If 1. R x P  
 2. K moves  
 2. Kt x P +  
 3. Q x R mate.  
 With other variations.

No. 286.

- White. Black.  
 1. Kt-K2 1. K-B2  
 2. Q-B2+ 2. K moves  
 3. Q mates  
 If 1. K-R2  
 2. K moves  
 2. Q-QR1  
 3. Q-KK7 mate.

GAME PLAYED AT THE TORONTO CHESS CLUB SEPT. 20th, 1888,  
 BETWEEN MR. FISHER, OF CLEVELAND, AND MR. DAVISON,  
 TORONTO.

MR. FISHER.

MR. DAVISON.

- White. Black.  
 1. P-KK 1. P-K4  
 2. B-B4 Kt-KB3  
 3. Q-K2 Kt-B3  
 4. P-QB3 P-Q4  
 5. P x P Kt x P  
 6. Kt-B3 (b) Kt-B5  
 7. Q-B1 P-K5  
 8. P-Q4 P-B3  
 9. B x Kt Q x B  
 10. K Kt-Q2 B-K2  
 11. Q-K2 B-B4  
 12. Kt-Kt3 B-Q2  
 13. Q Kt-Q2 P-QR3  
 14. Kt-KB1 Kt-R2  
 15. Kt-K3 (c) P-QKt4  
 16. Kt-Q5 Q-Q3  
 17. Kt x B Q x Kt  
 18. Castles QR P x B  
 19. Q x P B-Kt4  
 20. Q-Q5 Q-Kt4 +  
 21. K-Kt1 Kt-QB3  
 22. Kt-B5 R-Q1  
 23. Q-K6 + Kt-K2

MR. FISHER.

MR. DAVISON.

- White. Black.  
 24. P-QR4 R-Q3  
 25. Q-QKt3 B-Q2  
 26. Q-Kt8 + Kt-B1 (d)  
 27. Q x P Q-Q1 (e)  
 28. Q x Q+ K x Q  
 29. Kt-Kt7 + K-B2  
 30. Kt x R K x Kt  
 31. P-QKt3 Kt-Kt3  
 32. K-R-KB1 R-QKt  
 33. K-B2 Kt-Q4  
 34. QR-Kt1 P-Kt4  
 35. P-B3 P-K6  
 36. P-QB4 Kt-Kt5 +  
 37. K-B3 P-B5  
 38. P-Kt3 P-QR4  
 39. P x P P x P  
 40. R-KKt1 R-K1  
 41. R-Kt5 Kt-B3  
 42. R-R5 (f) R-KKt1  
 43. R-R4 (g) R-Kt7  
 44. R x B P (h) Kt-Kt5  
 45. P-B5 + K-Q4  
 And White resigns.

## NOTES.

- (a) Expecting Black to play B-B4.  
 (b) B x Kt is better.  
 (c) Overlooking the danger to his B.  
 (d) B-B1 is decidedly the best move.  
 (e) Q or K to K2 is better.  
 (f) Q R-K Kt1 best.  
 (g) R-K2 best.  
 (h) Overlooking the threatened mate.

A match between the veteran correspondence player of Toronto, Mr. A. Hood, and the Rev. W. Reiner, formerly of Amsterdam, Holland, but now of Barrie:—Mr. Hood, 12; Mr. Reiner, 8; Drawn, 3. Mr. Henry Creswicke was umpire. It is expected that Mr. Hood will now challenge the champion of Toronto.—*Columbia Chess Chronicle*.  
 Mr. Hood has played with some of the best players of Toronto, but not with much success. We have not heard of the challenge.

ALMA LADIES' COLLEGE, ST. THOMAS, ONT.—This institution which had last year the largest enrolment of all the Canadian Colleges for women is offering superior advantages to young women in Literary Course, Fine Arts, Commercial Science and Music at the very lowest rates. Address Principal Austin, B.D.

THE question of the superiority of light wines over alcoholic liquors has taken a strong hold upon the thinking public of the Dominion. Years ago it was contended that adulteration was the rule so far as foreign wines were concerned and that Canadian wines of good quality could never be produced in this country. For some years however connoisseurs have found that in the most southern portion of the Dominion—Peelee Island—very superior wines are produced—the Catawba especially as a dry wine is of a similar character to Sauterne or Still Hock, a very fine claret is also produced from the Virginia seedling grape. At the recent Industrial Exhibition, a very fine wine display was made by the well known wine firm, Messrs J. S. Hamilton & Co., of Brantford, the sole agent for the Peelee Island Vineyard; it was creditable alike to the firm and to Canada, and contained exhibits from the two large Vineyards of Peelee Island, the Peelee Island Wine Co., the Fairfield Plain Vineyard and the St. Malo Vineyards of Tilsonburg. That Messrs J. S. Hamilton & Co., extensive as their business capacity is, can control and place the wine produced by all these extensive Vineyards shows that Canadians have learned to appreciate good sound wines of Canadian production.

## BANFF SPRINGS HOTEL.

A perfectly constructed Summer and Winter Hotel, costing a quarter of a million dollars, situated on the line of the Canadian Pacific Railway, near the summit of the Rocky Mountains in the Canadian National Park.

The house is electric lighted and has every comfort and convenience found in city hotels of the highest grade. The numerous hot sulphur springs in close proximity vary in temperature from 80 to 121 degrees, and perfect bathing facilities are supplied. Testimony to the wonderful curative properties of the waters is plentiful. A first-class livery of driving and saddle horses forms part of the establishment, and there are excellent roads and walks in all directions, built and maintained by the Government. The house is 5,000 feet above sea level and is surrounded by magnificent mountain peaks 5,000 to 8,000 feet high. In grandeur of scenery and purity of atmosphere the region is immeasurably superior to any similar health resort on the continent. The hotel rates are from \$3.50 a day upward, and special terms for longer time may be had by addressing GEORGE HOLLIDAY, Manager, Banff, Alberta, Canada. For further information and for excursion tickets, apply to any Canadian Pacific Ry. Ticket Office, or at 110 King Street West, Toronto.



## SCIENCE (WEEKLY)

Reduced Price. Improved Form.

One subscription, 1 year, \$3.50.  
 Trial subscription, 4 mos., 1.00.

## CLUB RATES (in one remittance):

One subscription, one year,	\$3 50
Two do do	6 00
Three do do	8 00
Four do do	10 00

Every one interested in Sanitary, Mental, Educational or Political Science, should read SCIENCE. Special attention is given to Exploration and Travels, illustrated by maps made from the latest material by an assistant editor constantly employed on geographical matters.

## PRESS COMMENTS.

The value of this comprehensive scientific weekly to the student, the scientific worker, the manufacturer, and to the whole of that large and daily-growing class to which scientific knowledge is a necessity, can hardly be over-estimated. No student, business or professional man should be without it.—*Montreal Gazette*.

It is a scientific journal conducted with enterprise, impartiality and genuine ability.—*New York Tribune*.

We consider it the best educational journal published.—*Ottawa Globe*.

N. D. C. HODGES,

47 Lafayette Place, New York

## TO SUBSCRIBERS!

Those wishing to keep their copies of THE WEEK in good condition, and have them on hand for reference, should use a Binder. We can send by mail

## A STRONG PLAIN BINDER

For 75 Cents. Postage prepaid

These Binders have been made expressly for THE WEEK, and are of the best manufacture. The papers can be placed in the Binder week by week, thus keeping the file complete

Address—

OFFICE OF THE WEEK,  
 6 Jordan Street, Toronto.

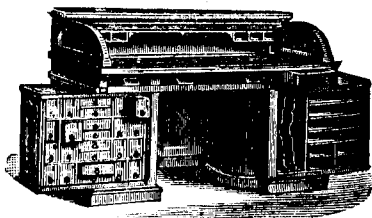
## W. STAHLSCHEIDT &amp; CO.

PRESTON, ONTARIO,

MANUFACTURERS OF

Office, School, Church and Lodge

FURNITURE.



Rotary Office Desk, No. 51.

SEND FOR CATALOGUE AND PRICE LIST.

## A WINTER IN SOUTHERN EUROPE

A party sails Dec. 29 for the South of FRANCE, ITALY, SICILY, and other delightful resorts. A Second Party for the EGYPT, HOLY LAND, GREECE, TURKEY, The NILE, and the chief countries and cities of Europe, sails same date. Send for Circular. E. TOURJEE, Franklin Sq., Boston.

## COLEMAN Business

NEWARK, N. J. Open all the year. Best course of Business Training. Best Facilities. Pleasantest Location. Lowest Rates. Shortest Time. Most Highly Recommended. Write for Catalogue and be convinced. H. COLEMAN, President.

## FRENCH, GERMAN, SPANISH, ITALIAN.

You can, by ten weeks' study, master either of these languages sufficiently for every-day and business conversation, by Dr. RICH. S. ROSENTHAL'S celebrated MEISTERSCHAFT SYSTEM. Terms \$5.00 for books of each language, with privilege of answers to all questions, and correction of exercises. Sample copy, Part I, 25 cents. Liberal terms to teachers. MEISTERSCHAFT PUBLISHING CO., BOSTON, MASS.

## THE STUDIO,

CLARENCE COOK, Managing Editor.

## CONTENTS.

Leaders on Current Art Topics—Reviews of Art Exhibitions—Notices of New Statues, Paintings, Important New Buildings and New Art Books—Notes on Art Matters and Archaeology at Home and Abroad—Announcements of Art Exhibitions, Meetings of Art Schools, etc., etc.—Reproductions of Important Paintings by the Azaline and Orthochromatic Methods, giving full colour values—And in general whatever can be of interest and invaluable to Artists, Amateurs, Teachers, Instructors, Connoisseurs, Patrons and Lovers of Art, Architects, Builders, Sculptors, Decorators and Furnishers, Collectors of Antiquities, Vases, Coins and Medals, Art Classes, Clubs, Schools, Colleges, Libraries and Museums, and to every one interested in the Fine Arts.

## Announcement Extraordinary.

Our having commissioned so distinguished an etcher as Rajon to etch a plate expressly for THE STUDIO, has created considerable comment and speculation as to the nature of the subject. The inquiries for information continue to pour in from all over the country and abroad. The interest shown in this distinguished artist's etching has been so widespread, and as the subject will be of such great importance, to create a sensation in this country and abroad when published, we have decided to print 500 India Proofs, before lettering, to be sold by subscription at \$5.00 each up to the day of publication, when the price will be increased. A magnificent work of art is promised. Copies of THE STUDIO, complete, with Rajon etching, 50 cents each. Books are now open to receive advance orders. Order now to secure one.

The price for single numbers of THE STUDIO complete, with all etchings, is 20 cents a copy, and can be supplied by all art, book, and newsdealers. Ask to see a copy. Address all communications to

THE STUDIO PUBLISHING CO.,  
 8 EAST 14TH ST. NEW YORK.

## NEW ENGLAND CONSERVATORY OF MUSIC, Boston, Mass.

The Largest and Best Equipped in the World—110 Instructors, 2523 Students last year. Thorough Instruction in Vocal and Instrumental Music, Piano and Organ Tuning, Fine Arts, Oratory, Literature, French, German and Italian Languages, English Branches, Gymnastics, etc. Tuition, \$5 to \$25; board and room, with steam heat and electric light, \$5 to \$7.50 per week. Fall Term begins Sept. 13, 1888. For illustrated Calendar, giving full information, address E. TOURJEE, Director, Franklin Square, Boston.