

FULL GOVERNMENT DEPOSIT
 Licensed Under
 "The Manitoba Insurance Act"
 Registered in
 The Northwest Territories

Agents Wanted
 In Districts where we
 Are not Already Represented

The Central Canada Insurance Co'y.

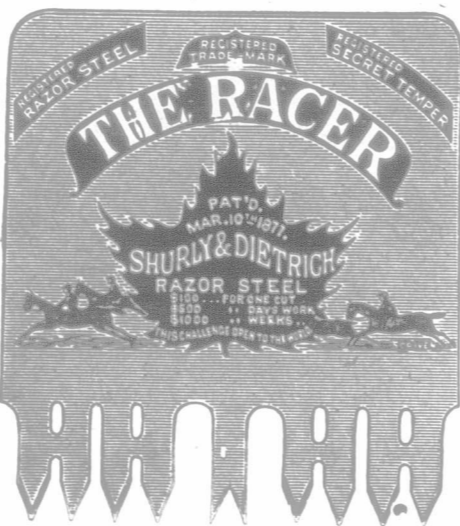
All Classes of Property
 Insured Against Loss from
 Fire or Lightning.

The only Company in Western Canada making
 a Specialty of Insuring Pure-bred Registered Live
 Stock Against Loss from Accident or Disease.

HEAD OFFICE: BRANDON, MAN. JOS. CORNELL, MANAGER.

THE RAZOR STEEL, SECRET TEMPER, CROSS-CUT SAW.

WE take pleasure in offering to the public a saw manufactured of the finest quality of steel, and a temper which toughens and refines the steel, gives a keener cutting edge and holds it longer than by any process known. A saw to cut fast "must hold a keen cutting edge." This secret process of temper is known and used only by ourselves. These saws are elliptic ground thin back, requiring less set than saws now made perfect taper from tooth to back. Now, we ask you, when you go to buy a Saw, to ask for the Maple Leaf, Razor Steel, Secret Temper Saw, and if you are told that some other Saw is as good, ask your merchant to let you take them both home, and try them, and keep the one you like best. Silver steel is no longer a guarantee of quality, as some of the poorest steel made is now branded silver steel. We have the sole right for the "Razor Steel" brand. It does not pay to buy a saw for one dollar less, and lose 25 cents per day in labor. Your Saw must hold a keen edge to do a large day's work. Thousands of these Saws are shipped to the United States and sold at a higher price than the best American Saws. Manufactured only by SHURLY & DIETRICH, GALT, ONT.



ADVERTISE IN THE ADVOCATE

HECLA FURNACES ARE FOUND **WHEREVER WINTERS ARE COLD**

We also make
**The Hillborn
 Wood Furnace
 Hot-Water
 Boiler
 Radiator and
 Register**

**Steel Ranges
 Cast Stoves
 Cook Stoves
 and
 Heaters**

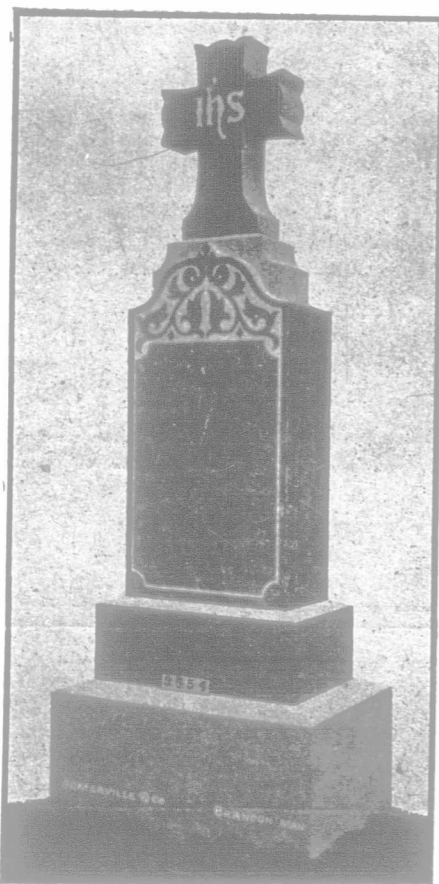
Send for a Booklet Describing the Only Furnace
 Made with **ABSOLUTELY TIGHT JOINTS**

CLARE BROS. & CO., Ltd. PRESTON & WINNIPEG

CLARE & BROCKEST,

Western Agents,
 246 Princess Street, WINNIPEG, MAN.

MONUMENTS



For prices and best work, write
**The Somerville Steam Marble
 & Granite Works.** - - Brandon
TOWN OF NANTON
 Southern Alberta, in the Line of C. P. R.

Daily service. Fifty-seven miles south of
 Calgary. If you want to buy Beautiful Town
 Site Lots, Cheap Farming Lands, and get
 in on the ground floor in the very best section,
 write to us promptly as the opportunities to get
 some of these choice lands are daily growing
 less. It will pay you to come and select for
 yourself. We will give you a square and honest
 deal, and place you on the road to success.
McPHEIL & McINTYRE.

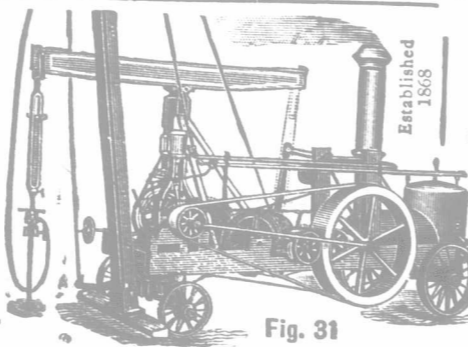
Benson & Houlton

Real Estate Agents
 and Builders

Norman Block
CALGARY, Alta.

We have for sale a number of improved farms, suitable for Fall
 Wheat, in the Calgary district. One of the best is a half-section,
 only four miles from the city, in a location that—for mixed farming
 —cannot be surpassed. 60 acres broken, good natural shelter for
 cattle. Prices, including implements and improvements,
\$20.00 Per Acre

YOUR INTERESTS AND OURS ARE IDENTICAL



You Want Practical
WELL DRILLING MACHINERY
 to develop that
Mineral, Oil or Water

proposition; we have it. Guaranteed
 it to work satisfactorily.
 Tell us about the formations, depth, diameter holes;
 will send printed matter and can save you money.

THE AMERICAN WELL WORKS,
 AURORA, ILL., U. S. A.
 CHICAGO, ILL. DALLAS, TEXAS.

R. SECORD, President. GEO. ROY, Vice-President. A. W. TAYLOR, Manager. BANKERS, Bank of Nova Scotia, Edmonton. P. P. HOLSON, Treasurer.

The Alberta Mutual Fire Insurance Co.
 Head Office: EDMONTON, N.-W. T.

The oldest Incorporated Farmers' Mutual in the Northwest Territories.
 Correspondence solicited. Agents in our present and future wanted.
FARMERS, INSURE IN A HOME INSTITUTION.

**The Riesberry Pump
 Co., Ltd.,**

MANUFACTURERS OF
High-Class Wood and Iron Pumps

We make only the best. Some of our Pumps
 have been in use twenty years, and are still
 working.
 Ask your dealer for Riesberry Pumps, or
 write direct to us.
BOX 544, BRANDON, MAN.
 Factory, corner of 6th St. & Pacific Ave.

**SELECT FARMS IN
 LOWER FRASER VALLEY**

British Columbia's richest farming
 district. I publish a real-estate bulletin,
 giving description and prices of
 some of the best farms in the Valley.
 Send for one (it will be of value to
 anyone interested in this country or
 looking for a chance to better their
 present conditions) to

T. R. PEARSON
 NEW WESTMINSTER - BRITISH COLUMBIA

Does Threshing Pay?

IT all depends on how frequently you have to STOP through using an inferior grade of OIL. All our supplies are of the best grade. Try them.

Threshers' Supply Co.
 Box 703. 120 Lombard St., Winnipeg.

TELEGRAPHY Book-keeping, Penmanship, Shorthand, Typewriting, and all business subjects thoroughly taught. Write for particulars. Catalogues free. Address WINNIPEG BUSINESS COLLEGE, cor. Portage Ave. and Fort St., Winnipeg.