



Synopsis of Canadian North-West Land Regulations

THE head of a family, or any male over 18 years old, may homestead a quarter-section of available Dominion land in Manitoba, Saskatchewan or Alberta. Applicant must appear in person at the Dominion Lands Agency or Sub-Agency for the District. Entry by proxy may be made at any Dominion Lands Agency (but not at Sub-Agency), on certain conditions.

Duties—Six months residence upon and cultivation of the land in each of three years. A homesteader may live within nine miles of his homestead on a farm of at least 80 acres, on certain conditions. A habitable house is required except where residence is performed in the vicinity.

In certain districts a homesteader in good standing may pre-empt a quarter-section alongside his homestead. Price \$3.00 per acre.

Duties—Six months residence in each of three years after earning homestead patent, also 50 acres extra cultivation. Pre-emption patent may be obtained as soon as homestead patent, on certain conditions.

A settler who has exhausted his homestead right may take a purchased homestead in certain districts. Price \$3.00 per acre. **Duties**—Must reside six months in each of three years, cultivate 50 acres and erect a house worth \$300.

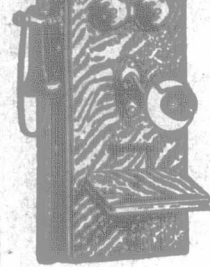
The area of cultivation is subject to reduction in case of rough, scrubby or stony land. Live stock may be substituted for cultivation under certain conditions.

W. W. CORY, C.M.G.,
Deputy of the Minister of the Interior.

N.B.—Unauthorized publication of this advertisement will not be paid for.—64388.

The Help Problem

In the farm is solved by the telephone. It enables the farmer to obtain help when it is needed, a very important necessity these days.



We have a very interesting bulletin "A Telephone on the Farm." It explains how every farming community can build and own its independent telephone system cheaply. It tells you how to get market and weather reports, the latest news, etc.

It will be sent free if you write for Bulletin No. 1011.

Stromberg-Carlson Telephone Manufacturing Co.
23 Richmond St. W., Toronto, Canada

RIDER AGENTS WANTED

everywhere to ride and exhibit a sample 1915 Hyslop Bicycle, with all latest improvements.

We ship on approval to any address in Canada, without any deposit, and allow 10 DAYS TRIAL. It will not cost you one cent if not satisfied after using bicycle to days.

DO NOT BUY a bicycle, pair of tires, lamp, or sundries at any price until you get our latest illustrated catalogue and learn all about our special proposition. The low prices will astonish you.

ONE CENT is all it will cost to write us a postal, and catalogue with full particulars will be sent to you **Free, Postpaid**, by return mail. **Do not wait.** Write it now.

HYSLOP BROTHERS, Limited
Dept. 2 TORONTO, Canada



Build Concrete Silos

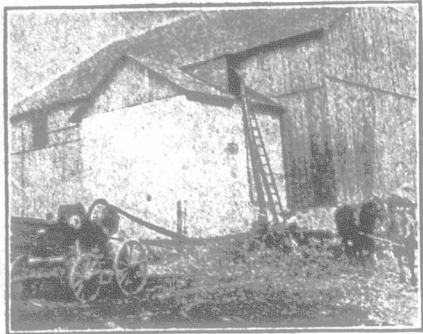
Any size with the London Adjustable Silo Curbs. Over 9,000 concrete silos built in Ontario with our Silo Curb. Send for Catalogue No. 10, London Concrete Machinery Co., Limited, Dept. B, London, Ontario. Largest Manufacturers of Concrete Machinery in Canada.

CUT THIS OUT

Farmer's Advocate Pen Coupon, Value 4c. Send this coupon with remittance of only \$1.52 direct to the Fleet Pen Co., 119 Fleet Street, London, England. In return you will receive by registered post, free, a splendid British-made 14ct. gold nibbed, self-filling, Fleet Fountain Pen, value \$4 (10s. 6d.). Further coupons, up to 13, will each count as 4c. off the price, so you may send 14 coupons and only \$1. Say whether you require a fine, medium or broad nib. This great offer is made to introduce the famous Fleet Pen to Canada. Over 100,000 have been sold in England.

Agents Wanted. Liberal Terms.

GILSON "GOES LIKE SIXTY" SILO FILLERS
SAVE TIME, POWER AND LABOR FILLING YOUR SILO



The Gilson Papec Pneumatic Ensilage Cutter is the one blower type of cutter that can be successfully operated with as little as a 4 or 6 h.-p. engine. Every owner of a Gilson Papec Cutter will back us up in this statement. Read these letters:

Gentlemen,—We have had our 6 h.-p. Gilson Engine nearly three years, and its remarkable power and economy is still a source of wonderment in this locality. We have been doing all our grinding, wood-sawing, etc., and last year we bought a Gilson 0-10 Ensilage Cutter. We filled our own silo, and a number of the neighbors. When we spoke of getting a cutter to fill a silo with a 6 h.-p. engine, the neighbors thought it could not be done. When we filled our 11'x30' silo in seven hours, however, the neighborhood traditions received a jolt. I am enclosing a photograph of my outfit. We can

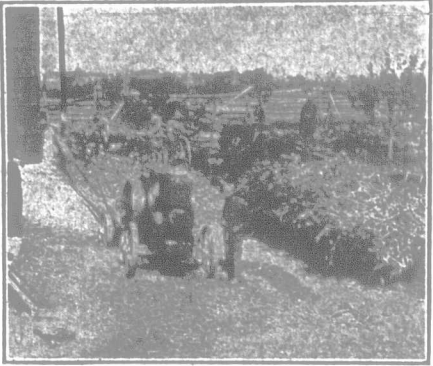
Darby Bros' Outfit heartily recommend the Gilson Engine or Cutting-box to the man who wants full value for his money. Yours truly, DARBY BROS., Rockwood.

Dear Sirs,—It gives me pleasure to inform you that the N-13 Papec Cutter with two knives that I bought from you has given me perfect satisfaction. I filled my own silo, 12'x32' (having a hip roof, which gives practically 6' more capacity), in 12 hours, and I filled another silo for a neighbor, 14'x28' in 18 hours. The cutter was run with a 12 h.-p. gasoline engine, which handled it with ease. It took four teams to keep the corn to the cutter. It is beyond all my expectations, and surprised the whole community. I recommend it to all prospective buyers.

W. F. CLARK, Wabash.

The Gilson Papec has been a revelation to thousands. Write to-day for catalogue describing the different sizes, and telling how you can save time and labor at silo-filling time.

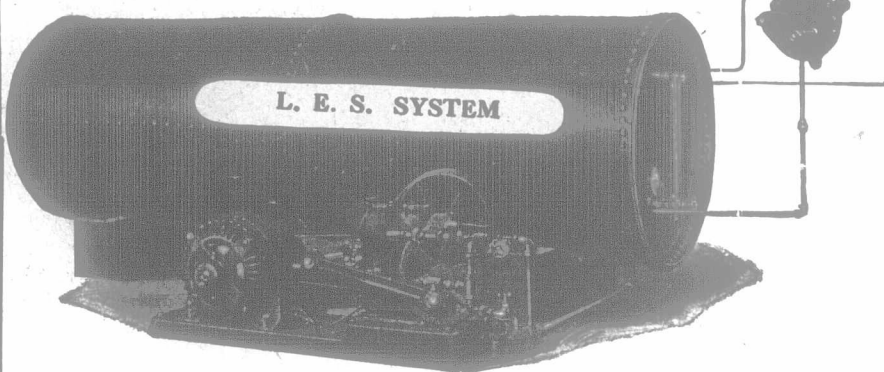
GILSON MFG. CO., Ltd., 19 York Street Guelph, Can.



Gilson Engine and Cutter Owned by F. C. Mollison, Guelph.

NOTICE!

Have you stopped to think of the comforts with the latest L.E.S. Compression Water Works System in your home?



Your Bathroom is not complete without it.

Write for information or call and see our showroom for inspection

London Engine Supplies Co., Limited
83-85 Dundas Street, London, Ontario

CANADIAN PACIFIC

Great Lakes Service
FIVE SAILINGS WEEKLY

Steamers leave Port McNicoll Mondays, Tuesdays, Wednesdays, Thursdays and Saturdays, for SAULT STE. MARIE, PORT ARTHUR and FORT WILLIAM.

Steamer "Manitoba" from Port McNicoll (Wednesdays) calls at Owen Sound 10:30 p.m. "STEAMSHIP EXPRESS" leaves Toronto 12:45 p.m. daily, except Friday, making direct connection with steamers at Port McNicoll on sailing days.

SUMMER TOURS TO PACIFIC COAST

Including "CALIFORNIA EXPOSITIONS"

Also to Atlantic Coast Resorts. Lake Massanoga (Bon Echo) Point-au-Baril. Muskoka Lakes. French and Pickering Rivers. Severn River. Kawartha Lakes. Rideau Lakes, Etc. **SUMMER TOURISTS' FARES NOW IN EFFECT.**

Fast Time — Convenient Train Service — Modern Equipment BETWEEN MONTREAL, OTTAWA, TORONTO, DETROIT, CHICAGO

CANADIAN PACIFIC WINNIPEG AND VANCOUVER NO CHANGE OF CARS OR DEPOTS

Particulars from J. H. Radcliffe, C. P. A., C. P. R., London, or write M. G. Murphy, D. P. A., Toronto.

When Writing Please Mention Advocate

"DOG DAYS" the best time to buy a DE LAVAL SEPARATOR

THERE was never before as good a time to buy a De Laval Cream Separator as **right now.**

The "Dog Days" are at hand when dairying is most difficult without a separator and when the increase in quantity and improvement in quality of cream and butter are greatest through the use of a good separator.

Then there is the great saving of time and labor, which counts for more in summer than at any other season and often alone saves the cost of the separator, aside from all its other advantages.

This is likewise the season when De Laval superiority counts for most over other separators,—in closer skimming, larger capacity, easier running, easier handling, easier cleaning and absolute sanitation.

A De Laval Cream Separator bought now will easily save its cost before the end of the year, and it may be bought for cash or on such liberal terms as to actually pay for itself.

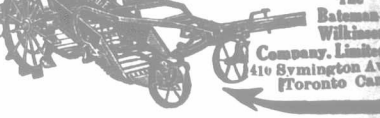
De Laval Dairy Supply Co., Ltd.
MONTREAL WINNIPEG
PETERBORO VANCOUVER

DIGGERS

for potatoes. All growers know that it pays to use diggers even on five acres—they save valuable time, save all the crop in good condition, at less expense.

IRON AGE DIGGERS

Wheels 32 or 38 ins. Elevator, 22 or 30 ins. wide. Thorough separation without injury to the crop. Best two wheel horse truck. Right adjustment of plow, shifts in gear from the seat. Can be backed, turns short into next row. We guarantee our diggers to do the work claimed for them. Ask your dealer about them and write for booklet.



The **Balmain-Williams Company, Limited**
410 Bymington Ave. Toronto Can.

CHALLENGE COLLARS

Acknowledged to be the finest creation of Water-proof Collars ever made. Ask to see and buy no other. All stores or direct for 25c.

THE ARLINGTON CO. of Canada, Ltd.
66 FRAZER AVENUE TORONTO

All "ARLINGTON COLLARS" are good, but our **CHALLENGE BRAND** is the best

Powerful—Economical

Ellis Engines develop more power on cheap coal oil than other engines do on gasoline. No cranking, no excessive weight, no carbonizing, less vibration, easy to operate. All

ELLIS ENGINES

are sent on 30 days' free trial and guaranteed for 10 years. We do this because we know that Ellis Engines are the biggest value the engine industry has ever known. Thousands of enthusiastic users. Made in vertical and horizontal types, either stationary or portable, from 1 1/2 H. P. to 18 H. P. Our new booklet describes this money-saver. Send for copy. **ELLIS ENGINE COMPANY**
2855 E. Grand Boulevard, Detroit, Mich.

FARM LOANS

Money to loan (First Mortgage) on improved Ontario farms, at lowest current rates. **A.L. MASSEY & CO.**
DOMINION BANK BLDG., TORONTO.