

hose for city were last week awarded as follows: W. H. Thorne & Co., 500 feet of Surprise brand at 80 cents per foot; J. J. Barry, 500 feet of Double Jacket at 90 cts.

WATERLOO, ONT.—The contract for excavating and concrete work for five new bridges to be built this season has been given to George Bulmer, of Elmira, at \$5.20 per cub. yard for footings and \$5.15 for abutments.

BID.

LONDON, ONT.—Three tenders were received for construction of pavement on

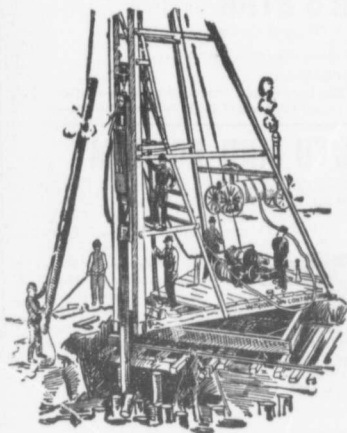
Queen street, as follows: Ontario Asphalt Block Pavement Company, \$2.45 per square yard for 3 inch and \$2.70 for 4 inch; Forest City Paving Company, \$2.18 per square yard for brick pavement with concrete base, and \$1.95 for pavement with broken stone base; Warren Asphalt Pavement Company, \$2.18 per yard for bitulithic pavement with a ten year guarantee. No award has as yet been made.

The H. A. Clemes Company, Limited, Guelph, Ont., has been incorporated,

with a capital of \$50,000, to do a general contracting business.

The agreement between the brick manufacturers of Victoria, B.C., to maintain a uniform rate of \$8.50 per thousand, is said to have collapsed and a decline in the price of brick is expected.

The statement presented at a meeting of creditors of George Wilson & Co., contractors and lumber dealers, St. Catharines, Ont., shows nominal assets of \$85,000, secured liabilities \$70,957.56 and unsecured liabilities \$28,572.29.



PILE DRIVING

on land or water by Steam Pile Drivers or Drop Hammers.

**Portable Boilers
Hoisting Engines
Pumping Machinery**

TO LET

Bridge Building, Trestle Work, Wharves, Dams, Diving Submarine Work and General Contracting.

WM. HOOD & SON

10 Richmond Sq. - MONTREAL

DEBENTURES

Municipalities contemplating the issue of Debentures will find it to their advantage to communicate with

G. A. STIMSON & CO.

Investment Dealers

24 and 26 King St. W. - TORONTO

THE DELANO-OSBORN ENGINEERING CO., LIMITED

MANNING CHAMBERS, TORONTO

**CONSULTING CIVIL, MECHANICAL AND
ELECTRICAL ENGINEERS.**

Pittsburgh Testing Laboratory, LIMITED

Inspecting and Metallurgical
Engineers and Chemists

SPECIALTIES: Inspection of RAILS and all material for BRIDGES, BUILDINGS, and other structures, cast iron pipe, wood and steel railroad cars.

MANUFACTURE AND ERECTION. Expert examination and reports, chemical analyses and physical tests of all kinds. Cement Testing.

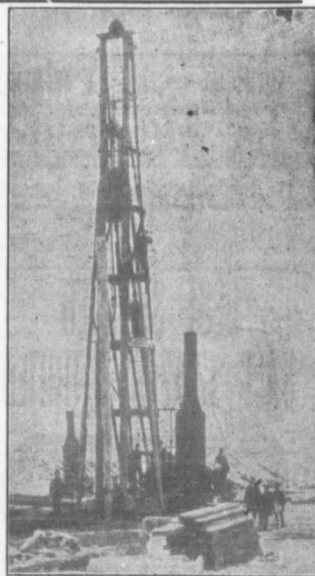
146 St. James Street, - Montreal, P.Q.

ALFRED J. STEVENS

Temple Building, TORONTO.

**Engines, Steel Plate Fans,
Conveying Machinery,
Rock Crushers.**

Please mention this paper when corresponding with advertisers.



PILE DRIVING

and Foundation Work.

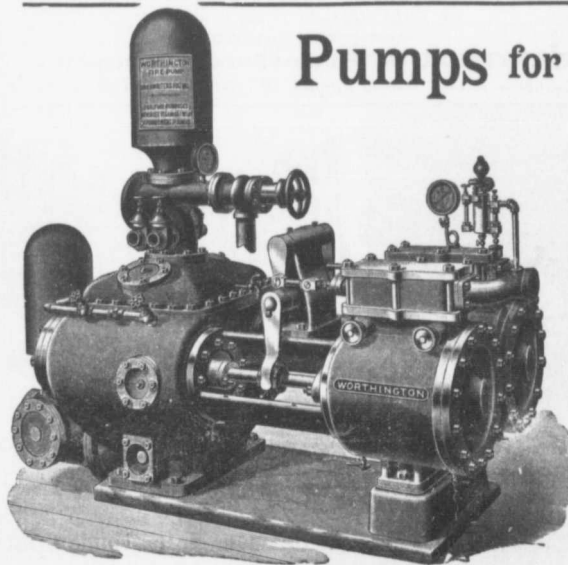
By 5-ton Automatic Steam Pile Hammer, Water Jet or Drop Hammers, Dock Building, Submarine Work and Dredging.

BUILDING MOVER AND WRECKER

General Contracting.

JNO. E. RUSSELL, - Toronto

908 Queen St. E.—Phone M. 2007.



Pumps for Waterworks

**Waterworks Systems
Installed**

*Steam, Hydraulic, Electric,
Gasoline, Air Lift and
Automatic Rams.*

**Steam Boilers and
Filters**

Write for Prices and Particulars

The John McDougall

CALEDONIAN IRON WORKS CO., LIMITED

MONTREAL, P.Q.