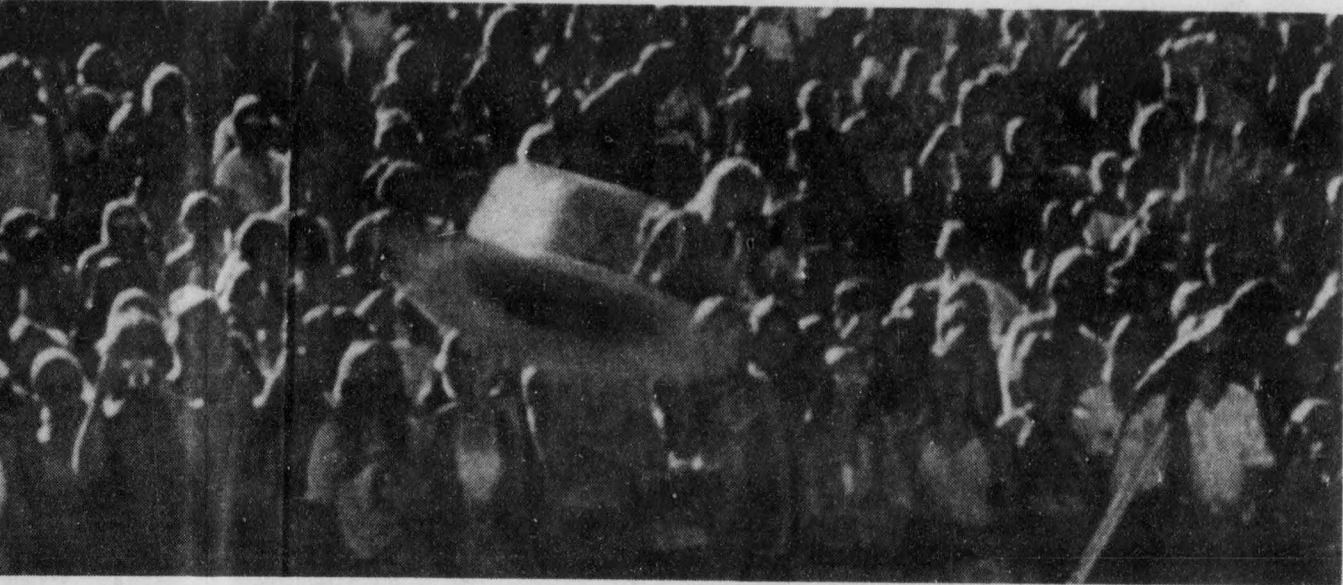


ests:

# Village Queers ••••• April Beer



Thousands of students attended Extravaganza

seemed to listen intently to the music. April Beer played songs such as, Gimme Love, Just Like That, Weeping Widow, Electric Jewels.

Those macho boys, characterized by their varied costumes and unique movements, The Village Queers, gave enthusiasm to Fredericton disco fans and especially the students of UNB. Just when everybody had said disco music had become unpopular, The Village Queers had its audience thrilled. They waved their arms in the air while their bodies bounced to the beat of tunes such as: In the Navy, Macho Man, and YMCA. The ballroom of the SUB was the place to BOOGIE Wednesday at Extravaganza. Laggars estimated that The Village Queers entertained a crowd of about 3,000.

Even with this mass of people, the Campus Police maintained control over the high-spirited disco scene. However, a Bumswickan reporter noticed that a girl attempted to rip the clothes off one of the members of the Village Queers. When this unidentified girl was asked why she did it, she said, "I was so excited that I didn't know what I was doing. I just love the Village Queers."

The Bumswickan also took a survey to find the general opinion of the performance. Chilbie Wilbie, the Winter Carnival mascot, summed this up nicely saying, "The Village Queers are an excellent group."

Due to the mass attendance of students for extravaganza, Laggars believes, "apathy among students no longer exists." She says, "Just give them the entertainment that they want and they will support any event for Winter Carnival."

With profits close to \$1 million Laggars said, "The student union will be presented with a cheque for half of the money, and I plan to invest the rest in a new home in Florida and quit university."

She also adds, the staff of the Winter Carnival will have their party, March 18 (BYOB). She would like to thank her staff for all their help and cooperation.



April Beer in live performance



The Village Queers