

## McGoun debaters battle ubc; con hall tonight

By Gordon Walker

Apparently it's debatable whether "World Government is the Ultimate Solution for World Peace" because that is the topic of this year's McGoun Cup Debates.

U of A students will be able to see their own Dave Cooke and Hal Veale uphold the affirmative in the debate against two University of BC contenders. The debate will be in Con Hall at 8 p.m. tonight. It will be free.

The judges will be Dr. D. B. Scott, professor of physics; John Bracco, Edmonton lawyer; and Mrs. S. E. Forbes, trustee of the Edmonton School Board.

The other half of the Alberta team, Tom Wood, Arts 3, and Bob Jarvis, Law 2, travel to Manitoba to take the negative against two University of Manitoba debaters.

### OLD PROS

Both Dave Cooke and Hal Veale have debated in the Huggill Cup Debates.

Cooke, Law 3, is a member of the campus Liberal Club and will sit in this year's Model Parliament. He is also a member of the Debating Society.

Hal Veale, Law 3, was on the winning Huggill debating team in 1959-60. Veale is a member of the Gold Key Society. He ran for Students' Union president in 1960-61.

Bob Jarvis shared honors with the U of A debaters when they won the McGoun Cup in 1959-60. Jarvis was coordinator of the 1960-61 Model Parliament and is a member of the campus Progressive Conservative Club.

### LONE ARTSMAN

Tom Wood is the only artsman on the team. His home town is Raymond, Alberta.

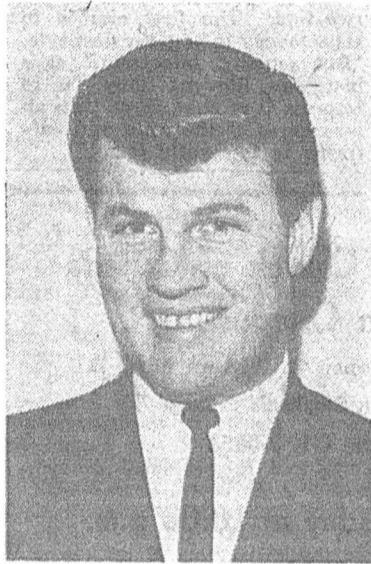
If the Alberta debaters win both their debates they will receive a total of 8 points. Each winning team receives one point for the win plus a point from each of the three judges.

Each debater is given a score of 50 for his argument, 30 for his presentation, and 20 for his rebuttal. Each main argument is allotted 20 minutes while rebuttals last 5 minutes.

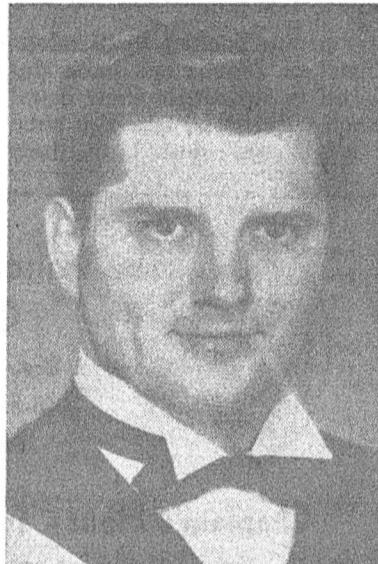
### HEAD EAST

Winner's of Friday's debate will go to Eastern Canada later this year to compete in the NFCUS debating finals.

The supervisory work behind this year's McGoun debates is being handled by Anton Melnyk of the U of A Debating Society.



DAVE COOKE



BOB JARVIS



TOM WOOD



HAL VEALE

## Engineers ready queen week

By Jon Petursson

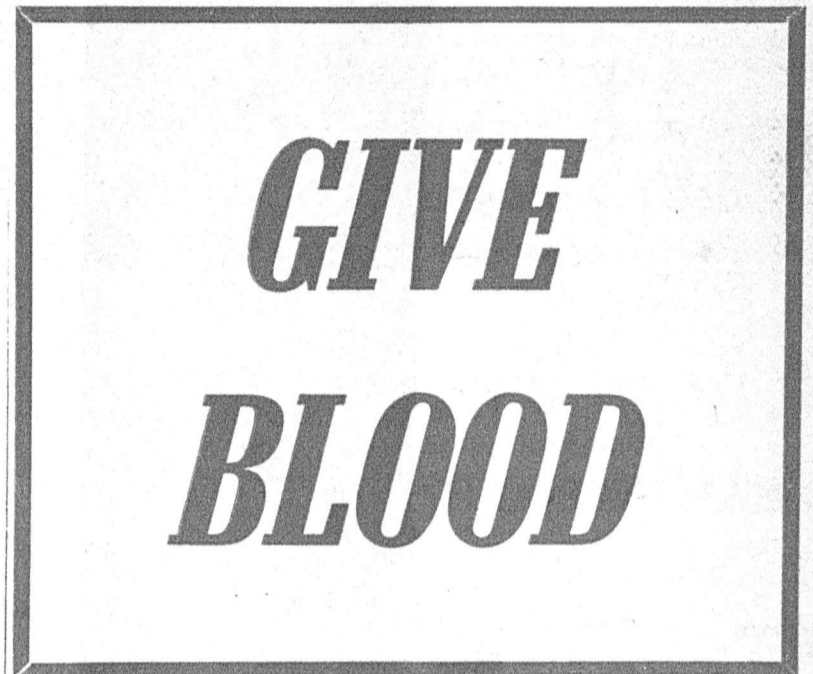
The engineers are feverishly making last minute preparations for the expected onslaught from their archrivals, the artsmen, as the commencement of the 24th annual Queen Week draws near. The tank in the hydraulics lab is full of black cold water, the stocks stand by, ready to receive their victims and the dye pots are at hand ready for instant use.

This year warns ESS president Moe Lamothe, offending artsmen will have their features brightened with international red.

Queen Week was conceived in

1944 as an added attraction to the engineers' ball which was then six years old. Since its

(Continued on page 6)



**BLOOD DRIVE HERE**—Above is a Gateway economy-model picture (i.e. no picture), dedicated to the memory of all those who voted "no" in Wednesday's Gateway referendum. The blood drive will be held in Wauneita Lounge of SUB Jan 30-Feb. 2, and Feb. 13-16. Ralph Bat, the world's laziest vampire, has been named mascot for the drive. In return, he will receive a percentage of the take. "I won't have to work that lousy midnight shift anymore," said Ralph.

## Bleed your pint

Lepers should feel free to participate in the University of Alberta's annual blood drive, Jack Yasayko, Council's medicine man reported this week.

The drive is held annually to raise blood for the Canadian Red Cross. Last year U of A students donated about 2,200 pints.

Two donor clinics are scheduled. The first will run from Tuesday, Jan. 30, to Friday, Feb. 2; the second from Tuesday, Feb. 13, to Friday, Feb. 16. The clinic will be open from 9:30 a.m. to 1:30 p.m. and 2:30 p.m. to 6:30 p.m. daily.

The University of Alberta at Calgary has been challenged to bleed more on a per capita basis than Edmonton students. We have accepted this challenge, Yasayko noted.

Several inter-faculty competitions will also be conducted. A scoreboard will be erected between the

Rutherford Library and the Arts Building to tally the bloodiest faculties.

Students who have or have had jaundice, malaria or rare blood diseases cannot donate blood but should register in order to be recorded in their faculty competitions.

Students with rare blood types, however, are particularly encouraged to donate a pint. Also welcome are lepers, and those who have been cured of anthrax.

The university faculty and staff are being invited to participate in the drive his year. This is the first time that professional blood has been solicited.

Margaret R. Shandro, Students' Union Vice-President, has warned that it is inadvisable to bleed immediately after eating. "It clogs up the needles," she said. Individual chicken pie is particularly harmful in this regard.

## SUB expansion YES . . .

By "Stop the Press" Schepanovich

A Students' Union Building Expansion fee hike of \$5.00 was approved and a Gateway proposal for an additional \$1.35 was rejected at the polls Wednesday.

Some 2,507 students voted on the SUB Expansion referendum, with 2,023 voting "yes," 475 voting "no," and 27 ballots spoiled. On the Gateway referendum, a total of 2,703 students acted at the polls. Voting "yes" were 1,673 students, with 992 voting "no." Thirty-eight ballots were spoiled.

Percentage-wise, 80.9% of the pollsters voted "yes" for the SUB expansion hike in fees. For the Gateway increase 62.8% of the voters said "yes." A two-third majority at the polls was necessary for passage of each money referendum because of the Students' Union constitution. Thus the SUB measure passed and the proposed Gateway increase failed.

The numerical discrepancy is due to the fact that nurses were allowed to vote only on The Gateway's referendum.

Passage of the building referendum now permits the SUB expansion planning committee to continue with its plans. Failure of the Gateway referendum means the paper will have to run fewer issues, and cut down features and coverage of student activities.

### HYNDMAN COMMENTS

Commenting on the results of the two referendums, Students' Union President Peter Hyndman said "I am naturally delighted with the re-

sults of the building expansion referendum and feel the student body deserving of credit for their responsibility and foresight. However," he said, "I would have preferred to see both questions given the required support since an improved financial base for The Gateway would mean greater future scope for their operations and a greater flexibility of the Students' Union budget for non-Gateway purposes."

Hyndman stated "thanks are due to all those who took part in preparing for and running the election. A very large debt of gratitude is owed the building expansion committee, the administration and the provincial government for the assistance provided with regard to the successful passage of the building referendum."

"It is to be noted that a majority of students supported The Gateway fee increase, al-

though not the required two-thirds. I would hope that The Gateway staff will continue their enthusiastic approach to their duties and I would hope another Gateway referendum would be held as early as possible next fall," Hyndman said.

He said the "close to 3,000 who voted are to be thanked for their interest in student government."

### JENKINS COMMENTS

"I'm bitter, twisted and disillusioned," stated Gateway Editor Davy Jenkins, when asked for comment on the referendum results.

"It's all our fault, too," he added. "The Students' Council was out speaking for and plugging its referendum. We just sat back and waited, except for one or two little speeches. We missed the boat. We're pretty stupid."

"The Gateway is going to have to

struggle. Maybe we can sell cookies."

Students' Union Secretary Treasurer Gerry Harle told The Gateway "a little more than a third of the student body voted. This is a very poor showing for a very important issue." He said "it shows that two thirds of the students have little interest where their fees go."

The five-dollar fee hike will have to be approved by the Board of Governors before it is incorporated into the fee structure.

	SUB Referendum		Gateway Referendum	
	Yes	No	Yes	No
Arts & Science	344	87	293	147
Agriculture	142	42	103	81
Education	240	37	192	84
Engineering	251	83	171	161
Medical	284	88	205	168
Math-Physics	374	85	316	146
Nurses Resl.			81	80
Students' Union	388	53	312	125
<b>TOTAL</b>	<b>2,023</b>	<b>475</b>	<b>1,673</b>	<b>992</b>