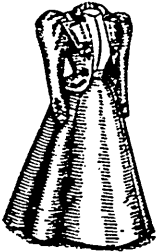


9081



9081

Ladies' Evening Costume, having a Straight Full Skirt Over a Five-Gored Foundation Skirt. (To be Made with Either of Both Skirts and With or Without the Boleros): 9 sizes. Bust measures, 30 to 40 inches. Any size, 1s. 8d. or 40 cents.



9104



9104

Ladies' Two-Piece Costume, Consisting of a Jacket or Blazer and a Seven-Gored Skirt: 8 sizes. Bust measures, 30 to 44 inches. Any size, 1s. 8d. or 40 cents.



9096



9096

Ladies' Costume, having an Eight-Gored Skirt: 11 sizes. Bust measures, 30 to 44 inches. Any size, 1s. 8d. or 40 cents.



9251



9251

Misses' Two-Piece Costume, Consisting of an Eton Jacket (That may be Worn Open or Closed Over a Waist or Vest), and a Five-Gored Skirt with Fan Back: 7 sizes. Ages, 10 to 16 years. Any size, 1s. 6d. or 35 cents.



9182



9182

Misses' Costume, with Four-Gored Skirt: 6 sizes. Ages, 12 to 16 years. Any size, 1s. 6d. or 35 cents.



9125



9125

Misses' Costume, having a Four-Gored Skirt: 6 sizes. Ages, 12 to 16 years. Any size, 1s. 6d. or 35 cents.



9132



9132

Misses' Costume, having a Four-Gored Skirt: 6 sizes. Ages, 12 to 16 years. Any size, 1s. 6d. or 35 cents.



SEE THAT LINE

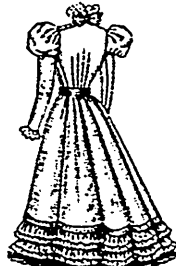
It's the wash, out early, done quickly, cleanly, white.

Pure Soap did it
SURPRISE SOAP
with power to clean without too hard rubbing, without injury to fabrics.

SURPRISE
is the name, don't forget it.



9126



9126

Ladies' Costume, Consisting of a Six-Gored Skirt, and a Waist that may be Made With or Without Fitted Body-Lining: 10 sizes. Bust measures, 30 to 42 inches. Any size, 1s. 8d. or 40 cents.



9089



9089

Ladies' Costume, with Seven-Gored Skirt: 12 sizes. Bust measures, 30 to 46 inches. Any size, 1s. 8d. or 40 cents.



9090



9090

Ladies' Costume, with Eight-Gored Skirt (To be Made with Full-Length or Three-Quarter Length Sleeves): 11 sizes. Bust measures, 30 to 44 inches. Any size, 1s. 8d. or 40 cents.



9093



9093

Ladies' Costume (Closed at the Left Side), with Seven-Gored Skirt: 10 sizes. Bust measures, 30 to 42 inches. Any size, 1s. 8d. or 40 cents.