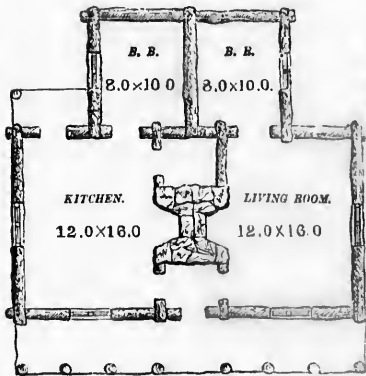


Such cottages, when painted white outside, with porch and outside blinds painted green, look exceedingly neat and clean-looking. The cost of such cottages ranges from \$300 (£60



No. 5.—GROUND PLAN FOR LOG HOUSE.

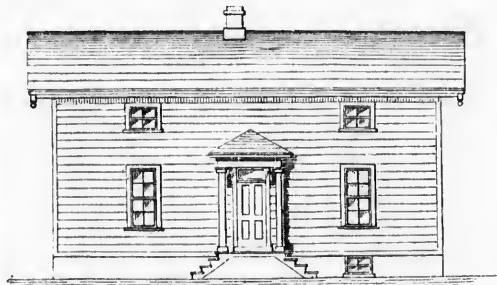


No. 6.—A WESTERN COTTAGE.

stg.) to \$600 (£120 stg.), all depending upon the size and number of rooms, where and how the lumber has been bought, and how much paint is used. This style of house is very

general about many of the country towns.

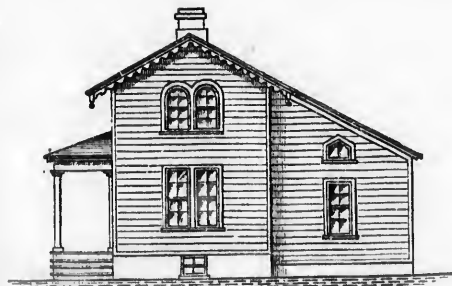
The farmer who is pretty well off, erects a still larger and different style of house, and as affording an idea of such, as well as of a style of country house in very general use by private families as well as by farmers, we give the following illustrations—No. 7 of front elevation, No. 8 end view, with ground plans,



No. 7.—COUNTRY RESIDENCE OR FARM HOUSE.

Nos. 9, 10 and 11. Regarding such style of houses, the author of "The Garden," and "The Farm," says:

"This design is simple, and requires little explanation. A cellar under a part of the house, as shown, will be found sufficient. It is made easy of access from the kitchen, and should an outside entrance be required, it may be had at a small additional expense. The first story has a main and



No. 8.—END VIEW OF HOUSE No. 7.