

## SPECIALIZATION

PORTAGE TRADE DEVELOPMENT exports products manufactured by companies of The Heritage Group Inc. which specialize in high quality processed meat products, fresh meat, portion control meat, cheese, cheese slices, frozen pastry products and frozen entrees.

## THE COMPANY

Portage Trade Development is a division of The Heritage Group Inc., located in Waterloo, Ontario, Canada, responsible for export sales of products manufactured by the following subsidiaries:

J.M. Schneider, Inc.,

Kitchener, Ontario.

F.G. Bradley, Inc.,

Toronto, Ontario

National Consolidated Food Brands

Waterloo, Ontario.

The manufacturing divisions for which Portage Trade Development is the export sales arm, are manufacturers of high quality retail and food service brands. The Schneider and F.G. Bradley brands are household words in Canada and many of its export markets. The Schneider brand of retail meat products is also manufactured under licence in Bridgetown, Barbados for distribution in the Caribbean.

## PRODUCTS

Fresh, processed and portion controlled meats, poultry, cheese, cheese slices, frozen pastry items, and frozen entrees.

## INTERNATIONAL EXPERIENCE

The Heritage Group Inc. has been exporting for many years through their wholly owned subsidiaries to England, Japan, Bermuda, the Caribbean, Germany and the United States.

Portage Trade Development was set up as a separate and wholly owned division of The Heritage Group Inc. in 1982 to specialize in export marketing and sales of its products.

## INFORMATION

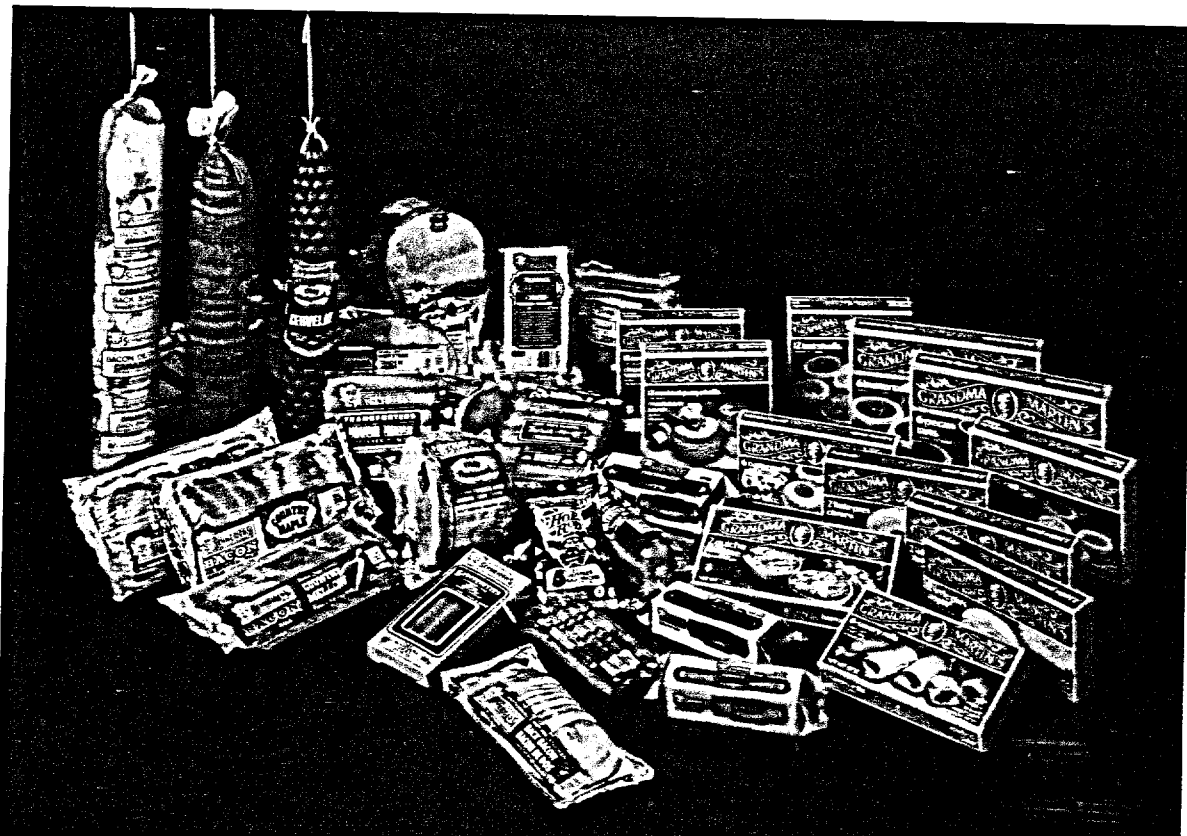
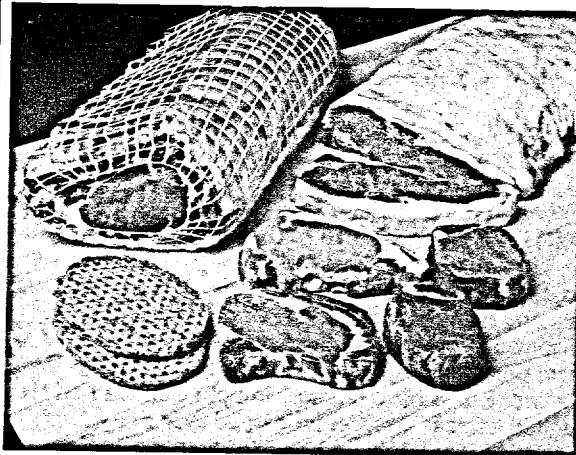
For further information, please direct inquiries to:

David R. Taylor

General Manager

Telephone: (519) 885-7640

Telex: 06-955315



# Portage Trade Development

175 Columbia Street West, Waterloo, Ontario N2J 4M3 Tel.: (519) 885-7640

