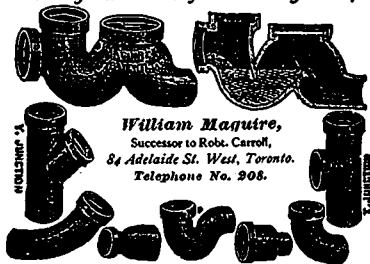


**Maguire's Sewer Gas Preventive,
Flushing and Self-Cleaning Trap.**



William Maguire,
Successor to Robt. Carroll,
84 Adelaide St. West, Toronto.
Telephone No. 208.

SEWER PIPE,
Chimney Tops, Fire Brick, Fire Clay,
Portland and Native Cements,
Samuel Cabot's Celebrated Mortar Colors and Creosote Stains
ALWAYS ON HAND.

NOTICE.

BUFFALO, N. Y., December 7, 1888.

Dear Sir: I have examined the Maguire trap with great interest, and I am convinced that it combines, in a simple and complete manner all the true principles of a perfectly ventilated water-seal, and will take the greatest pleasure in recommending it to every one.

Respectfully,

A. H. BRIGGS,
Health Physician, City of Buffalo, N. Y.

**PORTLAND CEMENT AND PLASTER
PRESSED AND MOTTLED FRONT BRICKS
FIRE CLAY, FIRE BRICK AND SEWER PIPES,
ONRAMENTAL TERRA COTTA AND FIREPROOFING**

Telephone 701.

YARD: NORTH TORONTO STATION.

E. D. MORRIS

34 YONGE STREET, TORONTO.

Exclusive control of THE SERPENTINE GREENSTONE
QUARRIES for the Dominion.

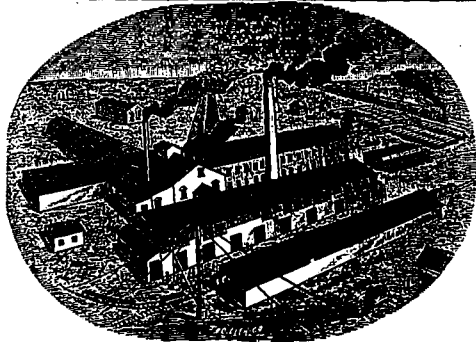
**ROOFING AND PAVING
MATERIALS**

TARRED FELT, 2 and 3 ply,
BUILDING PAPERS,
COAL TAR, PITCH,
DEAFENING FELTS.



ALEX. McARTHUR & CO.
660 Craig Street, Montreal.

Factory: Paper Mills:
Harbour and Logan Streets, Montreal. Joliette, Que.



ESTABLISHED 1870.

Beamsville Pressed Brick Co.,

MANUFACTURERS OF

Fine Pressed
Plain
Ornamental
Rock face

BRICK
Farm Drain Tile,
Roofing Tile, etc. other shades.

Red
Brown
Buff
AND

Our goods cannot be excelled in quality. No time or impurities
as often found in clay.

Office and Works:

BEAMSVILLE, ONT.

Telephone communication.

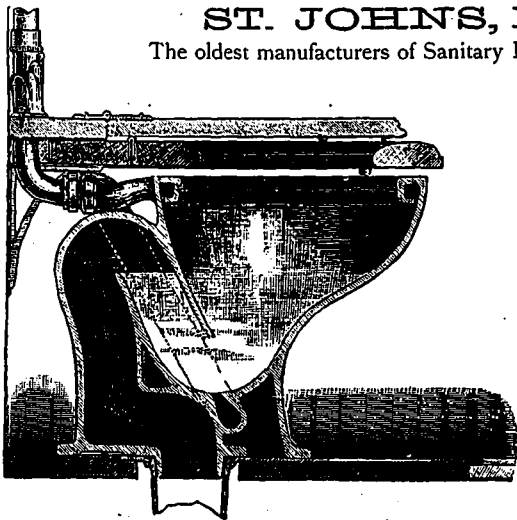
SALES AGENTS
ELLIOTT & McKENNY,
34 Yonge Street, - TORONTO.
E. C. HOPKINS,
145 St. James St., MONTREAL.

DOMINION SANITARY POTTERY CO.

ST. JOHNS, P. Q.

The oldest manufacturers of Sanitary Earthenware in Canada.

THE "PRIMO"
Direct Action Syphon-Jet Water-Closet.



A full line of all the BEST and MOST POPULAR

CLOSETS, BASINS, etc.

WE have selected this pattern as being one of the best of the Syphon Closets now in use. It is simple, quiet and effective in action, and has four to five inches seal of water in the bowl. The jet, besides the Syphon, acts upon the water in the bowl, facilitating the outgo, so that a limited quantity of water is required for each operation. We make it in white and ivory ware, plain or embossed, and decorated in colors, if desired. We make these Closets entirely in one piece and in one mould, so that there are no seams, as by the ordinary method of manufacture, thus preventing any risk of flaws or leaks from imperfect joints. The very best imported materials are used, and the Closets will not craze or discolor.

BRANCH HOUSE:

W. B. MALCOLM

89 and 91 Church St., TORONTO, ONT.