

£25 per month, cost much less than those made by younger and less experienced draughtsmen. While the average cost of drawings for the whole office was about £2 16s. per sheet, the cost of those made by some of the more experienced men went down to from £1 12s. to £2 per sheet. This quite disproved the theory that cheap men meant cheap work. On the contrary, the cheapest work was done by men who knew their business best, and consequently were paid the most. The reason for this is largely due to the fact that drawings properly made at first require but very little checking."

Artemas Ward says: "Why worry about special positions? It must be a mighty poor ad that will bring results only when it is printed in one particular spot in a newspaper. In my experience, the really effective ad will secure a reading for itself anywhere, even though it stands upon its head."

DEBENTURES

Municipalities contemplating the issue of Debentures will find it to their advantage to communicate with

G. A. STIMSON & CO.
Investment Dealers

21 and 26 King St. W. - TORONTO

THE CRESCENT CONCRETE PAVING CO.

Contractors for all branches of

CONCRETE WORK

77 Victoria Street, TORONTO

Yards: 133-135 Wellington St. West.
Phone Main 1649.

Municipal Supplies...

Rock Crushers with Elevators and Revolving Screens, Road Graders, Mud Scrapers, Watering Carts, Steam Road Rollers, Fire Engines, Etc.

T. A. Morrison & Co., 204 St. James St., Montreal.

Paving Granite

Granite Sets for Street Paving. — CURBING cut to any shape ordered. — Fine Rich Colors for Building and Monumental Purposes.

Quarries, St. Philippe d'Argenteuil, P. Q.

Address all communications to

JOS. BRUNET - COTE DES NEIGES, MONTREAL

JOSSON CEMENT .. Manufactured at.. NIEL ON RUPELL

Is the Highest Grade Artificial Portland Cement and the Best for High Class Work. Has been used largely for Government and Municipal Works.
TO BE HAD FROM ALL CANADIAN DEALERS

C. I. de Solan. Manager in Canada :: 180 St. James Street, MONTREAL

Dominion Bridge Co., Ltd. STEEL BRIDGES

For Railways and Highways
Piers, Trestles, Water Towers
Tanks, Buildings, Roofs, Girders,
Beams and Columns

P. O. Address, MONTREAL, P. Q.
Works at LACHINE LOCKS, P. Q.

Toronto Agent: **GEO. B. EVANS,**
38 Canada Life Bldg., TORONTO, ONT

THE CANADIAN SEWER PIPE CO.

MANUFACTURERS OF ..



ST. JOHNS, HAMILTON, P. Q. ONT

— FOR — Sewers

CULVERTS

AND

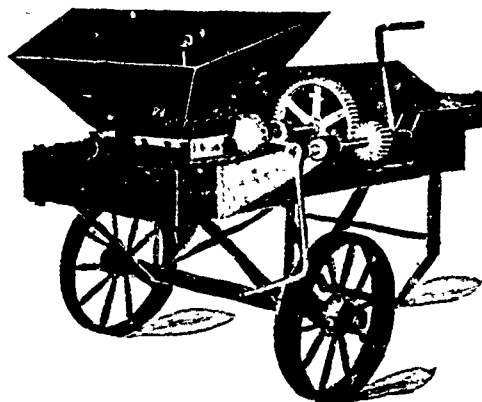
WATER PIPES.

INVERTS

for Brick Sewers

Write for Discounts
TORONTO ONT.

The Rotary Man Power Concrete Mixer



Capacity five cubic yards per hour.

Continuous in Action.

Specially adapted for Sidewalk and Street Work, and all classes of concrete work where a thorough mixture with but small capacity is required.

E. F. DARTNELL,

Sales Agent.

180 St. James Street,
Montreal.

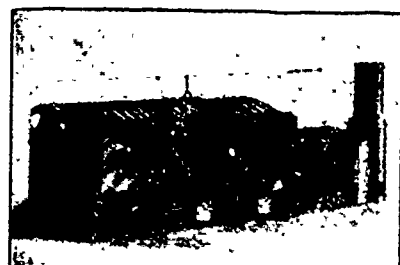
The Canadian Bridge Co., Limited

WALKERVILLE, ONT.

MANUFACTURERS OF

RAILWAY AND HIGHWAY BRIDGES

Locomotive Turn Tables,
Roofs, Steel Buildings and
Structural Iron Work of all descriptions



MANUFACTURED BY

Toronto Furnance & Crematory Co., LIMITED

14 and 16 Queen St. East, TORONTO, CANADA.

Experts in sanitary disposal of dangerous wastes,

Garbage, Refuse, Night Soil, Dead Animals,

For Cities, Towns, Hospitals, Hotels, Abattoirs, etc.

The plants embody the newest features of modern practice and are constructed to meet the requirements of the smallest towns and the largest cities, capacities ranging from 4 to 100 tons daily. Correspondence invited.