

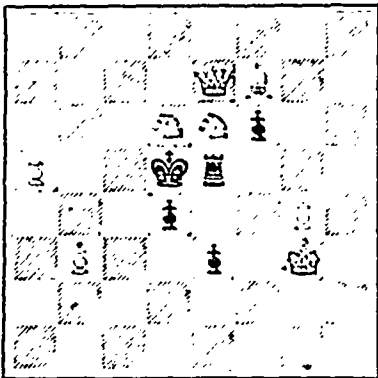
in every house or tenement there must be kindred spirits in this respect. Whenever I see flowers they speak to me favorably of those who cherish or wear them.

Thank God for flowers, by whose beautiful and fragrant lips He speaks to the universal heart of man.

Time's up, and what have I written? My letter is, more than half of it, about an event that has long since ceased to be of current interest, and there are so many subjects of living present interest. Good bye S C

CHESS.

PROBLEM No. 31.  
By Mrs. T. B. Rowland.  
From *Gleaner*  
BLACK 5 pieces



WHITE 8 pieces.  
White to play and mate in 2 moves.

GAME No. 32  
Played in the Wilts county match,  
at Trowbridge.  
French Defence.

WHITE	BLACK
Mr. A. C. Clarke,	Mr. Schouberg.
1 P to K4	P to K3
2 P to Q4	P to Q4
3 P takes P	P takes P
4 Kt to KB3	P to Q B4
5 B to Q Kt5 ch	B to Q2
6 B takes B ch	Kt takes B
7 B to Kt5	K Kt to B3
8 Castles	B to K2
9 R to K sq	Castles
10 P takes P	Kt takes P
11 Q to Q4	Q Kt to K5 a
12 B takes Kt	B takes B
13 Q to Kt4	P to Q Kt4 b
14 Kt to B3	P to Q R4
15 Q to Kt3	B takes Kt
16 P takes P	R to B sq
17 K to K3	Q to Kt3
18 P to Q R4	P to Kt5
19 P takes P	P takes P c
20 Q takes Q P	Kt to B3
21 Q to Kt3	Kt to Kt5 d
22 R to K2	R to B6
23 Q to Q5	Q to K B3 e
24 R to Kt sq	R to Q sq
25 Q to K4 f	P to R4
26 Q takes P	P to Kt3
27 P to R5	K R to Q B sq
28 Q to K4	K R to B5 g
29 Q to K8 ch	K to R2 h

NOTES.

From the Bristol Times and Mirror.

a Threatening B to B4, a dangerous move which White is able to prevent by taking off K Kt.

b Tempting White to take Pawn; for if Q x P, R to Kt sq eventually wins the Rook.

c Doubtful, as it gives White a passed pawn.

d A very powerful move, compelling R to K2, or winning BP with a ch, and enabling Black to play R to B6, attacking the Q.

e Threatening R takes Kt or P; and if ro-takon, to take R with Q and ch.

f White now assumes the offensive, after warding off Black's vigorous attack with judgement and accuracy, this move threatens mate to win the Kt. Black cleverly saves both.

g Hasty; disasters must follow.  
h The position falling into the hands of the adjudicators was easily proved a win for White; a possible continuation, 30 R to K to 7 R B2 31 Kt to Kt5 ch Q takes Kt, 32 R takes P ch R takes R, 33 Q takes R ch K to R3, 34 Q to B8 ch, forcing mate in two or three moves—*Adver-tise.*

Stop that  
CHRONIC COUGH NOW!

For if you do not it may be fatal. For Consumption, Scrophulous, General Debility and Wasting Diseases, there is nothing like

SCOTT'S  
EMULSION

Of Pure Cod Liver Oil and  
HYPOPHOSPHITES  
Of Lime and Soda.

It is almost as palatable as milk. Far better than other so-called Emulsions. A wonderful flesh producer.

SCOTT'S EMULSION

is put up in a salmon color wrapper. Be sure and get the genuine. Sold by all Dealers at 50c. and \$1.00.  
SCOTT & BOWNE, Belleville.

BRITISH AMERICAN HOTEL.

Within Two Minutes Walk of Post Office.

DUNCAN BROUSSARD, - Proprietor,  
HALIFAX, N. S.

ICI ON PARLE FRANCAISE.  
THE MOST CENTRAL HOTEL IN THE CITY

ALBION HOTEL

JAMES GRANT, Proprietor  
22 SACKVILLE ST., HALIFAX.

Terms Moderate.

CONTINENTAL HOTEL,  
100 and 102 Granville St.,  
(OPPOSITE PROVINCIAL BUILDING.)

The nicest place in the City to get a lunch, dinner or supper. Private Dining Room for Ladies. Oysters in every style. Lunches 12 to 2.30.

W. H. MURRAY, Prop.,  
Late Halifax Hotel.

LYONS' HOTEL,

Opp. Railway Depot.

KENTVILLE, N. S.

DANIEL McLEOD, - Prop'r.

New Victoria Hotel,  
248 to 252 Prince William St., St. John, N. B.

J. L. McCOSKERY, Proprietor.

One minute's walk from Steamboat Landing.  
Street cars for and from all Railway Stations and Steamboat Landings pass this Hotel every five minutes.

DOUGLASS & CO.  
NORTH FERRY FOUNDRY  
UPPER WATER ST., HALIFAX.

Manufacturers of Hollow-Ware, Soil Pipe and Fittings.

Iron Fencing and Cresting Fitted up with neatness and despatch.

LIGHT AND HEAVY CASTINGS OF ALL KINDS MADE TO ORDER  
STOVE REPAIR CASTINGS ALWAYS IN STOCK.

We guarantee to give satisfaction. TELEPHONE 416.

WILMOT SPA SPRING CO., L'D.  
Carbonators,  
SPECIALTIES

Royal Belfast Ginger Ale,  
Wilmot Spa Natural Mineral Water.

Our "ROYAL BELFAST" is made from the pure Jamaica ginger root and compounded with great skill and care, and WARRANTED absolutely NON-ALCOHOLIC, and we don't hesitate to say, the BEST IN THE WORLD. Our "WILMOT SPA" NATURAL Mineral Water is bottled in quarts and pints (Apollinaris style) directly at the SPRING, thereby retaining all its MEDICINAL qualities for which it is noted, and is securely packed in cases of 50 quart and 100 pint bottles each for shipping and family use. We use the LATEST IMPROVED Machinery, Cylinders and Connecting Pipes lined with Baucher pure block tin, and this insures the goods from contamination WITH LEAD OR COPPER, thereby being ABSOLUTELY PURE.

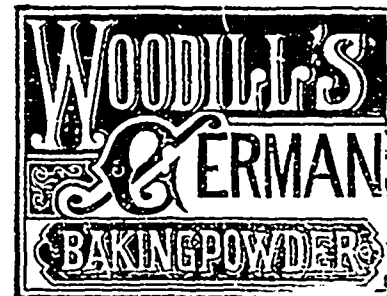
NOTE.—WE DO NOT PUT UP ANY BRAND OF CHEAP GOODS.

HATTIE & MYLIUS, - Halifax, N. S.

Are our Selling Agents, and all orders addressed to them will receive PROMPT ATTENTION.

WILMOT SPA SPRING CO., L'd.

Best and Safest!



Is said by Government Analyst to be composed of ingredients the best and safest for manufacturing Baking Powder.

The finest and largest range of

TAILORS' CLOTHS

to be seen in the city is at

STANFORD'S

THE TAILOR,

156 HOLLIS STREET.

London Rubber Stamp Mfg Co.

Rubber and Metal Stamps,  
Notarial Seals,  
Hectograph Copying Pads,  
Stencil Cutters, &c.  
223 HOLLIS ST., Halifax.

LONDON DRUG STORE,

147 Hollis Street,

J. GODFREY SMITH,  
DISPENSING CHEMIST,

Proprietor. Agent for  
Laurance's Axis-Cut Pebble Spectacles and  
Eye Glasses.

In Stock, the great cure of Neuralgia "Eau Anti Neuralgique." Chronic cases yield to its curative effects.  
Also, in Stock, a line of FANCY GOODS, Dressing Cases, Toilet Sets, in Plush, Leather, &c.

THE BRAS D'OR  
STEAM NAVIGATION COM'Y,  
(LIMITED.)  
SUMMER ARRANGEMENTS.

On and after JUNE 9th the  
Large and well furnished  
STEAMER  
MARION

will leave Port Mulgrave for Sydney and intermediate ports in the Bras D'or Lakes every TUESDAY, THURSDAY, and SATURDAY on arrival of I. C. R. train, due at 2.2, Railway time. RETURNING, will leave Sydney on MONDAY, WEDNESDAY, and FRIDAY at 2 p.m., connecting with Express Train leaving Mulgrave for the West at 10.20 Railway time.

The well known favorite Steamer NEPTUNE will leave Mulgrave for Sydney via St. Peter's Canal and Fast Bay on arrival of the train, DAILY, RETURNING same night, in time for Morning Train.

The beautiful Steamer MAGNOLIA will run on the Lake between WYCOOMAGH & LITTLE BRAS D'OR, via BADDECK, as usual.

Tickets can be purchased at the Ticket Offices of the I. C. Railway, and all information given at office of

J. W. GORHAM & CO.  
Halifax, N. S.  
AGENTS.

WE FILL TEETH,  
MAKE TEETH, AND  
REPAIR TEETH.

In fact we do everything in  
Dentistry, and do it well.  
FEES LOW.  
Rooms, 125 BARRINGTON ST

J. E. MULLONEY & CO. DENTISTS

THE DOMINION PAINT CO.

Are prepared to Supply the Trade with  
MARINE PAINTS

AS BELOW  
ATLANTIC ANTIFOULING COMPOSITION for Iron Ships.  
MOSELEY'S COPPER PAINT, for Wooden Ships.  
LIQUID MARINE BLACK PAINT.  
SEAM PAINT, a Perfect Substitute for Rosin. Also, Black and Light Varnish, Roofing Pitch, Tar, &c. Quality guaranteed equal to anything manufactured.

Office & Works, Dartmouth.  
PHONE 920.