

side of work (that from which the work is done) will have a ribbed appearance, the beads appearing in place upon the outer side when finished.

The fringe is applied by stringing as many beads as will make depth desired, twisting several times to the left, and sewing to bottom of purse, or by entwining the strands as elsewhere described. For the body of purse the beads are all strung on the silk before commencing the work. The accompanying illustration is of a purse made in red silk of a dark rich shade, with steel beads, which makes a handsome combination.

On account of its durability the entwined fringe is recommended, and is made by stringing any number of beads desired for depth of fringe after having firmly attached the silk to the left edge of purse, and forming loop, which is sewed to same point. Again string same number of beads or less if graduated effect is wished, pass two or three times through loop first formed, and fasten to edge at slight distance from former loop, and proceed in this manner, at regular intervals, across bottom edge of purse until opposite side is reached. The first and last loops will have each a loose edge, which cannot be avoided, but which will not be observed.

Materials: One $\frac{1}{2}$ ounce spool Corticelli Purse Twist, Red 1064. Three bunches No. 9 Steel Beads. One $2\frac{3}{4}$ inch Steel Clasp Top with chain. One No. 2 Star Crochet Hook.

Crocheted Beaded Silk Purse No. 10.

BY MARY WARD SHUSTER.

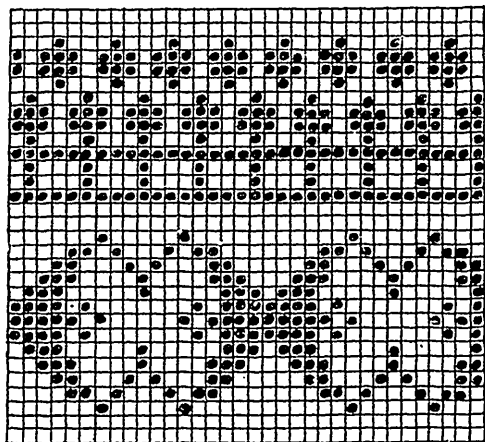


FIG. 284. DETAIL OF PATTERN, PURSE NO. 10.

Gray Purse Twist and steel beads are used for this pattern, surmounted by an oxidized silver top. The length of the purse is a little over four inches. A top similar to the one shown should cost 25 cents; if ordered by mail allow 5 cents for postage.

For instructions to begin the purse see page 326. Follow the rule for the "Seven Point Star Pattern" until the foundation of the round end purse is completed. Continue the work by following carefully the pattern shown by Fig. 284, remembering to take each

stitch in only one vein of the one preceding in order to keep the

DO YOUR EMBROIDERY WITH GENUINE MATERIAL ONLY.