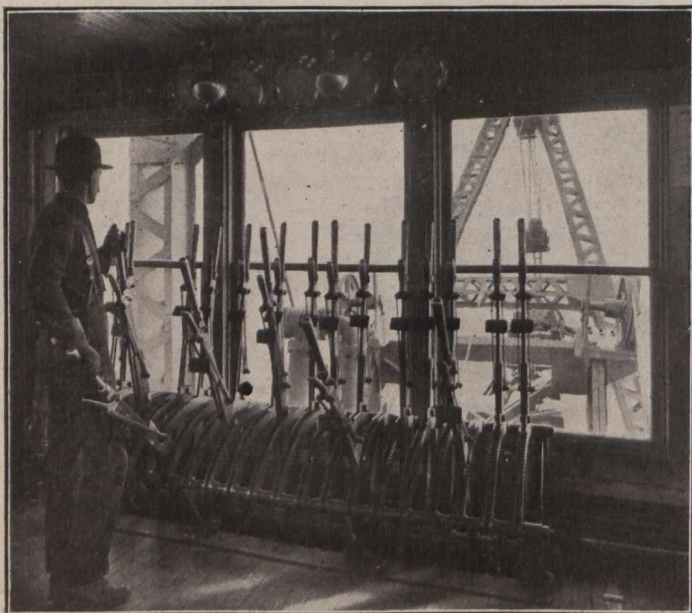


Main Pump Under Installation.

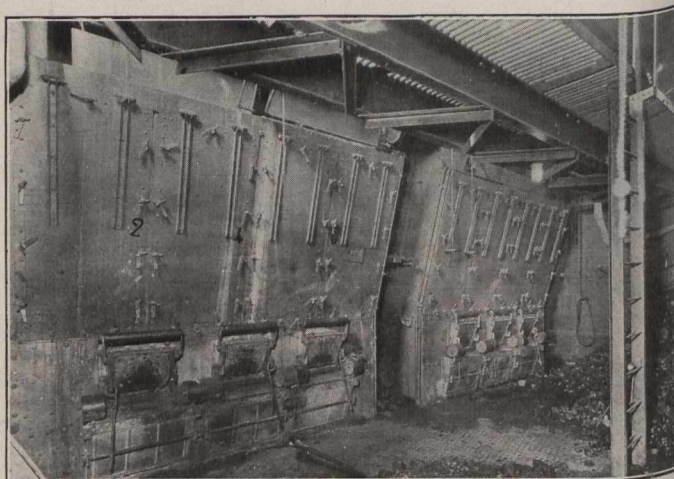


View of Lever Room Control.

are also used for swinging the dredge on in case of trouble with the spuds.

The main pump is placed at right angles to the centre line of the dredge, the discharge being from the bottom and the side, and the discharge pipe running through a bulkhead at the side of the pump room. A right angle turn is made at this point and the discharge pipe continues through the dredge and out at the stern, where is located the double ball and socket joint which permits of a swing of 90 degrees.

From the dredge to the shore the discharge is carried in pontoon pipe having inside diameter of 24 inches and



View of Boiler Room in the "Cyclone" Dredge.

length of 60 feet, with a Parker ball and socket coupling, which connection permits of the high pressures carried on this pipe line. They assume a maximum of 75 to 80 pounds per square inch.

These dredges were designed and completely equipped by the owners, the Canadian Stewart Company, Limited, under direct supervision by their officers.

LAURENTIDE ACTIVITIES ON THE ST. MAURICE RIVER.

Between 800 and 1,000 men are engaged this summer on the improvements at Grand Mère of the Laurentide Company, Limited. The extensions include, besides a new ground-wood pulp mill, a power development designed to ultimately supply 180,000 h.p. In the present development, however, 120,000 h.p. are proposed.

The undertaking was described in *The Canadian Engineer* for October 22nd, 1914. At that time it was expected that at least three 20,000 h.p. units would be ready for operation before winter. However, when the war broke out, operations were temporarily suspended. Arrangements were carried out early in the spring to finance the completion of the work, and this work has been going along quietly but steadily since then. It is now expected that by the end of the year this part of the development will be in operation and the old and new mill equipped with electric motive power apparatus, replacing, in the case of the old mill, direct hydraulic drive.

Practically 3,500 miles of railway lines have been constructed in Saskatchewan since 1905, states a report prepared by the provincial department of railways at Regina. In ten years railway mileage in the province has been almost quadrupled.