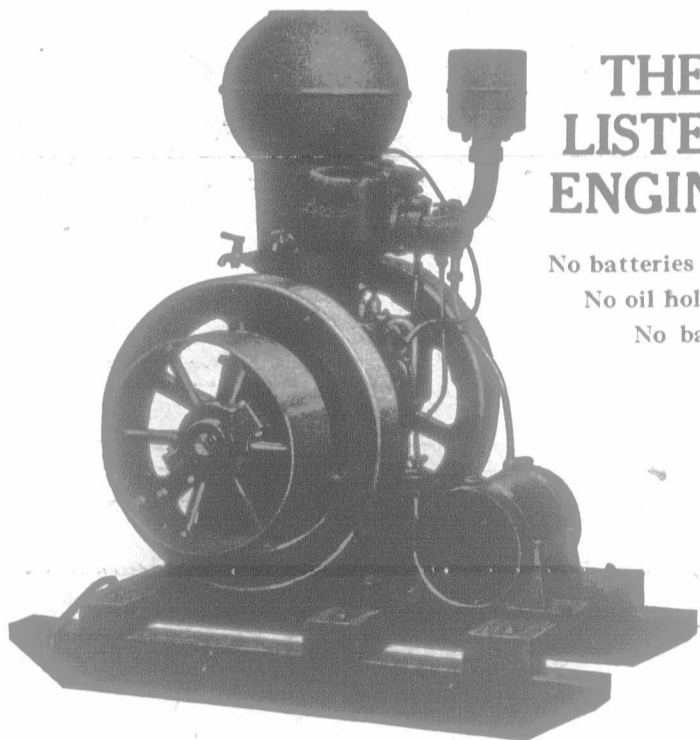


LISTER GASOLINE ENGINES

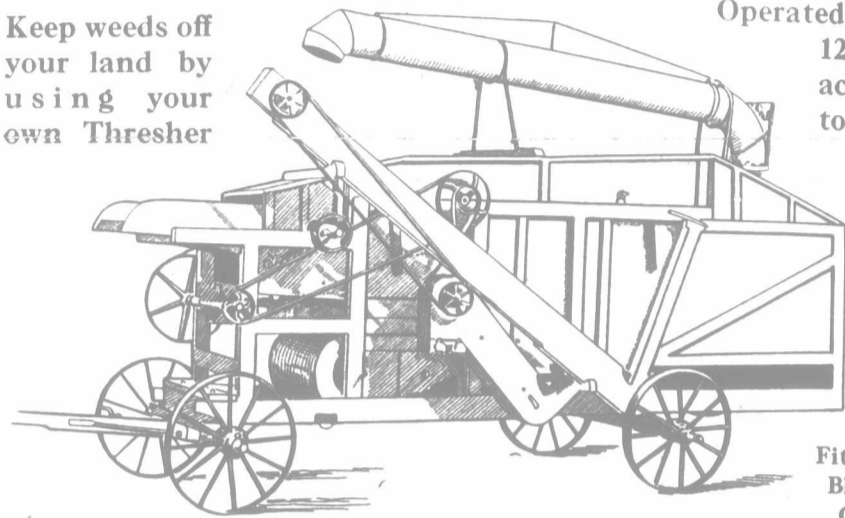
SILOS, FEED CUTTERS, THRESHERS, GRINDERS



THE LISTER ENGINE

No batteries
No oil holes
No babbit

Keep weeds off your land by using your own Thresher



Operated by 3 to 12 h.-p.—according to size.

Fitted with Blower or Carrier

WHAT USERS SAY :

"We can thresh 1,000 bushels a day. I threshed 450 bushels in four hours. One must use your thresher to know it."

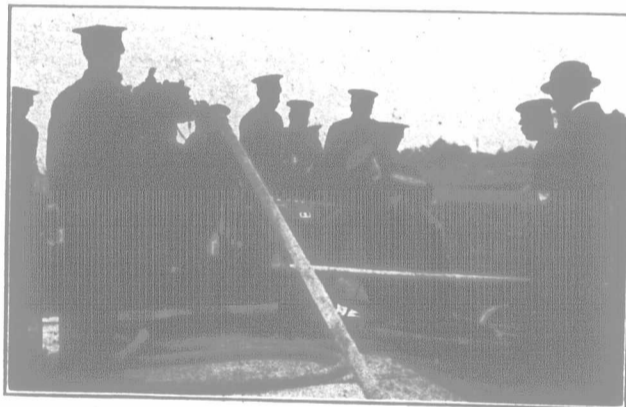
"Cleans the grain well, and the blower works fine."

"Threshes clean in any kind of grain."

THE LISTER ENGINE

maintains that reputation for solid construction and long life associated with goods of British manufacture all over the world. The greatest labor, time and money saver on the farm.

Supplied to the British, French and Canadian Governments, The Canadian Bank of Commerce, etc., etc.



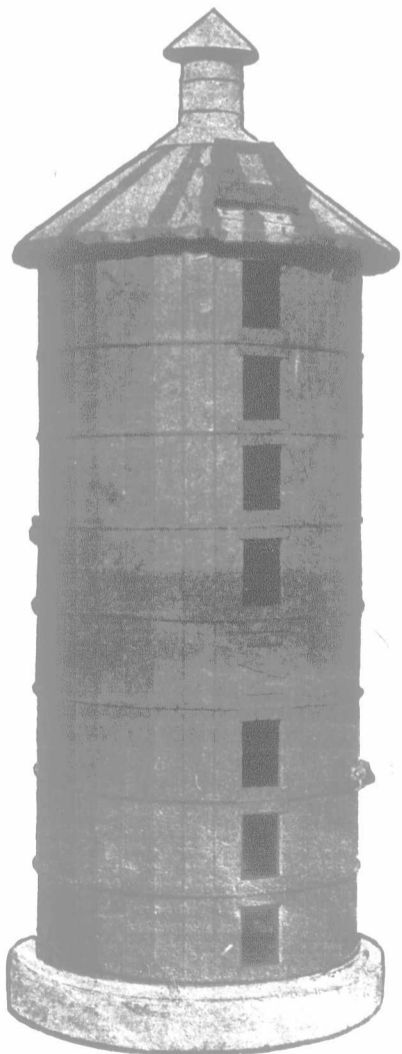
R. R. H. The Duke of Connaught and staff inspecting the Lister Engine and Filtration Plant at Exhibition Camp, Toronto.

The Lister Grain Grinder

5 Horse-power will operate it



The LISTER SILO



Made of selected Canadian No. 1 spruce. Staves side and end matched, dispensing with metal spline.

Sloping hatch offers less obstruction to wind.

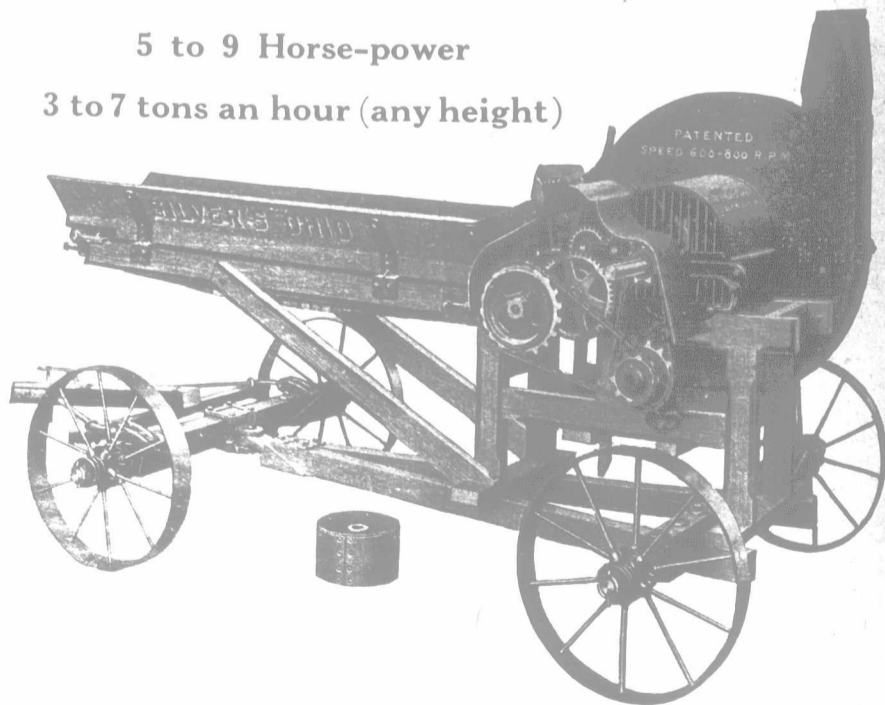
Staves specially treated UNDER PRESSURE with wood preservative.

Lugs on tighteners are of malleable iron, and thus not affected by frost.

FEED CUTTERS Which Give the Greatest Efficiency for Power Supplied

5 to 9 Horse-power

3 to 7 tons an hour (any height)



WRITE FOR INFORMATION TO DEPT. "G"

Or see our exhibit in large tent at Toronto Fair. We are not exhibiting under the Grand Stand this year

R. A. LISTER & CO., Limited, 58-60 Stewart Street, TORONTO

Branches at Winnipeg, Quebec and St. John, N.B.

Works: Dursley, England

PUB



VOL. L.

Te

OUR p... highest o... or exten... get full p...

Ask

If y... local tele... the steps... ested and... or local c...

Our... tical boo...

We... Automat... towns an... reputati... coming r...

The... growin...

Can