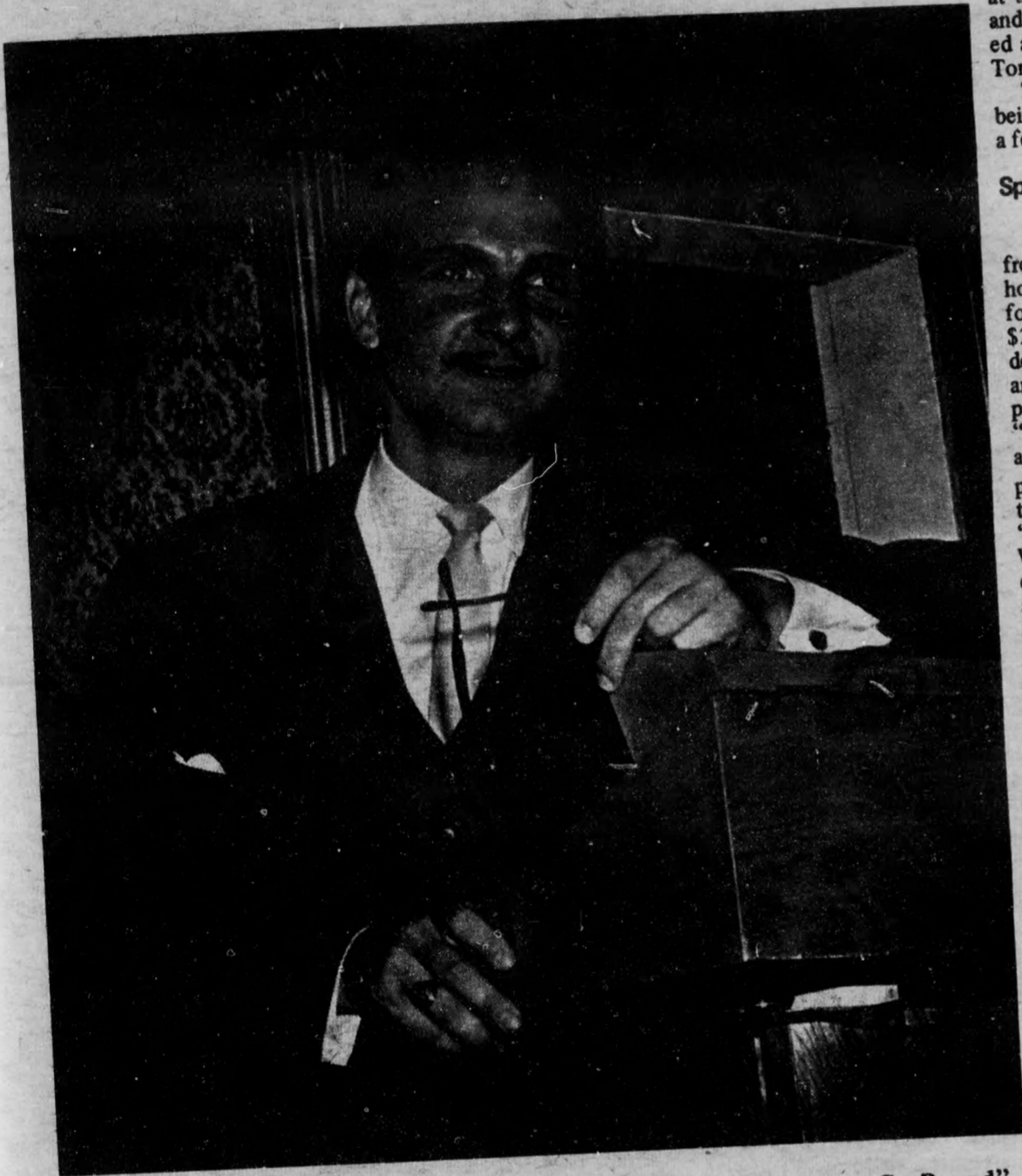


# tnb



Walter Massey appears here in a Montreal production of "The Marriage Go Round" which was critically acclaimed.

Rehearsals are progressing well on "Marriage Go Round" the first production of Theatre New Brunswick's winter season.

The play is a sex farce concerned with a married couple, both of whom are lecturers in human relations at a university. It features a completely professional cast headed by Walter Massey (who will be remembered for his humorous characterizations this summer at the Playhouse), Anne Butler and Angela Roland, experienced actresses from Montreal and Toronto.

The sets and costumes are being designed by Mike Eagan, a former UNB student.

### Special Rate For Students

"Marriage Go Round" runs from Jan 21-25 at the Playhouse. Tickets for one performance range from \$3.00, \$2.50 and \$2.00. UNB students, however, through special arrangements can buy a season's pass which includes tickets for "Marriage Go Round", "Inadmissible Evidence", being put on in cooperation with the UNB Drama Society, "Boeing-Boeing" and Tennessee Williams' "The Glass Menagerie" for a mere \$4.00 - whereas a regular subscription costs anywhere from \$6.00 to \$9.00.

### Plays Will Tour Province

These plays will tour the province after each week-long run in Fredericton. Walter Learning, the director of the Playhouse, conceived the idea of Theatre New Brunswick and one of his main objectives be-

hind it was to introduce regular live theater to such centres as Woodstock, St. Stephen, Moncton and Saint John. Arrangements have been made to take two of the four plays to Charlottetown, PEI.

Because of the relatively underdeveloped taste of New Brunswickers for live theatre, a compromise has been made in the choice of plays to be presented by tnb. The two heavily dramatic plays, John Osbourne's "Inadmissible Evidence" and Williams' "The Glass Menagerie" are being tempered by two situation comedies. This will make the appeal of the winter season wide and varied.

"Inadmissible Evidence", according to Learning, is such a controversial play that the production of it would be impossible for the Playhouse with-

out the co-operation of an outside group - UNB's Drama Society. The potentially hostile reaction of audiences to the play can then be directed at not only tnb but also the university group which willingly accepts responsibility for its choice. "Inadmissible Evidence" will be the Drama Society's entry in the NB Regional Drama Festival to be held in Fredericton in March.

Can Theatre New Brunswick give the cultural shot-in-the-arm that New Brunswick needs so badly, or will it fail as an over-ambitious dream? Initial public interest which has been high, with five hundred subscriptions so far will probably increase with the production of the comedy "Marriage Go Round".



Anne Butler plays the ravishing, desirable young wife in "The Marriage Go Round", which opens Jan 21 at the playhouse.

**SEE**  
**BOEING - BOEING**  
**INADMISSABLE EVIDENCE**  
**THE MARRIAGE-GO-ROUND**  
**THE GLASS MENAGERIE**