

Men's Heavy Milanese Silk Gloves

With chamoulette lining, and black silk embroidered backs, with fine in-sewn seams. These gloves are termed "seconds" because of some slight weave defects in the silk. Grey only. Sizes 7½ to 9. Today, pair, \$2.45.

EATON'S DAILY STORE NEWS

CLOTHING BARGAINS

The Feature of Which --- In the Case of Suits --- Is the Varied Selection of Materials and Patterns and the Number of New Models That Are Involved.

Men's and Young Men's \$42.50 to \$57.50 Suits Priced Today at \$36.50



THE Men's Suits are in two and three-button, semi-fitted conservative models, with regular notched lapels and flap pockets. Materials consist of all-wool, wool and cotton and union wool and cotton fabrics, in worsted cheviot and rough tweed effects. Patterns and shades consist mainly of brown with mixed stripe, green with light green stripe, grey with black stripe, and black with white mercerized cotton hairline stripe.

The Young Men's Suits are in two-button, plain, single-breasted styles, with slash pockets and plain straight fronts; all-round detachable belt styles, and two-button; double-breasted models with three-quarter attached belts. These last mentioned models have pleated fronts and crescent pockets. Patterns and shades consist of dark brown, brown with stripes, and green checked effects. Lapels are peaked or notched.

One has a choice of all-wool, wool and cotton and union wool and cotton materials.

There are not all sizes in any one pattern, but in the lot are sizes from 35 to 48.

Reg. \$42.50, \$45.00, \$47.50, \$50.00, \$52.50 and \$57.50. Today,

\$36.50

TROUSERS \$3.35



THESE are of cotton and wool and cotton materials, in grey striped and checked worsted finished fabrics, and stripe tweed materials. All are well proportioned and strongly sewn, and have belt loops, two hip, side and a watch pocket, and plain bottoms. Not all sizes in any one line, but in the lot are sizes from 32 to 42. Today

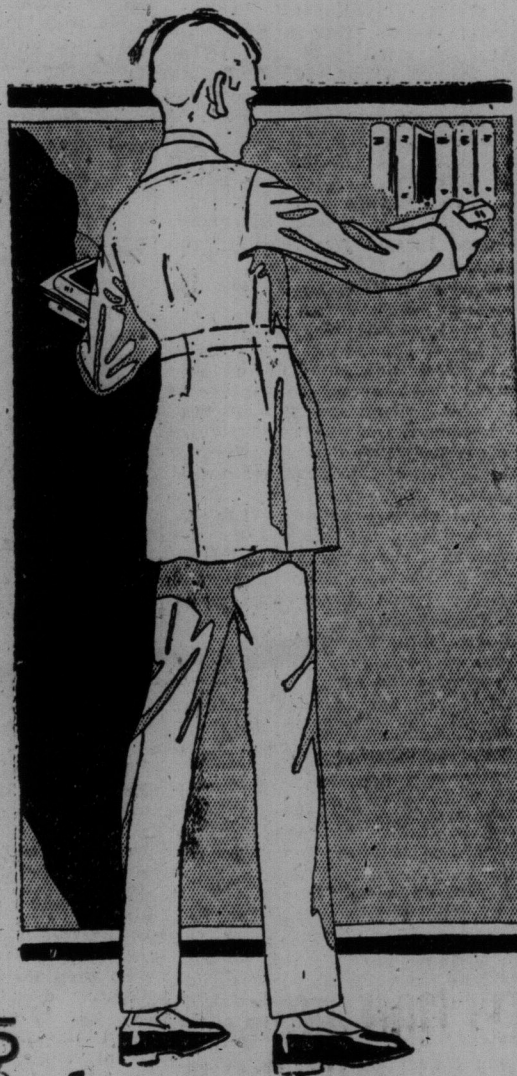
\$3.35

Youths' and Boys' First Longers, Reg. \$28.50 to \$32.50, Today \$23.75

THE models include two-button single-breasted models, with patch, slash or crescent pockets, or form-fitting styles with three-quarter detachable belt; lapels are peaked or in notched style. Some of the sleeves are plain, others have bell cuff effect.

Materials consist of all-wool, union wool and cotton, and cotton and wool tweed fabrics, and cheviot finish materials, in mixed fawn, brown and blue-grey shades in checks, stripes and heather mixed effects. Vests are in five-button style and are cut fairly high. Trousers are narrow, straight-cut and have two hip and two side pockets, one watch pocket, belt loops and cuff bottoms.

As this is a clearance of odd lines, there are not all sizes in every pattern, but in the assortment are sizes from 33 to 37. Regular \$28.50 to \$32.50. Today, \$23.75.



A BIG EVENT IN NECKWEAR IS STAGED FOR TODAY, TOO

\$1.50 to \$3.00 Neckwear Being Priced at 98c

Umbrellas
Reg. \$6.00 to \$9.00, Today, Each, \$4.85



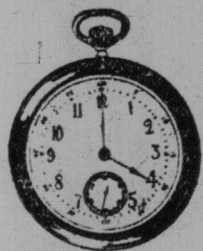
They're suitable for men or women, and have silk and cotton mixed covers, taped edges and paragon frames. Amongst those for women are colored wrist rings, leather straps, cord wrist loops or sterling trim.

Those for men are in crook or opera style, and some are sterling trimmed. Reg. \$6.00, \$7.00, \$8.00 and \$9.00. Today, each, \$4.85.

—Main Floor, Yonge St., Main Store.

Men's Watches

Are Priced at \$6.50



They're of a neat, convenient size, and have a 15-jewel lever movement, fitted into an Empress quality gold-plated case, with screw back and bevel, engraved or engine-turned designs. Today, each, \$6.50.

Gold-plated Watch Chains, Albert style, in patterns suitable for general use. Today, each,

\$1.00

—Main Floor, Yonge St., Main Store.

Store Opens at 8.30 a.m.

Closes at 5 p.m.

Men's Socks

Reg. \$1.39 and \$1.50
Pair 95c

They're of silk-plaited on cotton, in colors of black and navy, black and green, black and tan with fine ribbed cotton cuffs; also heels and toes. Also a fine ribbed all-wool cashmere, in grey, blue or tan. In the lot are sizes 10, 10½ and 11, but not in each line. Reg. \$1.50 and \$1.39. Today, pair, **95c**

—Main Floor, Yonge St., Main Store.

Men's Shirts and Drawers, "seconds," from the Penman Company, made of fine cotton balbriggan; shirts have outside facings, long sleeves and drawers are ankle length. Sizes in shirts, 34 to 44; drawers, 32 to 44, except 42. Today, in Men's Wear Annex, 85c.

THERE are the stylish graduating shapes that tie up into small, neat knots or the wider flowing end ties that are still favorite. Many are made of silk, others of silk and fibre silk, and some are cotton and artificial silk. In bright and sombre tones of blue, purple, green, brown, grey and maroon, and some black and white combinations. There are the smart bias stripes, all-over figured patterns, floral, scroll and leaf effects. There's such a great assortment that you may feel fairly sure of being able to find just the sort of tie you have in mind. Reg. \$1.50 to \$3.00. Today, each,

98c

Men's Combinations, "seconds," but the defects should not affect service; made of fine cotton yarn, natural shade, French neck, closed crotch, and are ankle length. Sizes 34 to 44. Today, suit, \$1.45.



Men's Outing Shirts of white duck and plain cotton, made with collar attached, yoke, breast pocket and generously cut bodies. There are also a few slightly counter-soiled outing shirts of better mixtures in stripes, plain white, tan, duck and others. Sizes in the lot, 14 to 16½. Today, each, \$1.48.

—Main Floor, Centre and Annex, Main Store.

Men's Belts, wide or narrow, flat or tubular, in black, tan or grey; some all leather, others leather with canvas lining or Keratol backs. They are in smooth or pebbled grain finish, or tan or grey suede. Sizes in the lot, 30 to 42. Not more than four belts to each customer. Today, each, 37c.

Men's Fedoras

Reg. \$3.45 to \$3.95, Today, \$2.95

They're of fine soft fur felt, in fedora shape, with medium drooping or flaring brims, in greys, greens, browns and blacks. Sizes in the lot, 6¾ to 7¾. Reg. \$3.45, \$3.50 and \$3.95. Today, each, \$2.95.

Men's Caps, of all-wool and cotton tweeds, in a variety of checks, diagonals and plain shades of light grey, brown and green. Sizes in the lot, 6¾ to 7¾. Reg. \$2.50 and \$3.00. Each, \$2.10.

Chauveur's Caps at half-price. Sizes in the lot, 6¾, 6¾, 6¾, 7¾ and 7¾.

Fawn. Reg. \$1.50. Today, each, 75c. Fawn. Reg. \$2.00. Today, each, \$1.00. Grey. Reg. \$2.50. Today, each, \$1.25.

Black silk. Reg. \$3.50. Today, each, \$1.75.

—Main Floor, James St., Main Store.

Men's Leather Pocket Cases

In the single fold style, with two compartments for letters, spaces for stamps and cards, made of brown velvet calf leather with leather edging. Reg. \$5.00 and \$6.00. Today, each,

\$3.00

—Main Floor, Yonge St., Main Store.

Men's Boots

Reg. \$10.50 to \$12.00

Today \$6.95



They're of black vic kid, in balmoral lace style, medium fitting shape, British made, with Goodyear welted soles of medium weight. Sizes 5½ to 11. Reg. \$10.50 and \$12.00. Today, pair, **\$6.95**

—Second Floor, Queen St., Main Store.

T. EATON CO. LIMITED