

The Robert SIMPSON Company

Store Opens 8 a.m.

Closes at 5.30 p. m.

H. H. Fudger, Pres.

J. Wood, Manager

PROBS.—Light to moderate winds; fine and warm.

The Robert SIMPSON Company

### To Tourists, Summer Visitors and Mail Order Customers

This store has the pleasure of knowing many of you by name and address and we desire that you should know the store by personal inspection.

What we say in print may sometimes appear boastful, but when you spend a day with us enjoying our comforts and hospitality as well as admiring our elegant equipment and varied stocks, you'll say "the half was not told me."

Now that's the kind of verdict we value and that's why we believe in a large reserve, whether it be security of construction, abundance of fresh air, extra room, comfort and safety in elevators, wearing quality in material, honesty in workmanship or the margin of worth always in your favor no matter what you buy.

Restaurant - - - - - Top Floor  
Soda Water and Ice Cream - Basement  
Parcels Check Office - - Main Floor  
Ladies' Rest Room - - - Third Floor

### Tuesday's China

REGULAR \$47.50 DINNER SET, TUESDAY, \$25.00

Genuine Limoges China, one of the famed Bernard and Cie production; the set comprises 102 pieces; coin gold decorated; need to be here early for this superb value. Tuesday, extra special . . . . 25.00

12 only High-grade English Dinner Sets, rich decorations. Regular up to \$25.00. Tuesday . . . 10.00 (No phone or mail orders.)

200 Royal Doulton China Plates. To clear . . . 25

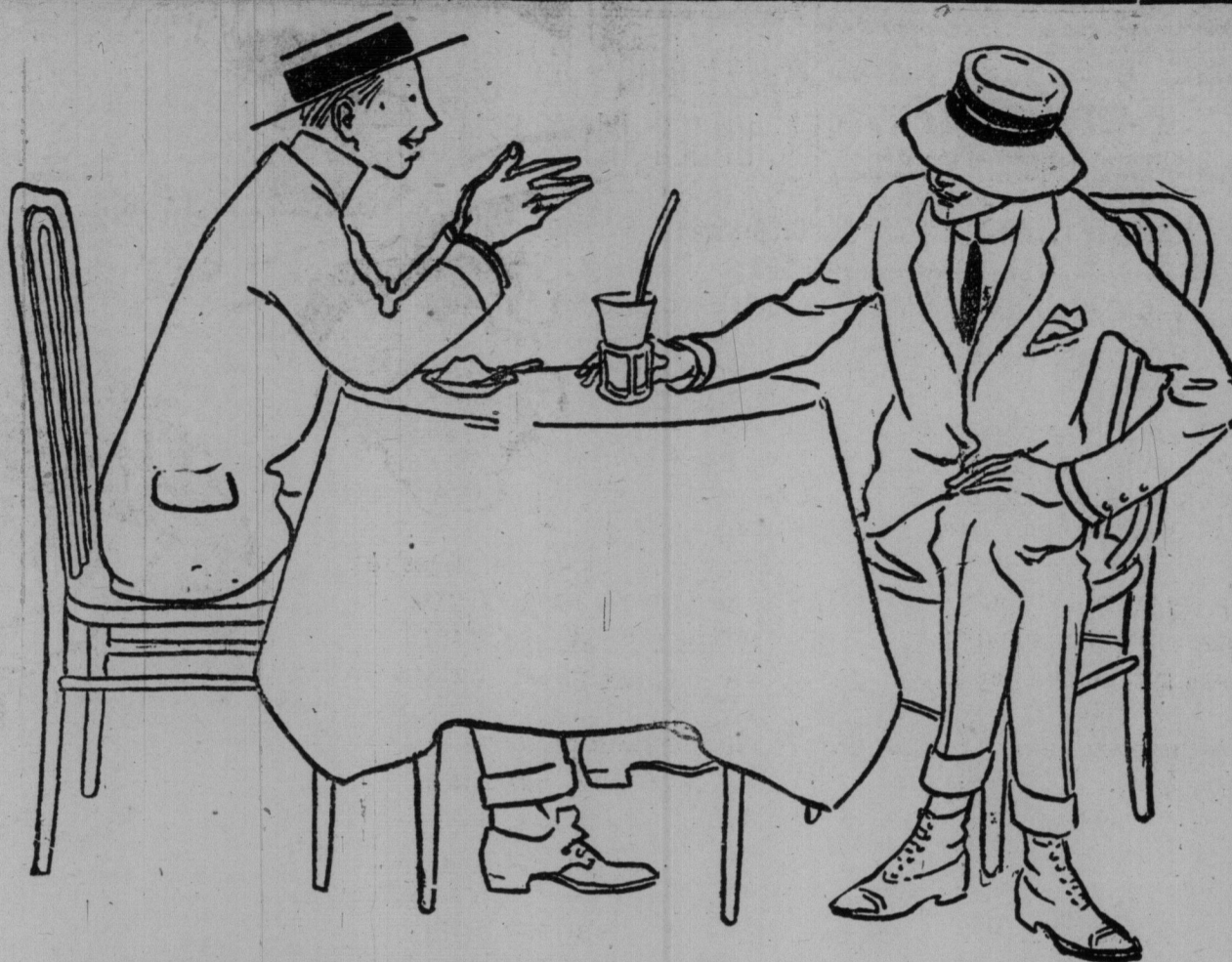
Toilet Sets, 10 pieces, good assortment of shapes and decorations. Tuesday . . . . . 2.69

For the berry season, Fruit Jars, improved gem. Pints, per dozen .55; quarts, per dozen . . . . . 65

Champagne Glasses, baccarat crystal, hollow stem, etched lace design. Tuesday, per dozen . . . 5.00

Wines, Cocktail, Liquor Tumblers, to match above. Tuesday, per dozen . . . . . 3.00

On Thursday, Coronation Day, the Store Will Close at 1 P.M.



### No Room for Argument

In spite of the backward weather during June, a man should have his Summer suit ready NOW, so that he'll be able to change as suddenly as the weather does. If the hot wave comes this week, you'll be right in line with one of these two-piece suits on which we offer to-morrow a saving of five or six dollars.

The answer to the census questions should be as truthful and short as these which are given to the man in search of reliable clothes at less than they usually cost.

What kind of suits are they? Flannel-finished English Tweeds, Lightweight Worsteds and Homespuns, in two-piece style.

How much? \$8.95.

What's the matter with them? Nothing. They are well made, of the best materials.

Why are you selling them at \$8.95, when last week you were getting from \$12.00 to \$15.00 for suits like them? Because this is a sale of all the odd sizes left after an early summer's selling, and we want to make sure of a complete clearance.

Can I get a proper fit? Yes, if you come on Tuesday fairly early.

Why early? Because there are only 110 suits.

English Terry Cloth, in assorted stripes; 52 to 58 inches long . . . . . 4.00

Three hundred of them, in natural or bleached finish. This shipment is one of especially good quality, and \$5.00, the price of these hats, could easily be doubled, and still the hats would go quickly. Tuesday . . . . . 5.00

This is the second day of the great Pyjama Sale. There are 500 suits for Tuesday; summer weights; neat designs; marvelous bargains; not one pair sold regularly would be priced at less than \$2.50, and many as high as \$4.50. Tuesday . . . . . 1.49 (See Windows.)

A Clean-up of Odd Outing Shirts, some with separate soft collars, but mostly reversible collars; materials are plain and fancy reps, figured cambries, swassettes and cashmerettes; all sizes in lot; several colors. Regular up to \$2.00. Tuesday . . . . . .89

### Summer Footwear at Special Prices

**BAREFOOT SANDALS.**  
2000 pairs Barefoot Sandals, selected tan calf-skin, two straps and buckles, solid leather soles, sewn and re-inforced:

- Men's sizes, 6 to 10 . . . . . \$1.25
  - Women's sizes, 3 to 7 . . . . . .99
  - Boys' sizes, 1 to 5 . . . . . .99
  - Misses' sizes, 11 to 2 . . . . . .79
  - Children's sizes, 5 to 10 . . . . . .69
  - Infants' sizes, 1 to 4 . . . . . .59
- (Phone orders filled)

**WATER RUSH SLIPPERS.**  
1000 pairs Women's Water Rush Slippers, made in Austria; very cool; sizes 3 to 8. Regular 50c. Tuesday . . . . . .29

**BATHING SHOES.**  
500 pairs Canvas Bathing Shoes, fiberline soles:  
Men's sizes, 6 to 11 . . . . . .39  
Women's sizes, 3 to 7 . . . . . .29  
Misses' sizes, 11 to 2 . . . . . .25  
Children's sizes, 8 to 10 . . . . . .22  
(Phone orders filled.)

### Linens and Staples for Tuesday

**ROUND SCALLOPED DAMASK TABLECLOTHS**  
Pure Linen Fine Satin Damask Tablecloths, beautifully bleached and finished; round designs; cut round and scalloped; 81 x 81 inches. Regular \$5.50 each. Tuesday . . . . . 3.88

**WHITE DUCK FOR SUMMER DRESSES.**  
Good weight for summer skirts and coats; 28 inches wide; 400 yards only. Tuesday, yard . . . . .16

**TURKEY CHINTZ COMFORTERS.**  
100 only 72x72-inch Turkey Chintz Comforters, white fluffy filling, reversible, well quilted. Tuesday . . . . . 1.48

**SPOKE HEMSTITCHED SHEETS.**  
Note the size, 72x99 inches; these are of superior qualities; they are made from one of the best linen-finished English sheetings, spoke hemstitched; deep hem on top; plain hem on bottom; 36 pairs only. Pair, Tuesday . . . . . 3.25

### Bedroom Wall Papers

250 Room Lots at Half Price, in a great variety of new designs and attractive colors. Here are prices for a 12x12 room, 8 feet high: Regular \$1.60. Tuesday, .80. Regular \$2.70, Tuesday, 1.35. Regular \$3.60, Tuesday, 1.80. Regular \$4.50, Tuesday, 2.25. Regular \$9.00, Tuesday . . . . . 4.50

Bedroom Moulding, per foot . . . . . .1 1/4

Cut-outs and Friezes. Regular from 5c to 15c. Tuesday . . . . . Half Price

# For the Summer Cottage and Verandah

Another day in our House Furnishing Department given up to the needs of the Summer Cottage. Below we give a comprehensive list of suitable accessories to make the cottage comfortable.

**Crex Mats**, well woven, in greens and browns, with suitable floral and Grecian border designs: 18-inch x 36-inch, each, .35; 24-inch x 48-inch, each, .60; 30-inch x 60-inch, each, .90; 36-inch x 72-inch, each, 1.35; 8 feet x 10 feet, each, 7.00; 9 feet x 12 feet, each, 9.75; 9 feet x 15 feet, each . . . . . 11.00

**Japanese Mats**, in useful floral and Oriental designs. These are printed colors, very effective and cheap. Two sizes only.

9 feet x 10 feet. Tuesday, special . . . . . 1.67

9 feet x 9 feet. Tuesday, special . . . . . 1.49

**Japanese Verandah Mats**, in a variety of serviceable designs and colors, 18 inches square. Tuesday, each . . . 25

**Japanese Sandals**, a boon for tired feet, cool and comfortable, strongly made. While they last Tuesday, per pair . . . . . .18

**Sand and Grass Seats**, made from specially grown grass; useful and durable. Tuesday . . . . . four for .10

**Japanese Wind Chimes**, musical and decorative; a variety of colors and sizes. Tuesday, each . . . 5, .10, .15, .25, .45

**\$15.00 Tent for \$11.95**, made of best 8-ounce duck, all seams reinforced, inside ridge pole, complete with guy ropes, poles and pegs. Tuesday . . . . . 11.95

**Curtain Poles**, oak, mahogany or walnut finished poles, 5 feet long, 1 1/2 inches thick, brass or wood brackets, ends and rings. Worth 45c. Tuesday . . . . . .27

**Curtain Net**, flat or frilled window curtaining, of excellent wearing net, finished with lace and insertion; full one yard wide. Regular per yard 25c. Tuesday, selling at . . . . . .17

**100 Hammocks** (in basement), closely woven, with valance and fringe, strong hammocks, with head pillow and foot spreader. Regular \$2.75. Complete, with hammock hooks. Tuesday . . . . . 1.89



THE ROBERT SIMPSON COMPANY LIMITED

Pair o  
downe  
Rented  
PR  
WI  
Go  
In Mee  
on Th  
Form  
Says  
adian  
Count  
Fargo  
Wilfri  
Wars  
1. P  
sion.  
2. W  
trol t  
3. H  
Hude  
4. G  
operat  
5. A  
WINNI  
The Wall  
the door  
Conservat  
tour. Ev  
thousand  
auditorium  
large nur  
It seeme  
soon week  
cicera, c  
struck the  
gent that  
recipro  
ed cleari  
Mr. Bor  
personal  
of policy  
from rec  
using ch  
esplicit  
and sea  
plause.  
Mr. Bor  
greeting  
to his fa  
several m  
Mr. Bor  
that he ha  
Premier  
Robin wi  
Borden  
fusion to  
tion of th  
Empire."  
Borde  
Mr. Bor  
source his  
proposed,  
carry out  
1. To ap  
commission  
on the be  
try and n  
2. To gi  
control of  
8. To gi  
son Bay  
commission  
4. To pr  
under p  
ment open  
5. To pr  
ment trad  
establish  
Mr. Bor  
pact on  
with some  
some sup  
"neutral"  
Then he  
quest on  
clared tha  
cial union  
union wou  
This wa  
"No."  
Laught  
"Edward  
my young  
tortured  
Mr. Bor  
The crow  
out "Ince  
Mr. Bor  
he wou  
attitude in  
The men  
drew loud  
"We'll  
son," and  
went on t  
ferences  
would be  
"neutral"  
There wa  
"I call t  
said Mr. B  
Wilfrid's u  
Then the  
Mr. Bor  
people to  
which she  
Again he  
which kept  
taken his  
A  
"At this  
"It is d  
difficultie  
thers of  
tempted to  
task dema  
mination,  
to the point  
vinces whi  
only one-te  
Canada. T  
than one-he  
The underl  
into one  
communitie  
along the  
and power  
tween the  
was an un  
uninhabit  
little inter  
ours, and  
communitie  
the by pr  
Yet what  
tended the  
most impos  
by these m  
course, an  
have since  
Continue