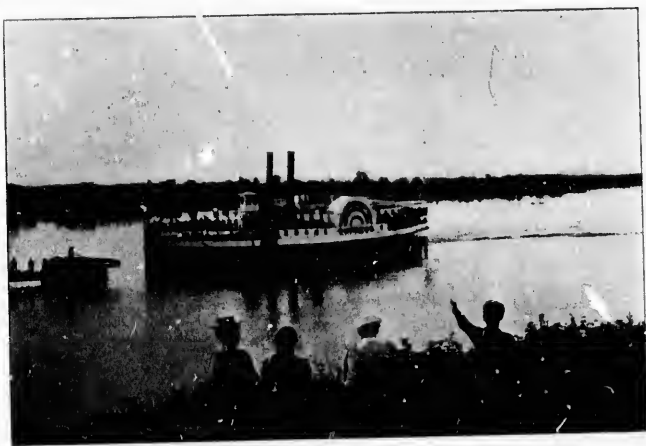


THE TRIP BY STEAMER.

The trip by steamer, either "up the Ottawa" to the capital of the Dominion; or "down the river" to Montreal, is one of the most beautiful and charming trips in Canada. The steamers are modern steel vessels, very fleet, and well adapted for day tourist travel; commodious and comfortably furnished, and the meals are well prepared and nicely served; the officers of the Company are experienced and renowned for their politeness and attention to passengers.



Approaching Besserer's Grove on the Ottawa.

Leaving the capital of the Dominion behind, the tourist will see on the north side the mouth of the Gatineau, a large and important lumbering stream, which has been surveyed for three hundred miles from its junction. The steamer touches at Templeton, on the Quebec shore, thence proceeds to

Besserer's Wharf, in Ontario. Here there is a very comfortable and commodious hotel, the Jubilee House, which is a new summer resort within easy access of the city of Ottawa. The special attractions being cool shades and breezes among the pine trees on the river bank; excellent fishing and boating, and perfectly safe agreeable bathing on the fine beach. The guests at Jubilee House no doubt thoroughly enjoy themselves at this popular resort.