

The Robert Simpson Company, Limited

A Carload of Men's \$4, \$4.50 and \$5 Shoes, Monday \$1.99

We have just cleared one of the largest wholesale houses in Toronto of their entire stock of Men's Goodyear Welted Oxford Shoes, in all leathers, button or laced styles, all sizes in each style.

If you cannot come to the store, telephone direct to department, you'll not be disappointed.

Description: Finest tan Russia calf, selected patent coli, gunmetal, and velours calf leathers; wide, medium, or narrow toes; high or low heels. Every pair are Goodyear welted and made on the newest lasts. Either button or laced styles. All sizes from 5 1/2 to 11, and lots of each size. Regular selling prices were \$4.00, \$4.50 and \$5.00. Monday, less than half-price **1.99**

LOW SUMMER SHOES FOR WOMEN, \$1.95

Made on this season's best fitting and most stylish lasts. There are Oxfords in both button and laced styles, and Pumps with or without ankle straps; also the popular Colonial; fine vici kid, patent coli, gunmetal, black suede, and tan Russia calf leathers; medium weight soles, high, medium and low heels. (About 240 pairs of these high-grade shoes are "Classic" samples.) Sizes 2 1/2 to 7. Regularly \$2.50, \$3.00, \$3.50. Midsummer Sale **1.95**

BAREFOOT SANDALS

Sandals are cooler and more comfortable than any other summer footwear for children. These are made from cream American elk and tan leathers, fancy open vamps, and two straps and buckles, reinforced soles:

- Sizes 12 to 2. Midsummer Sale **.79**
- Sizes 9 to 11. Midsummer Sale **.69**
- Sizes 5 to 8. Midsummer Sale **.59**
- Sizes 2 to 5. Midsummer Sale **.49**

(No heels)

Women's Sandals, same style as above, in tan only. Sizes 3 to 7. Midsummer Sale **.99**

(Second Floor)

Brass Fenders and Fireplace Fittings

Special Half-Price Sale, including a great variety of styles and designs.

- Polished brass round "Colonial" type fender. Regularly \$8.50. Sale price **4.25**
- Antique hammered brass curb, mounted on wood base. Regularly \$10.00. Sale price **5.00**
- Brushed brass, pierced design, very neat. Regularly \$12.00. Sale price **6.00**
- Mission design, antique hammered brass. Regularly \$18.00. Sale price **9.00**

Fire Sets, in polished brass or brushed brass, consisting of five pieces—poker, shovel, tongs, brush and stand. Regularly \$5.00 to \$20.00. Sale prices 2.50 to 10.00 (Fifth Floor.)

Mid-Summer Drapery Values

The Low Prices Are a Strong Inducement to Buying Monday.

- 90c BORDERED SCRIM, 10c YARD.
- Cream centres, pretty borders, all colors, 40 inches wide; any and every room easily suited. Midsummer Sale Price, yard **.19**
- 50c MAQUINETTE, 33c.

A beautiful selection of Fine Marquisettes and Vellies, very daintily colored borders, with plain centres, launders perfectly; an ideal curtaining for the bedroom. Midsummer Sale Price **.38**

\$3.00 BEDROOM BOXES, \$2.48 EACH.

Neatly Upholstered Bedroom Boxes, covered with dainty chintzes and satens, head and fitted with castors. Regularly \$3.50. Midsummer Sale Price **2.48**

AWNINGS AND VERANDAH CURTAINS.

Keep your verandah cool and comfortable with curtains or awnings. Awnings on the drawing-room windows keep everything from fading and the room cool. American and English Striped Duck, best quality, 30 in. wide, yard **.28 and .35**

Measures taken, samples submitted, and estimates given without charge.

SOILED AND OLD SIZED WINDOW SHADES, 10c EACH.

Cream, white and green; samples and soiled shades; nearly all are 36 in. x 70 in., complete with brackets, nails and pulls. Regular value up to 60c each. Clearing Monday **.10**

No phone or mail orders.

BAMBOO VERANDAH SHADES.

About 60, in green only, and in one size only, 4 feet wide by 6 feet long. Regularly 75c each. Monday clearing at, each **.45**

(Fourth Floor.)

Linens--Fourth Floor

Damask Table Cloths, manufacturers' seconds. In the new Linen Section, fourth floor, Monday, we have marked some of these table cloths less than half price. Pure linen damask table cloths, with very slight imperfections; good range of designs, and sizes 2 x 2 1/2, 2 x 3, 2 x 3 1/2, 2 x 4, 2 1/2 x 2 1/2, 2 1/2 x 2 3/4, 2 1/2 x 3, 2 1/2 x 3 1/2, 2 1/2 x 4 yards. Regularly \$4.00 to \$6.50. Sale price, Monday **2.50** (No Phone or Mail Orders for Table Cloths.)

- 20c Circular Pillow Cotton, 15c yard. Firm English make, 44 inches wide. Regularly 20c. Sale price, Monday, yard **.15**
- Fine English Nainsook, 36 inches wide. Sale price Monday, 12 yards for **1.19**
- Heavy All-linen Crash Roller Towelling, 17 1/2 inches wide. Regularly 18c and 20c yard. Sale price Monday, yard **.14**
- Pure Linen Huckaback Bedroom Towels, spoke-hemstitched hems. Sale price, Monday, pair **.48**
- Plain Bleached Sheet, strongly woven and free from filling, 70 inches wide. Regularly 30c and 32c yard. Sale price Monday, yard **.23**
- Gray Union Wool Blankets, very serviceable for the camp or summer home, 7 lbs. weight, size 60 x 80 inches. Sale price Monday, pair **.74**
- 3,500 yards of Unbleached Canton Flannel, with a nice, soft napping. Sale price Monday, yard **.74**

(Fourth Floor.)



Saturday Morning's Values in Men's Hats

This morning we will offer 100 only Men's Panama Hats, in medium large shapes, fine quality, even close weave, and extra well trimmed and finished; dressy and popular shapes. Just 400 hats in this lot, and Saturday's early buyers can select \$4.00 values here while they last for **1.95**

MEN'S STRAW BOATER HATS

in extra fine American and English manufacture, finest of senitis and split braids, in dressy shapes; high and medium crowns, smooth and saw edge brims, fine black silk bands; every hat in the lot a \$2.00 and \$2.50 value. Sizes 6 1/2 to 7 3/8. Saturday's 8.30 rush special, your choice for **.95**

MEN'S STRAW BOATER HATS

in Japanese-Yeddo braids; cool, comfortable, and lightest-straw hat made; new shape and well finished. Regular price \$1.50. Saturday **.79**

MEN'S PANAMA HATS

in all the new and most popular 1914 shapes, specially good qualities and well finished hats; exceptionally good values. Saturday at **2.75, 3.75 and 4.75**

MEN'S CAPS

in fine qualities of tweeds, worsteds, serges, etc., new English and American golf shapes, medium or light weights, lined or unlined, at **.45, .75 and 1.00**

MEN'S YACHT SHAPE CAPS

in fine navy beaver cloth, medium or full crowns, fine black leather peaks, and black braid bands, at **.50, .75, 1.00**

OUTING HATS

in white duck, or in felt, in white, gray, navy, cardinal and mottled colors. Special at **.35** (Main Floor)

Boys' Wash Suits \$1.00

At \$1.00, a splendid range of Russian Wash Suits, with sailor, Dutch or military collars; belts, and elastic bottom bloomers. Wide range of fabrics, including stripes, in blue and white and tan and white; also plain natural linens and fine English white duck. Sizes 2 1/2 to 6 years. Monday **1.00**

Boys' Semi-Middy Russian Wash Suits, single-breasted, with wide sailor collar, belt and elastic bottom bloomers; made from linen-finished duck. Extra blue duck sailor collar and cuffs, trimmed with white braid. Sizes 2 1/2 to 6 years. Monday **1.75**

Boys' Khaki Norfolk Suits, smart single-breasted style, with box pleats to shoulder, and belt; full cut bloomers. Strongly tailored. Sizes 6 to 14 years. Monday **2.25** (Main Floor)

Men's Suits, Regular \$18, \$20, \$22, \$22.50, to Clear \$15.00

We are clearing the broken lines from regular stock of high-grade Suits, every garment the tailor's finished product. Fine English worsteds in plain grays and blues, with narrow thread stripe, also a number of good quality plain blue suits of medium twill. They are cut in the new single-breasted sack style. The vest is single-breasted, and trousers of the newest design. Fine linings. Sizes 34 to 44. To clear at **15.00**

SALE OF MEN'S TROUSERS AT \$1.49

These trousers are made from English tweeds, in grays and browns, in the new shades and attractive patterns. They are neatly tailored and good fitting. Sizes 32 to 44 waist. Special **1.49**

OUR GREAT VALUE WATERPROOF COAT AT \$10.00

Choice coats from one of the best manufacturers of waterproof coats, in Raglan and motor styles. They represent a saving of a number of dollars on each garment. Made from English double texture paramatta cloth, in fawn shade. Very carefully tailored. Sizes 34 to 46. Monday **10.00**

Men's Woolen Underwear

Several lines which we are showing at reduced prices have the size ranges somewhat broken.

MEN'S SHIRTS AND DRAWERS

The makes are Wolsey, Flying Wheel, Body Guard, Stralian and Penman's; summer weight only. Sizes in the lot 34 to 46. Regularly \$1.25, \$1.50 and \$1.75. Monday, a garment **1.00**

COMBINATIONS

Wolsey, Stralian, Lindsey, Body Guard, Tan Knit, all have long sleeves and ankle length; sizes in the lot 34 to 44. Regularly \$3.00 and \$3.50. Monday **2.50**

MEN'S MUSHROOM PLEATED SHIRTS

150 Splendid Quality Shirts, from the best Canadian makers. Several different colors, double soft cuffs, best quality pearl buttons. Sizes 14 to 17. Regularly \$2.50. Monday **1.89**

MEN'S SHIRTS TO CLEAR AT 89c

Laundered or double soft cuffs, a few with the attached reversible collar, or pleated bosoms; all cut coat style with the exception of the reversible collar shirts. All sizes in the lot. Regularly \$1.00, \$1.25 and \$1.50. Monday **89c** (Main Floor)

3-Day Sale of Open Stock Dinner Ware

Maddock's well-known semi-porcelain, "Dorothy" pattern, a dainty border design, in Canton blue coloring, pattern being under the glaze, cannot be washed off; hard, durable body. Reduced to very low prices for three days' selling:

- Bread and Butter Plates. Regularly 90c dozen. Special Sale price, dozen **.69**
 - Tea Plates. Regularly \$1.10 dozen. Special Sale price, dozen **.85**
 - Breakfast Plates. Regularly \$1.45 dozen. Special Sale price, dozen **1.05**
 - Dinner Plates. Regularly \$1.65 dozen. Special Sale price, dozen **1.19**
 - Soup Plates. Regularly \$1.45 dozen. Special Sale price, dozen **1.05**
 - Fruit Saucers. Regularly 65c dozen. Special Sale price, dozen **.47**
 - Oatmeal Saucers. Regularly \$1.25 dozen. Special Sale price, dozen **.79**
 - Tea Cups and Saucers. Regularly \$1.85 dozen. Special Sale price, dozen **1.35**
 - Platters, 10-inch. Regularly 35c. Special Sale price **.25**
 - Platters, 12-inch. Regularly 55c. Special Sale price **.41**
 - Platters, 14-inch. Regularly 80c. Special Sale price **.60**
 - Platters, 16-inch. Regularly \$1.20. Special Sale price **.89**
 - Salad Bowls. Regularly 45c. Special Sale price **.29**
 - Sauce Boats. Regularly 30c. Special Sale price **.21**
 - Pickle Dishes. Regularly 25c. Special Sale price **.19**
- (Basement)

Parlor Furniture Specially Priced

Parlor Settee, one only, in mahogany finish, carved claw feet, well upholstered seat and back. Regularly \$18.75. Special selling **13.50**

One Only Settee, in mahogany finish, has neatly-designed arms and back, spring seat, upholstered and covered in silk tapestry. Regularly \$20.00. Special selling **15.00**

One Only Parlor Settee, frame is made of selected mahogany, dull finish, well upholstered seat. Regularly \$37.50. Special selling **28.75**

Parlor Chairs, made of solid mahogany; the seats are well upholstered and covered in green striped denim. Regularly \$6.90. Special selling **4.90**

Parlor Suite, in mahogany finish; the back rails and panels are veneered in genuine mahogany; have spring seats, covered in silk tapestry. Regularly \$24.00. Special selling **21.00**

Parlor Suite, the frames are made in mahogany finish. This suite consists of settee, arm chair, and small chair. The seats, arms and backs are finely upholstered and covered in green silk tapestry. Regularly \$82.00. Special selling **63.50** (Fourth Floor)

BASEMENT ITEMS FOR SIMPSON'S MONDAY SALE

WHITE GRANITEWARE

New, First Quality White Granite Ware at about half the usual prices.

(We cannot promise to fill phone or mail orders.)

Table No. 1—Pudding pans, oblong pans, oval pans, round bowls, wash bowls and mugs. Regular values up to 20c. Monday basement sale **.12**

Table No. 2—Round pudding pans, oblong pudding pans, oval pans, wash bowls, round bowls, etc. Regularly 5c. Monday basement sale **.19**

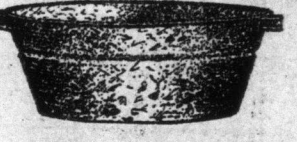
Kitchen Items—Galvanized

Garbage Cans, with ball handles and fit-over covers, in three sizes:

- Regular 65c size. Monday's basement sale **.54**
- Regular 75c size. Monday's basement sale **.64**
- Regular 95c size. Monday's basement sale **.80**

Galvanized Wash Tubs, in four sizes:

- Regular 55c size. Monday's basement sale **.44**
- Regular 67c size. Monday's basement sale **.54**
- Regular 75c size. Monday's basement sale **.64**



Galvanized Wash Boilers to fit Nos. 8 or 9 stoves. Regularly \$1.00. Monday basement sale **.88**

Tin Oval Rinsing or Foot Tubs. Regularly 30c. Monday basement sale **.23**

Tin Wash Boilers, in Nos. 3 or 3 1/2, with copper bottoms. Regularly \$1.25. Monday sale **.81**

45c and 55c House Brooms, 30c—500 only House or Carpet Brooms, of full, long corn, four or five string sewn. Regularly sold for 45c and 55c. Monday basement sale **.30**

Zinc-faced Washboards, best quality. Regularly 25c. Monday basement sale **.19**

65c House Stepladders, 4-foot high. Monday basement sale **.48**

85c House Stepladders, 5-foot high. Monday basement sale **.58**

50 Best Quality Mop Handles. Monday basement sale **.42**

4.00 WRINGERS, \$2.98

New shipment of Clothes Wringers on sale Monday, enclosed roller coverings for protection of hands; made by one of the best Canadian manufacturers, galvanized fittings throughout, spiral spring, easy of adjustment. Regularly \$4.00. Monday's sale **2.98**

- Galvanized Clothes Line Wire, 100 feet. Regularly 55c. Monday **.20**
- Galvanized Clothes Line Wire, 50 feet. Regularly 28c. Monday **.13**
- Cotton Clothes Lines, 50 feet. Monday basement sale **.14**
- Waterproof Cotton Lines, 75 feet. Monday basement sale **.12**
- Hand-laid Cotton Lines, 100 feet. Monday basement sale **.64**
- Hand-laid Manilla Lines, 50 feet. Monday basement sale **.32**

CEDAR OIL MOPS, 70c

An oil mop for cleaning, disinfecting and polishing hardwood floors, linoleums, etc., either in orange or black. Monday basement sale **.78**

WILLOW CLOTHES BASKETS

Clean, strong, Willow Clothes Baskets, with woven sides, regularly \$5 and 6.50. Monday basement sale **.49**

15c CLOTHES PROPS FOR 12c

Long and clean wood. Regularly 15c. Monday basement sale **.12**

CLEARING LAWN MOWERS

Clearance of these new, keen-cutting mowers, first quality:

- \$3.85 Lawn Mowers, 3 blades. Monday's basement sale **3.41**
- \$4.15 Lawn Mowers, 3 blades. Monday's basement sale **3.73**
- \$5.25 Lawn Mowers, 4 blades. Monday's basement sale **4.83**
- \$5.50 Lawn Mowers, 4 blades. Monday's basement sale **5.18**

Grass Plot or Lawn Trimmers. Monday basement sale **23c, 41c, 50c.**

Garden Trowels, with steel blades. Monday basement sale **.3**

GARDEN SPADES AT 47c

Balance of these Good Quality Solid Steel "D" Handle Spades. Regularly 75c and 85c. Monday basement sale **.47**

DOME BREAD TOASTERS

500 Dome Toasters that will toast four pieces of bread at once. Monday basement sale, 14c and 24c.

PINEAPPLE EYERS, 12c

That will take the eyes clean out of fruit. Regularly 15c. Monday basement sale **.12**

GAS STOVE DEPARTMENT

An overstock clearance of these absolutely new goods, in perfect condition:

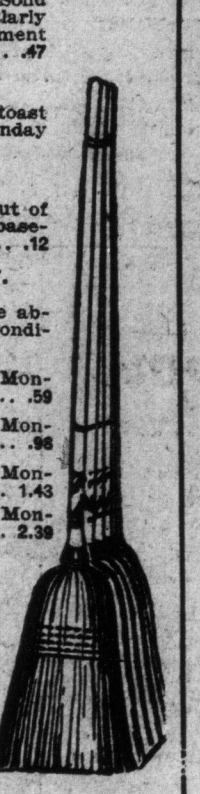
- 1-burner size. Regularly 75c. Monday's sale **.59**
- 2-burner size. Regularly \$1.15. Monday's sale **.86**
- 3-burner size. Regularly \$1.75. Monday's sale **1.43**
- 3-burner size. Regularly \$2.75. Monday's sale **2.38**

GAS OVENS

Bright Tin Gas Ovens, asbestos lined, to be used in connection with above gas plates. Regularly \$1.00. Monday's sale **.59**

GAS TUBING

Cloth covered, rubber connections, first quality Gas Tubing. Monday sale, per foot **.4**



Grocery List For Monday

- Finest Golden Cornmeal. Per stone **.38**
- Choice Picnic Hams, 6 to 8 lbs. each. Per lb. **.16**
- Upton's Marmalade. 5-lb. pail **.45**
- Pure Cocoa, in bulk. Per lb. **.24**
- English Marrowfat Peas. 3 packages **.25**
- Quaker Oats. Large package **.23**
- Canned Haddie, Brunswick brand. Per tin **.11**
- Fancy Japan Rice. 3 1/2 lbs. **.25**
- Wax Candles. Per dozen **.12**
- Choice White Beans. 3 1/2 lbs. **.25**
- Canned Apples, gallon size. Per tin **.25**
- Spratt's Puppy Biscuits. Package **.19**
- Red Lentils for soup. 3 lbs. **.25**
- Old Dutch Cleanser. 4 tin. **.25**
- Ammonia Powder. 4 packages **.25**
- Sunlight and Surprise Soap. 4 cakes **.25**
- Comfort and Taylor's Borex Soap. 6 cakes **.25**
- Simpson's Big Bar Soap. Per bar **.10**
- 5 LBS. PURE CELONA TEA. **1.15**
- 1000 lbs. Pure Celona Tea of uniform quality and fine flavor, black or mixed. Monday, 5 lbs. **1.15** (Basement.)

The Robert Simpson Company, Limited