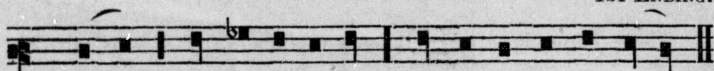


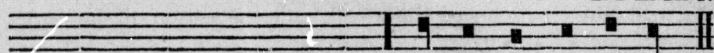
GREGORIAN CHANTS FOR CANTICLES AND PSALTER.

TONE I.

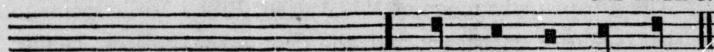
1ST ENDING.



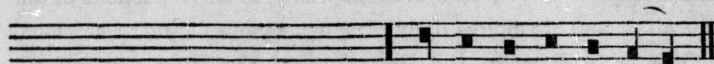
2ND ENDING.



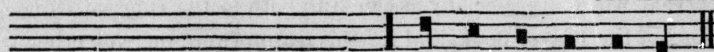
3RD ENDING.



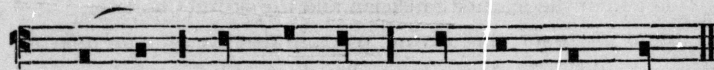
4TH ENDING.



5TH ENDING.

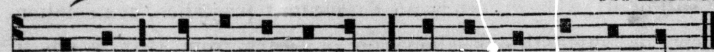


TONE II.

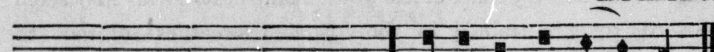


TONE III.

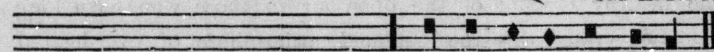
1ST ENDING.



2ND ENDING.

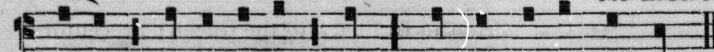


3RD ENDING.



TONE IV.

1ST ENDING.



2ND ENDING.

