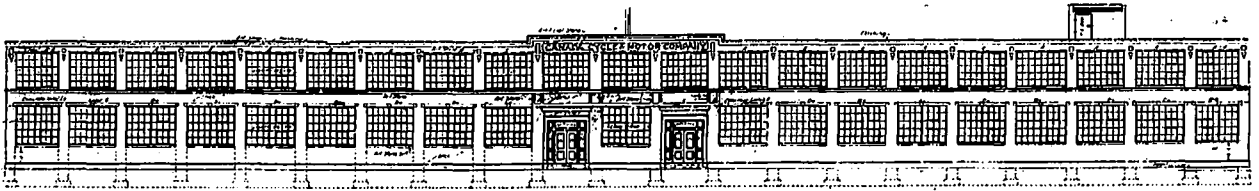


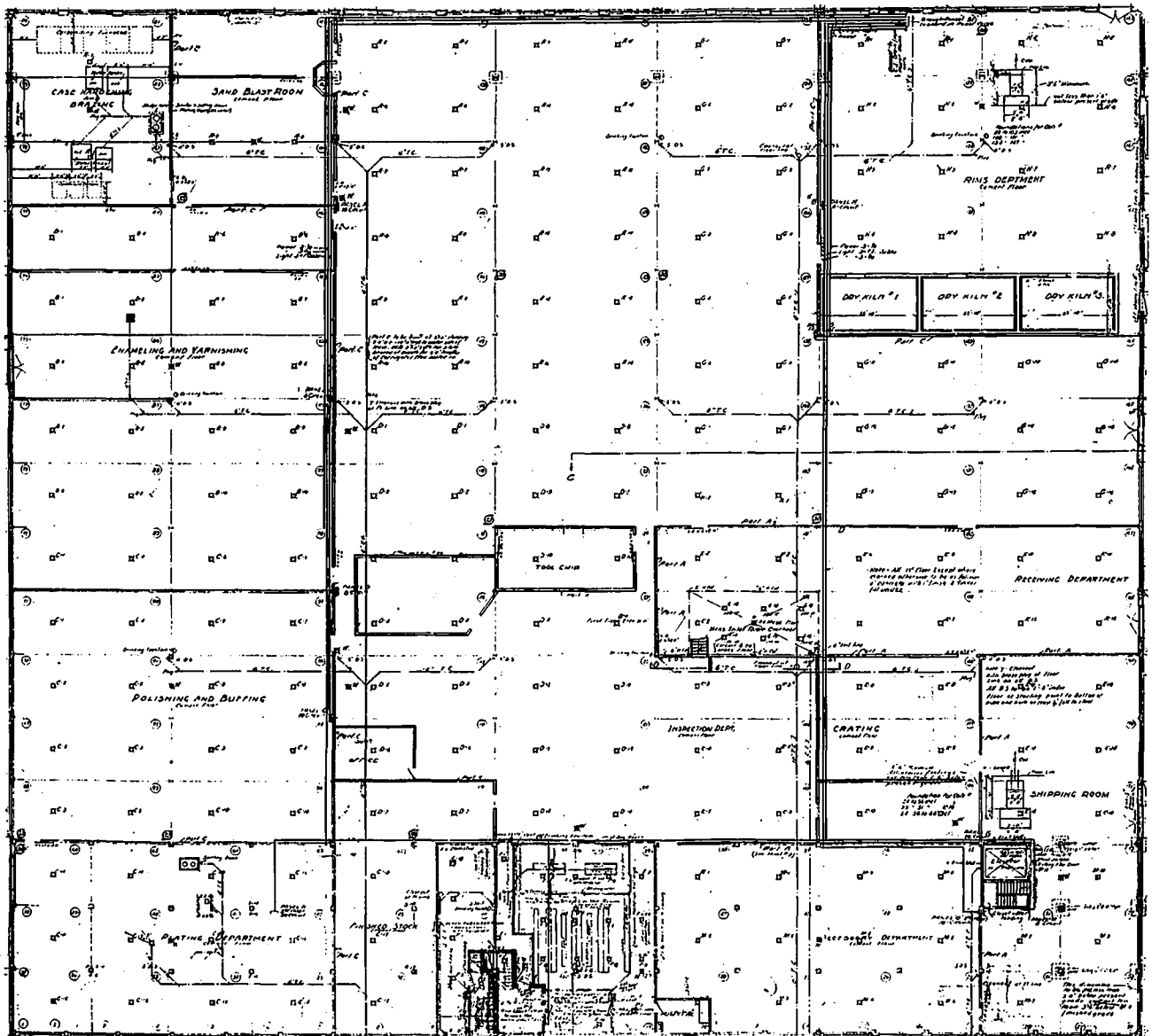
REAR ELEVATION, CANADA CYCLE AND MOTOR COMPANY'S PLANT, WESTON, ONT.



FRONT ELEVATION, CANADA CYCLE AND MOTOR COMPANY'S PLANT, WESTON, ONT.

metal sash of the windows extending from the sills to the eaves. The roof is of two and three-quarter-inch tongue and groove sheeting on six by ten-inch rafters, being supported by the steel trusses previously mentioned. Drainage is carried through interior down-pipes and outside eaves. The floor of the factory is of four-inch concrete on a two-inch cinder base, with a one-inch cement coat finish.

The power house forms a separate unit, and is approximately thirty by sixty-two feet in dimensions, with a stack one hundred and twenty-five feet high and five feet six inches in diameter at top. The walls are of brick, and the roof is carried on wall-bearing steel sections. Two return tubular boilers of three hundred horse power capacity are at present installed, and provision is made for the addition of two simi-



GROUND FLOOR PLAN, CANADA CYCLE AND MOTOR COMPANY'S PLANT, WESTON, ONT.