

Architects! Draftsmen! Engineers!**"CHIN-CHIN" LIQUID PEARL INK (BLACK)****"PELICAN" LIQUID DRAWING INKS (17 COLORS)**

Are the Standard Waterproof Liquid Drawing Inks and extensively used by professional draughtsmen throughout the civilized world.

AN ARCHITECT IN MONTREAL WRITES:*"I received your 'Chin-Chin' and 'Pelican' Drawing Inks and found same satisfactory in every respect. I find it economical in time, superior in quality, consequently cheaper in every way."*

Particulars from the manufacturer or his Depots: The Art Metropole, 1494 Yonge Street, Toronto, Ont.; The Thomson Stationery Co., 325 Hastings Street, Vancouver; The Hughes, Owens Co., Limited, 587 St. Paul Street, Montreal.

Sole Manufacturer and Inventor

Günther Wagner, 80, Milton Street, London, E. C., Eng.**...Glass Painting...
Memorial Windows****McKENZIE'S STAINED GLASS WORKS**

8 AND 10 MAIN STREET EAST

Church and Domestic. Hamilton, Ont.
Ornamental Glass
Original Designs made to suit all classes of work.**ART GLASS WORKS**

ESTABLISHED 1876.

Memorial Church Windows,
Geometrical and Quarrie Windows,
Art Glass for Residences, etc.

Send for designs and prices to

H. HORWOOD & SONS PRESCOTT, ONT.
and Ogdensburg N.Y.
400 and 402 Bank Street, - OTTAWA.

**BEAMSVILLE
BRICK
& Terra-Cotta Co.**

Shrinkage
A Peerless Pressed Brick of all forms and
Colors required **RED BROWN BUFF**

Prompt Delivery **HEAD OFFICE & WORKS**
BEAMSVILLE, Ont.
GEORGE CRAIN, Proprietor

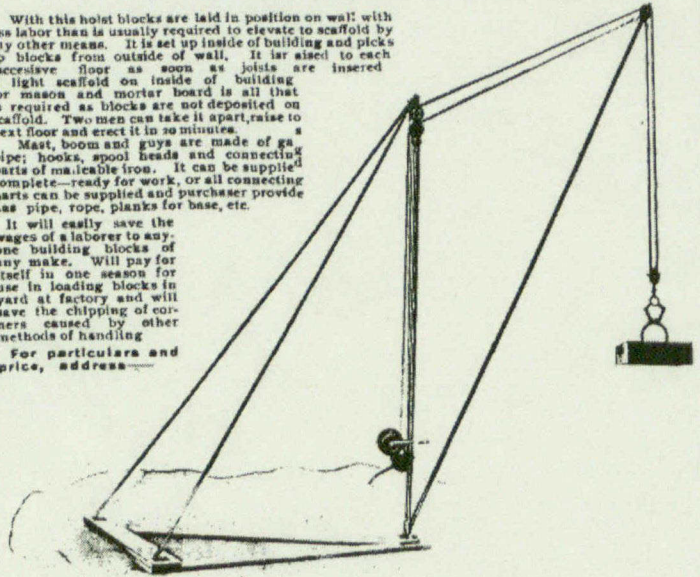
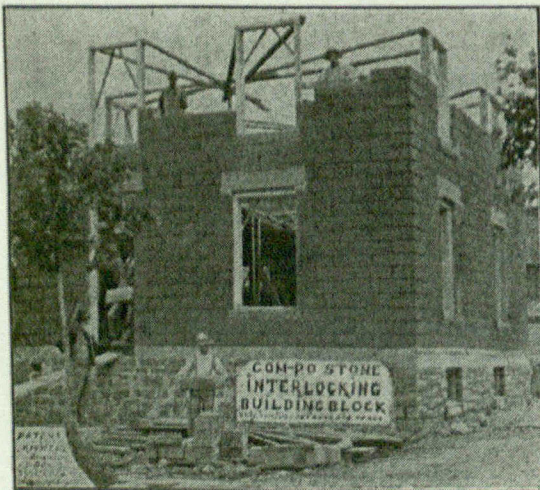
Please mention CANADIAN ARCHITECT
AND BUILDER when correspond-
ing with Advertisers.**THE BUILDERS' GRANE**A great labor saver. A simple, handy, light, strong and easily
erected Hoist for laying Cement Blocks.

With this hoist blocks are laid in position on wall with less labor than is usually required to elevate to scaffold by any other means. It is set up inside of building and picks up blocks from outside of wall. It is also used to each successive floor as soon as joists are inserted. A light scaffold on inside of building for mason and mortar board is all that is required as blocks are not deposited on scaffold. Two men can take it apart, raise to next floor and erect it in 30 minutes.

Mast, boom and guys are made of galvanized pipe; hooks, spool heads and connecting parts of malleable iron. It can be supplied complete—ready for work, or all connecting parts can be supplied and purchaser provide gas pipe, rope, planks for base, etc.

It will easily save the wages of a laborer to any one building blocks of any make. Will pay for itself in one season for use in loading blocks in yard at factory and will save the chipping of corners caused by other methods of handling.

For particulars and price, address—

**MGNALLY & PLUMMER, MANUFACTURERS, BLYTH, ONT.****Com-Po Stone
INTERLOCKING
BUILDING BLOCK**

THE ONLY CONCRETE Building Block forming continuous "dead air" space (or hollow) wall, the entire length of the wall, including angles. Well "bonded" in wall. Warm in winter, Cool in summer. FIRE, FROST, and WEATHER proof. EASY to build, having all the facilities of brick or stone work, for bedding plates sills and bond timber, for joists, &c. IRRESPECTIVE of face work. EASY to manufacture, no expensive machinery being required. Profitable to user and producer.

If a PARTIAL air space in a wall is beneficial (in any way), the WHOLE, or a continuous air space, must be MORE so.

Com-Po Stone is rendered more DURABLE and TENACIOUS than ordinary concrete by the use of M F Chemical Compound—a cheap and profitable mixture to use in all concrete construction (at a cost 50 cents per cubic yard.)

Special plans and estimates prepared, for all concrete structures, by

G. T. Martin, Architect,

Smiths Falls - Ontario

Patent Rights and Chemical Compound for Sale