

surrounding the homes of the more wealthy residents.

Victoria owns its own waterworks and street electric lighting plants and a fire department is maintained of fifteen permanent and eighteen call men. It has free library and good school system. There are three hospitals; the Royal Jubilee having been erected in honor of Her Majesty's jubilee. Electric street cars run along the principal streets, taking in also Esquimalt, Beacon Hill, Oak Bay and other points of interest in the suburbs. Besides the regular steamships running to Vancouver and the other ports along the coast both of Canada and the United States, there are also two lines of railway, the Victoria and Sidney railway being a short line to Sidney, and the Esquimalt and Nanaimo railway running from Victoria to Wellington, the latter a mining town five miles past Nanaimo.

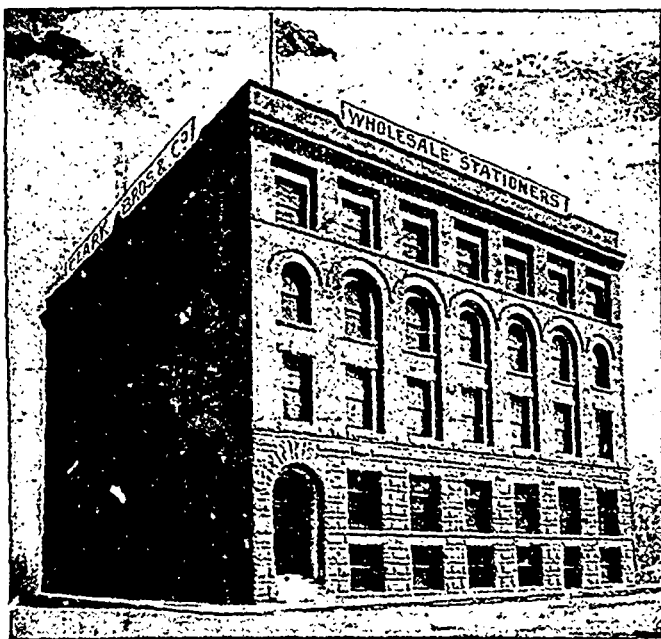
From a commercial standpoint Victoria ranks high among our Canadian

enced in getting sufficient vessels to handle the output. This lumber is sent to almost all parts of the world.

Esquimalt, about three miles west of Victoria, is the British naval port on the north Pacific and here large sums of money have been spent in works of defence. The arsenal contains large quantities of stores and ordnance supplies. There are usually one or more war vessels here, a visit to which will be found very interesting. All kinds of repairing to ships is done here and the dry dock is of sufficient size to hold the largest ship, it being 150 feet long, 27 feet deep with a 55 feet entrance.

#### Clark Bros. & Co.

A Commercial representative called this week upon Clark Bros. & Co., wholesale stationers and paper dealers, in their new warehouse on the corner of King and Bannatyne streets, and was shown over the



Clark Bros. New Warehouse.

cities. It is the capital of British Columbia and was for a long time the only place of importance here, but since the construction of the C. P. R. and the opening up of this province Vancouver has come to claim a share of the trade. There is, however, sufficient business for both places and trade reports show a substantial yearly increase in the volume of business done here. Almost every line of business is represented by two or more firms doing a wholesale business, and a visit to their warerooms and to the wharves where the ships are being loaded or unloaded will give some insight into the amount of goods handled. The customs statistics for 1899 show a total of \$961,980 of imports and \$1,734,930 exports, as against \$896,838.11 imports and \$1,082,750 exports for the previous year.

Victoria has also a large number of manufacturing industries, such as the Albion iron works, saw and planing mills, flour mill, breweries, cigar factories, biscuit and candy factory, shoe and fruit preserving works, etc. Then, too, a large revenue is derived from the fishing, lumber and mining industries. The lumber interests of Vancouver Island are very great, so great in fact that difficulty is experi-

ences. The building in which they have located is the new one recently built for The Gault Bros. Company of Montreal, who share it with Clark Bros. This is one of the most commodious and modern wholesale warehouses in Winnipeg, and is situated in the heart of the wholesale quarter. Clark Bros. have four floors, including the basement, 50x90 feet, in dimension. These floors are all splendidly lighted and fitted up and are connected with each other and with the packing room by two electric hoists. Communication is maintained by a complete system of speaking tubes and telephone. The basement is devoted to the storage of heavy papers, such as wrappers, bags, etc., and also contains the packing room, furnaces, lavatory, etc. On the ground floor the offices are located and also the store room for flat papers, printer's supplies, etc. On the second floor the stock of stationery is kept and this is fully equipped with shelving, tables and display devices. The third floor is reserved for fancy goods, toys, celluloid goods and as a sample room.

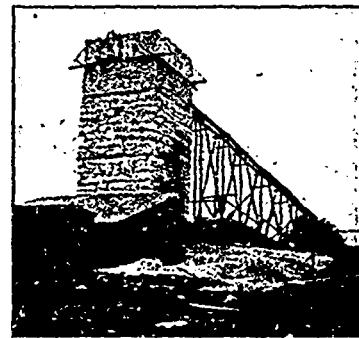
The firm of Clark Bros. & Company are well known to the stationery and paper trade of the west and their

many friends will be pleased to hear that the business is expanding so as to make necessary such splendid facilities as this new warehouse affords. They have made a special effort to get in and settled before exhibition week and have issued a special invitation to all country merchants to call on them in the city at that time. An engraving of the new premises is shown herewith.

#### Along the Stonewall Branch.

The Stonewall section of the C. P. R. as extended, now reaches forty miles north from Winnipeg, and touches at four towns, Stony Mountain, Stonewall, Balmoral and Teulon. From Winnipeg to Stony Mountain the country is open prairie, and but thinly settled, although of late some steps have been taken towards having these lands placed on the market. After passing Stony Mountain the land becomes more wooded and a large proportion of it has been under cultivation for a number of years. The large groves of trees besides serving as shelter and furnishing the winter's supply of fuel, also add greatly to the beauty of the landscape, making this section a very pleasant place of abode. The farmers living here are, for the most part, well-to-do, and their neat and substantial looking dwellings and outbuildings surrounded by trees and well cultivated fields, present some very pretty pictures.

Near Stony Mountain station, which is fourteen miles from Winnipeg, the buildings of the Manitoba Provincial jail are situated on the top of the hill constituting the mountain. A large stone wall to surround the jail has been under construction for some years, the work being done principally by the prisoners. It is from this hill that a large proportion of the building stone used in Winnipeg is obtained. There is a small



John Gunn's Lime Kiln, Stonewall, Man.

town here, containing one general store, owned by John Gunn, who also is largely interested in several of the stone quarries and lime kilns, both here and in Stonewall.

Stonewall, which is the next station, also ships out large quantities of lime and stone, and as it has, in addition, a good farming community surrounding it, a good business is done by the different merchants, among whom S. O. Bailey, W. J. Bruce, C. M. Brown, I. Riley, R. Johnston, W. J. Wright, G. Musgrove, E. A. Shave, Wm. Last, J. W. Fullbrook, and the Stratton Bros. Co. figure prominently. There are about a dozen lime kilns and four stone quarries here, which give employment to a goodly number of men.

John Gunn this spring completed a large draw kiln which will burn from four to five hundred bushels of lime