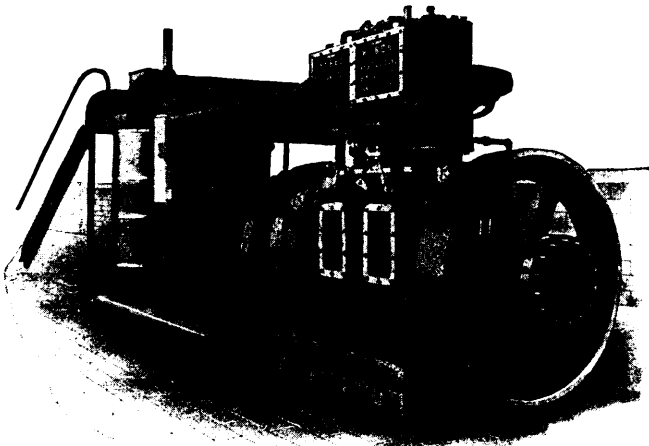


# WEBER PRODUCER GAS POWER PLANTS

SAVE 50 PER CENT. TO 75 PER CENT. OF YOUR FUEL COST!



Complete Gas Engine and Producer Plant.  
Sizes to 1000 H. P.

1 HORSE POWER  
1 HOUR  
1 POUND COAL

**WEBER GAS ENGINE CO.**  
BOX 411, KANSAS CITY, MO.

**FUELS:**  
ANTHRACITE COAL,  
COKE, CHARCOAL

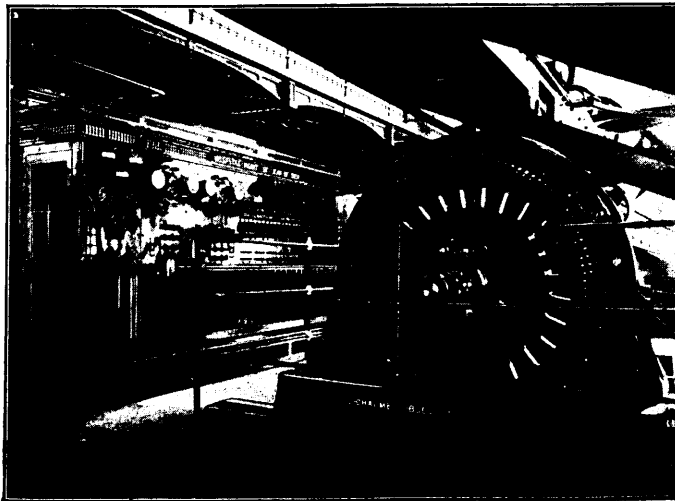
**RESULTS**

FAIRVIEW, Okla.,  
Jan. 5, 1906.

Our 50 H.P. Weber Suction Gas Producer and Weber Gas Engine has proven to be all you claimed and has fully met your guarantee. We have run our Mill at a capacity of 80 bbls. per day, on a fuel consumption of 40 lbs. of semi-anthracite coal per hour. Our steam plant, which we discarded for the Gas Engine, was very expensive to operate. Our saving is far beyond our expectations: we keep accurate account of our power cost, both steam and gas, and our fuel cost is now reduced 75 per cent. Yours truly,  
FAIRVIEW MILLING CO.

**COUNT**

# ALLIS - CHALMERS - BULLOCK LIMITED



One of our 80 K. W. Belted Alternating Current Generators and Auxiliary Apparatus Forming the Lighting Plant of the Hospital Mont St. Jean de Dieu, Montreal.

“Allis-Chalmers” Mining, Saw Mill and Flour Mill Machinery, Engines, Pumps and Turbines.

“Bullock” Electric Apparatus.

“Ingersoll” Air Compressors, Rock Drills and Coal Cutters.

“Lidgerwood” Hoisting Engines.

Head Office and Works

**MONTREAL**

**District Offices**

TORONTO - 810 TRADERS BANK BUILDING.  
WINNIPEG - 251 NOTRE DAME AVE.  
NELSON - JOSEPHINE ST.

MONTREAL - 82 SOVEREIGN BANK BUILDING.  
VANCOUVER - 416 SEYMOUR ST.  
NEW GLASGOW - N.S. TELEPHONE BUILDING.