

VENNOR'S



WEATHER

BULLETIN

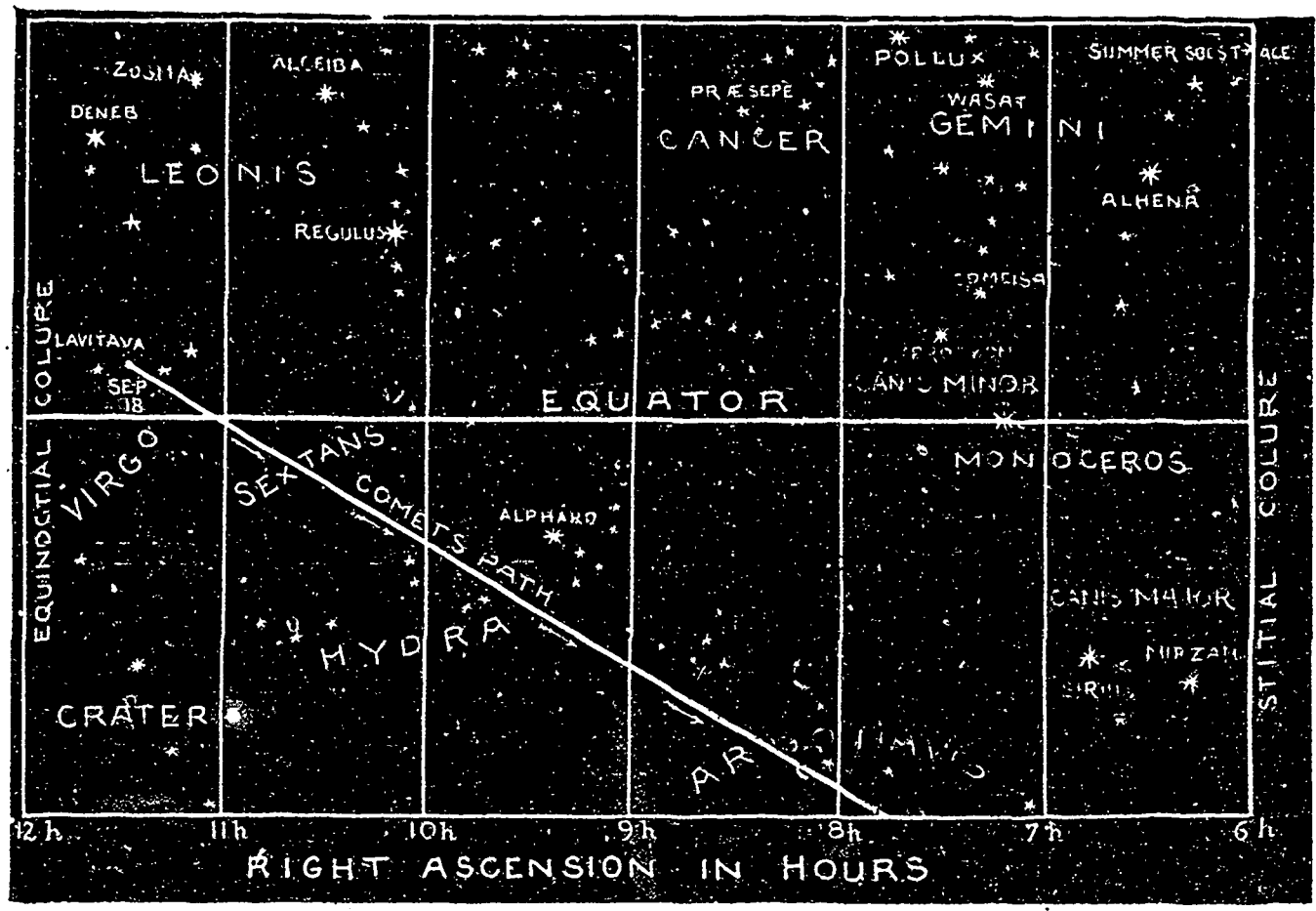
FOR CANADA AND

THE UNITED STATES.

A PAPER DEVOTED EXCLUSIVELY TO THE WEATHER AND ALLIED TOPICS.
 "Study the Past if You would Divine the Future."

Vol. I.—No. 10.

MONTREAL, NOVEMBER, 1882.



"The Path of the Comet."

11th Month.	30 Days.	The Comet.		
NOVEMBER.				
1 to 5—	A good amount of rain probable with a frosty snap about the 3rd or 4th and scattered snow flurries through western and northern sections.	If you could find room for the accompanying diagram of the comet's path among the constellations it would probably interest your readers. Drawn by myself from a reliable star chart, with careful noting of positions, as telegraphed from observations in both Old and New World. Of course it is liable to correction, as I am without instruments for measuring right ascension and declination. The train at present appears to pass near Alphard in Hydra, this is due to its relative position to the sun. The motion is through the constellations Sextans, Hydra and the ship Argo in South Declination. WALTER H. SMITH.	at St. Louis. Cold in North West, cold and stormy Scotland and England. 13th and 19th very stormy weather and snow falls general.	
5 to 12—	The neighborhood of the 7th probably stormy with rain, sleet or snow, also 11th and 12th we. and dreary.		19 to 26—	A wintry week generally. Cold snap due about 20th and 21st. Frosts far to the Southward, neighborhood of 24th and 25th snow storms, and in Newfoundland gulf gales.
12 to 19—	Probably fair in most sections up to 14th or 15th. After these dates very stormy weather, with heavy snow falls, will prevail over a large portion of the United States and Canada. Snow probable in Arkansas and Missouri, storms		26 to 30—	High winds in Northern sections entry of week. Storms Scotch coast and generally on Atlantic. Cold weather in North West, winter weather in Canada. Stormy up to end of month on Atlantic. Prevalent winds North Westerly and Westerly.