

C H E S S .

(To Correspondents.)

F. W. S.—Your Solution to the Indian Problem is the correct one. We will withhold it another month.

AMY.—The best three move problem is by the Rev. Mr. Bolton. We shall give it insertion in our next, if possible.

Solution to Problem in HOW A WORLD WAS WON, by a Subscriber, J. B., and J. H. R. are correct.

Solution to No. 18, the INDIAN PROBLEM, by F. W. S., J. B., and J. H. R. are correct.

Solutions to Enigma in our last by G. P., Amy, and F. W. S. are correct.

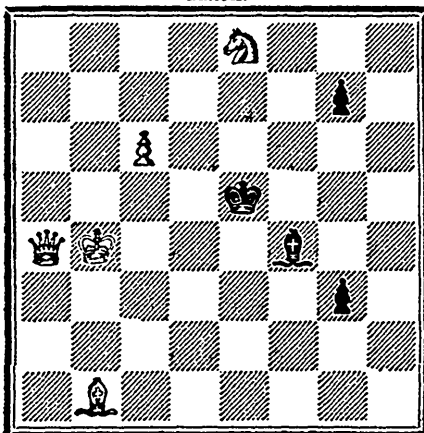
SOLUTION TO PROBLEM IN HOW A WORLD WAS
WON. Page 440.

- | | |
|------------------------|---------------|
| <i>White.</i> | <i>Black.</i> |
| 1. R to K Kt 8th (ch). | R takes R. |
| 2. R to K B 8th (ch). | R takes R. |
| 3. K P one (dis ch). | Q interposes |
| 4. B mates. | |

PROBLEM No XIX.

By A. M. S., of Toronto.

BLACK.



WHITE.

White to play and mate in four moves.

ENIGMAS.

No. 52. By M. D'Orville.

WHITE.—K at Q R sq; Q at K R 6th; R at Q B 6th; B at Q Kt 7th; Ps at Q 4th and Q R 3d.

BLACK.—K at Q 4th; Q at Q R 2d; Rs at K R sq, and Q B sq.

White to play and mate in three moves.

No. 53. By the same.

WHITE.—K to his R sq; Q at K R 5th; R at Q B 8th; Kts at Q B 2d, and Q R 4th.

BLACK.—K at Q Kt 6th; Q at her 6th; R at K B 7th; B at Q R 2d; P at Q R 7th.

White to play and mate in three moves.

ANNUAL MEETING OF THE TORONTO CHESS CLUB.

The second annual meeting of the Toronto Chess Club was held at their rooms on the 3rd ult., when the report of the committee was read, detailing the progress of the Club during the past year. We regret to find that, according to this report, which we are unable to give to our readers, on account of its length, that the encouragement received by the Club in the attendance of members is not that we should have expected from a place boasting of so many amateurs in the noble game. In the election of officers, Mr. Cherriman and Mr. Chewett were respectively elected President, and Secretary and Treasurer for the ensuing year; Messrs. Fripp, Crawford and Robertson the Committee. After the business of the evening was over, the members immediately attacked one another over the chequered field, and fought their battles to an early hour.

A GAME BETWEEN MESSRS. S——
AND H——.

White (Mr. H.).

Black (Mr. S.).

- | | |
|------------------------------|----------------------|
| 1. P to K 4th. | P to K 4th. |
| 2. K Kt to B 3d. | Q Kt to B 3d. |
| 3. P to Q 4th. | P takes P. |
| 4. K Kt takes P. | Q to K R 5th (a). |
| 5. K Kt to Q Kt 5th (b). | Q takes P (ch). |
| 6. K B to K 2d. | Q to K 4th. |
| 7. P to K B 4th. | Q to Q B 4th. |
| 8. Kt takes Q B P (ch). | K to Q sq. |
| 9. Kt takes R. | K Kt to B 3d. |
| 10. Q Kt to B 3d. | K B to K 2d. |
| 11. Q to Q 2d. | R to K sq. |
| 12. Q Kt to Q R 4th. | Q to K B 4th. |
| 13. Castles. | Kt to K 5th. |
| 14. Q to Q 3d. | Q to K 3d. |
| 15. K B P one sq. | Q to K B 3d. |
| 16. Q B to K B 4th. | K B to Q 3d. |
| 17. B takes B. | Kt takes B. |
| 18. Q R to Q sq. | Q Kt to his 5th. |
| 19. Q takes Kt. | Q takes Q. |
| 20. R takes Q. | R takes B. |
| 21. P to Q B 3d. | Kt to Q B 7th. |
| 22. P to K B 6th. | P to K Kt 3d. |
| 23. K R to Q sq. | Kt to K 6th. |
| 24. Q R to Q 2d. | R takes K Kt P (ch). |
| 25. Q R takes R. | Kt takes K R. |
| 26. R to K 2d. | P to Q Kt 3d. |
| 27. R to K sq. | P to Q Kt 4th. |
| 28. Q Kt to Q B 5th. | Kt takes Q Kt P. |
| 29. R to K 7th. | P to Q 3d. |
| 30. Kt to Q Kt 7th (ch). | B takes Kt. |
| 31. R takes B. | Kt to Q 5th. |
| 32. R takes K B P. | Kt to K 4th. |
| 33. R takes Q R P, and wins. | |

Notes.

(a) This move is not considered a good one.

(b) This is an ingenious move.