

New Arrivals of Fall & Winter Goods!

We have just received a large shipment of winter goods, consisting of

COATS, DRESSES & SKIRTS

COATS

A gathering of beautiful new styles from which it will be a fascinating delight to select your new fall and winter coat.

DRESSES

A remarkable selection of new models in Canton Crepe, Jacquard Crepe, Satin, Georgette, Crepe-de-Chene, Silk, Serge, Tricotine; all prominently in the foreground of our new fall fabrics. Clearing from **6.75 up.**

SKIRTS

A large assortment of Pleated, Plaid and Serge Skirts in very pretty shades and newest styles.

Our aim is to give you the most of the best for the least expenditure, to maintain the established standard of our values.

A STORE DEVOTED EXCLUSIVELY TO LADIES

Quality Merchandise
at the Right Price.
SEE US FIRST.

English-American Clothing Co.

Our New Large Fall Stock enables us to give you **EFFICIENT SERVICE.**

314 WATER STREET

Engineering Wonders at Wembley.

Wide Range of Inventions For The Empire Exhibition-- Press-the-Button Era.

The most up-to-date and representative assembly of machinery that the world has ever seen will be shown at the British Empire Exhibition in 1924. Hundreds of thousands of pounds worth of 20th century inventions and craftsmanship will be on view. At the invitation of the Executive Council of the Exhibition, the British Engineers' Association and the British Electrical and Allied Manufacturers' Association have consented to organize and arrange all the exhibits of electrical, general, and marine engineering, and the ablest men in these industries are now applying their minds assiduously to this stupendous task. Shipbuilding improvements are sure to play a part worthy of an Empire of great mariners. Latest developments in ship-construction and marine engineering will be displayed. Visitors will be able to see how the oil in modern oil-burning ships is distributed from the tanks to the burners beneath the boilers. Side by side, the most recent steam-turbines and the marine-type Diesel oil-engines will be shown, and the power system of the all-electric ship will be compared with both.

FROM HAND-DRILL TO POWER WAVE.

Colliery and other mining appliances of every description will be shown. Scarcely more than a quarter of a century ago, our quarrymen, our coal, tin and copper miners, were working with hand-drills to bore the holes for their shot-firing. Wembley, with its novel displays of rock, slate and stone cutting by means of compressed air, electric motors and on the new wave-transmission system, will reveal to the multitude the revolution quietly brought about by our modern scientific power appliances. Light railway engineering is another section in which many modern improvements

will be demonstrated. All the latest types of locomotives, both steam and electric, the latest cranes, lifts and overhead transmitters, signalling inventions, bridge work and permanent way improvements, will provide a complete summary of modern transport developments in all parts of the Empire. Visitors will see also textile machinery of every modern character, appliances used in the wool, cotton, printing, paper, chemical, dyeing, pottery and glass making industries and all classes of agricultural machinery. Perhaps development in no section of engineering is so rapid and continuous as in electric plant appliances. In this section Wembley's display will include the latest achievements in the turbo-alternator design, in switch gear, transformers, storage batteries, and plant used in connection with the generation, conversion and distribution of electrical energy on an enormous scale. Some of these will be at work on the spot, serving a useful purpose within the exhibition.

HOMES MADE HOMELY.

But it is not only the inventions for use in factory, mine and navigation that the great Empire Exhibition will reveal. There is the home side—the side that appeals most to the womenfolk; and this "twilight and button" side is the only one of the thousand features of the exhibition in which women will be specially interested. Electric labour-saving devices for the home will be shown in infinite variety. Electric stoves, ovens, grills, washers, cleaners, toasters, coffee mills and rake mixers will demonstrate modern household. The housewife of to-day, by turning a switch, can have almost everything done for her by electricity—from the brewing of tea to the beating of carpets. You press a button and you get your books cleaned. Perhaps the general public, and particularly the rising generation, will be most interested in the exhibits of aircraft and aeronautics generally, and in the wireless section. Transmitting sets, arials and power units for long-distance communication will astonish visitors who have not yet realized the enormous progress that is continually being made in the commercial application of wireless transmission. Every kind of receiving set, from the simple "crystal" unit to a complete multi-valve equipment, will be explained. In addition there will be, at frequent intervals, practical demonstrations of wireless transmission and reception of messages, speeches and musical items. Visitors will be able to get into touch with the best musical and theatrical entertainments of the West End, and with the big political demonstrations, if any, are held during the run of the Exhibition. Engineering, however, is only one of the sections of this vast Empire trade



RID-JID
FOLDING IRONING BOARD

A New and Better Ironing Board
The Rid-Jid Ironing Board is as steady as a bridge—it will not wobble, sway, bend nor creep when you iron. You can sit on the end and it will not even tilt. No more propping an old board up on two chairs—backs and having to lift it each time you wish to iron a skirt or petticoat. The Rid-Jid stands firmly on its own foundation, and is so constructed that a full-length skirt may be slipped on over the end.

In spite of its marvelous rigidity, the Rid-Jid is lighter than any other folding board made. It closes as compactly as a pocket knife. We would be glad to have you try it and see.

BOWRING BROS., Ltd.
HARDWARE DEPT.

Hen Feathers in small Sacks Special Prices to wholesale buyers.

BOWRING BROS., Limited,
Hardware Dept.

fair. It has been decided to divide the exhibits into ten sections, 45 groups and 150 classes. Thirty-five class and group committees have been formed, and the organization of the exhibits of each industry is in the hands of its own acknowledged experts.—B.E.E. News Service.

QUIT TOBACCO

So easy to drop Cigarette, Cigar, or Chewing habit

No-To-Bac has helped thousands to break the costly, nerve-shattering tobacco habit. Whenever you have a longing for a smoke or chew, just place a harmless No-To-Bac tablet in your mouth instead. All desire stops. Shortly the habit is completely broken, and you are better off mentally, physically, financially. It's so easy, so simple. Get a box of No-To-Bac and if it doesn't release you from all craving for tobacco in any form, your druggist will refund your money without question.

ACKNOWLEDGMENT.—The Hon. Treasurer Church of England Orphanage gratefully acknowledges receipt from the Estate of the late Hugh Baird of a bequest of \$500.00.

Brick's Tasteless.

A most palatable preparation containing the active principles of the purest

Cod Liver Oil.

It contains all the virtue of Cod Liver Oil without the nauseous grease, and can be taken and retained by those with the most delicate stomach. No unpleasant effects following its use.

No other medicine will restore lost weight so quickly as **BRICK'S TASTELESS.** Weight yourself the day you commence to take **BRICK'S TASTELESS** then weigh yourself two weeks later and note the increase. **BRICK'S TASTELESS** can be purchased wholesale or retail at Messrs T. McMurdo & Co., Geo. Knowling, Ltd., or **DR. F. STAFFORD & SON,** Wholesale and Retail Chemists and Druggists, St. John's, oct31,t

Say Merry Xmas with a photograph. A dozen photographs will solve a dozen puzzling gift problems. Make your appointment early. S. H. Parsons & Sons, Corner Water Street and Prescott Streets.—nov8,31

PIPE

Just Arrived a Shipment of

Black & Galvanized Pipe

all sizes

JOB'S STORES, Ltd.

Municipal Council

WEEKLY MEETING.

The weekly meeting of the Municipal Council was held yesterday afternoon. Mayor Cook presided and Councillors Martin, Outarbridge, Vincent, Ryan and Dowden were present. After the minutes of the last meeting were read and confirmed the following matters received consideration.

Communications were read from the proprietors of Queen, Majestic, Star and Casino Theatres, asking a reduction in the Tax on local Moving Picture and Theatrical entertainments, as the present percentage of 3½ per cent on the gross earnings is excessive. They pointed out that this tax was first imposed with a view to the city receiving a revenue on many thousands of dollars which have been taken out of the country by outside performers. They further stated that in running these theatres they employ quite a number of citizens, and that to tax them on the salaries paid these people is hardly just. The matter was thoroughly discussed by the Council, and deferred for further consideration.

Mr. F. C. Stacey called attention to the inadequate lighting of Warbury Street and asked that arrangements be made for the placing of additional lights at the locality or at least the rearrangement of present conditions. The Lighting Committee will visit the site and see what can be done.

Mr. J. Dempsey applied for position on the city works. The Council cannot accede to his request, as all construction work is being closed down and permanent employees must perform whatever is required in connection with the several departments.

E. J. Horwood, in replying to Council's communication re complaint made by Mr. H. Ross, Victoria Street, stated he was not aware of such and would be only too pleased to remedy any such complaints.

The application of Mr. W. Caul for permission to install an electric motor on his premises, Flower Hill was referred to the City Engineer.

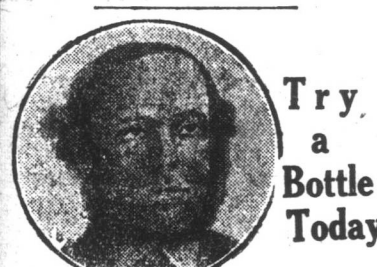
The following plans were passed, subject to the approval of the City Engineer:—Eda Burke (extension) Forest Road; A. Stapleton (outhouse) Merrymount Road; A. W. Bourne (dwelling) Mayor Avenue; and A. Dawe (dwelling) Alexander Street, provided they pay their proportion of cost according to frontage for water and sewerage extension.

The City Engineer reported that a small bridge on the Southside Road needed repairs. This was ordered to be given attention.

Tenders are to be called for the repairing of retaining wall, Henry Street (rear of Gower Street). Orders were given to have posts placed on the Promenade, so as to prevent it being further used by vehicular traffic.

The report on the health of the city for week showed five new cases of Diphtheria; four of Typhoid and three Scarlet Fever.

Reprints of the City Engineer, Sanitary Supervisor, etc., were tabled; accounts presented ordered paid, after which the meeting adjourned.



DR. MINARD, Inventor of the Celebrated **MINARD'S LINIMENT.**

Are you going? I am, sure. Couldn't miss C.L.B. Concert, Methodist College Hall, Friday evening.—nov8,31,m.w.f



A Round Roast is a Royal Roast.

Does Cleanliness, Sanitation or Hygiene count for naught where Fresh Meats are concerned?

ELLIS & CO.
LIMITED,
MEAT DELICATES
SEN MARKET,
203 WATER STREET.

Finest Canadian Steer Beef
Prime Roasts: Sirloin, Ribs, Eye or Rib.
Choice Steak: Porterhouse, Sirloin or Fillet.

Choices Quality Native Lamb.
Prime Legs, Loins, Shoulders Cutlet, Chop or Fillet.

Prime Native Mutton: Legs, Loins, Shoulders, Chop or Fillet.

Native Milk Fed Pork: Roasts, Chops, Fillets, Ham and Shoulders.

SPECIALTIES:
Raised Shoulders—Mutton or Lamb.
Roasts—Boned & Rolled.
Our Own Made Sausages.
Finest materials used in making.

Fresh Daily: Pork, Beef or Tomato.
Spiced Beef Ham.
Rolled Corned Beef.
Rolled Mutton and Lamb.
Sausage Meat.
Minced Collops.

Fresh Corned Ox Tongues.
New York Corned Beef.

New York Turkeys.
New York Chicken.
P. E. I. Geese.
Fresh Local Ducks.

Fresh Oysters
Real Blue Points.

INTRODUCING
SOLVENE

Shredded Soap.

SOMETHING NEW
An absolutely perfect White Soap in its original form. You never saw a soap like this before.

SOLVENE makes SNOW-WHITE CLOTHES.
TRY IT ONCE YOU WILL NEVER BE WITHOUT IT.

ASK COWAN HE PROBABLY KNOWS
Where you can buy what you want, or sell what you have to offer.

Office 276 Water Street.
Telephone—Office 24; residence 1383.
m.w.f.

ASK COWAN HE PROBABLY KNOWS
Where you can buy what you want, or sell what you have to offer.

Office 276 Water Street.
Telephone—Office 24; residence 1383.
m.w.f.

ASK COWAN HE PROBABLY KNOWS
Where you can buy what you want, or sell what you have to offer.

Office 276 Water Street.
Telephone—Office 24; residence 1383.
m.w.f.

ASK COWAN HE PROBABLY KNOWS
Where you can buy what you want, or sell what you have to offer.

Office 276 Water Street.
Telephone—Office 24; residence 1383.
m.w.f.

ASK COWAN HE PROBABLY KNOWS
Where you can buy what you want, or sell what you have to offer.

Office 276 Water Street.
Telephone—Office 24; residence 1383.
m.w.f.

ASK COWAN HE PROBABLY KNOWS
Where you can buy what you want, or sell what you have to offer.

Office 276 Water Street.
Telephone—Office 24; residence 1383.
m.w.f.