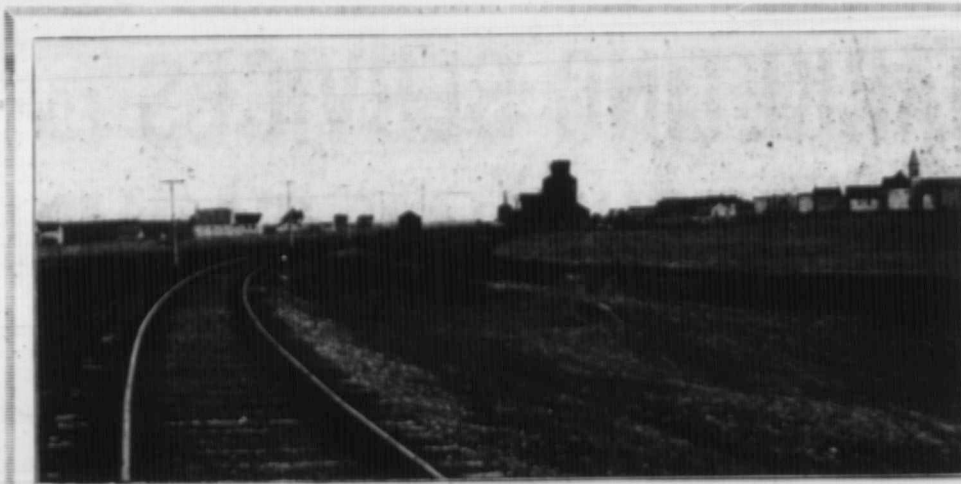


*Bill
Your
Car to
Us . .*

*- We -
Handle*



Wheat, Oats Flax, Barley

We handle them all for Farmers

If you are near one of our 258 country Elevators in Saskatchewan you can use the Elevator. But whether you load through the Elevator or over the platform . .

BILL YOUR CAR TO US

Farmers are in the grain business to give themselves good service. They study grain marketing and selling from the farmers' point of view.

The charge is 1 cent per bushel commission on wheat, flax and barley, and $\frac{3}{4}$ cent per bushel on oats. Our own inspector checks the government grading of all cars billed to us and if he thinks it advisable, calls for a re-inspection. Every car is traced right through and its condition is noted.

Claims for any shortage in weights on platform cars are handled free of charge.

Our sales manager obtains the highest possible prices for the grain entrusted to the company for sale.

We are eyes, ears and brains for our shippers when handling their grain.

Last year we handled over 44 million bushels of grain, including 3,287 platform-loaded cars.

Saskatchewan Co-operative Elevator Co. Ltd.

Head Office: Regina, Sask.

Commission Dept.: Winnipeg, Man.