

A Bird's Eye View



of a city doesn't do justice to it, because it only gives an idea.

The same applies to this advertisement; it only gives a small idea of the Tubular qualities.

We want you to have a thorough understanding of the benefits derived from a Tubular Separator.

The simplicity, durability and efficiency of the Tubular are admitted by our competitors and vouched for by thousands of satisfied users.

It is built to skim clean and last a life time; and it does and will.

The Tubular bowl is so simple and so easy to handle that it can be cleaned in two or three minutes.

There are so many points of excellence to be found in the Tubular, that to get a thorough knowledge of them you must read Catalog 186.

THE SHARPLES SEPARATOR CO.,
West Chester, Penna.

Toronto, Can. San Francisco, Calif. Chicago, Ill.

Vancouver Island British Columbia

118 acres sea frontage, with good beach..... \$25.00 per acre
100 acres good fruit land, small creek, frontage on road..... \$17.00 per acre

140 acres: 20 acres cleared and cultivated, 60 acres pasture, 30 acres alder land, 30 acres timber land, suitable for fruit, 8 roomed house and farm buildings, 1 1/2 miles from Railway Station. Price, including stock and implements.... \$6,500.00

J. H. Whittome

Duncan's, V. I., B. C.

Keep Your Lumber from Rotting BY USING SIDEROLEUM

SIDEROLEUM the new Wood Preservative and Stain for your House, Barn, Fence and Machinery.
SIDEROLEUM is the cheapest and best preservative made.
SIDEROLEUM makes the wood Rot Proof and prevents decay.
SIDEROLEUM keeps damp from penetrating.
SIDEROLEUM drives out vermin.
SIDEROLEUM will destroy all disease germs in your horse and cattle mangers.
SIDEROLEUM will keep any length of time.
SIDEROLEUM you can apply yourself and it dries quickly.
SIDEROLEUM can be used inside as well as outside.
SIDEROLEUM can be put on in the winter as well as summer.
SIDEROLEUM dries a pleasing Nut Brown color.
Sold in 10 Gallon drums by the sole Importers,
Price \$1.00 per gallon on car.
Cash with order. Drums free.
Booklet and sample of treated wood on application.

West, Porteous & Co.,
Suite 7, Empress Block
354 Main St., WINNIPEG
Telephone 3386.

Farmer's Advocate and Home Journal

The Only Weekly Farm Journal in Western Canada



PUBLISHED EVERY WEDNESDAY BY THE

FARMER'S ADVOCATE OF WINNIPEG, LIMITED

GENERAL OFFICES:

14 and 16 Princess Street, Winnipeg, Manitoba

Branches at London, Ont. and Calgary, Alta.

BRITISH AGENCY—W. W. CHAPMAN, Mowbray House, Norfolk Street, W. C., London, England.

Terms of Subscription.—In Canada, England, Ireland and Scotland, \$1.50 per year in advance; \$2.00 when not paid in advance. In the United States, \$2.50 per year in advance. All other countries, \$3.00.

Advertising Rates.—Single insertion, 15 cents per line, agate. Contract rates furnished on application.

Remittances should be made direct to this office, either by Express or P.O. Money Order or Registered letter, which will be at our risk. When made otherwise we will not be responsible.

The Date on Your Label shows to what time your subscription is paid.

Change of Address.—Subscribers when ordering a change of address should give the old as well as the new P. O. address.

We Invite Farmers to write us on any agricultural topic. We are always pleased to receive practical articles. For such as we consider valuable we will pay ten cents per inch printed matter. Contributions sent us must not be furnished other papers until after they have appeared in our columns. Rejected matter will be returned if accompanied by postage.

Anonymous communications will receive no attention.

Letters intended for publication should be written on one side of the paper only.

The Farmer's Advocate is sent to subscribers until an explicit order is received for its discontinuance. All payments of arrears must be made as required by law.

Address all communications to

FARMER'S ADVOCATE OF WINNIPEG, Limited
Winnipeg, Manitoba.

WE OFFER HARDY TREES

Grown for

Manitoba, Saskatchewan and Alberta

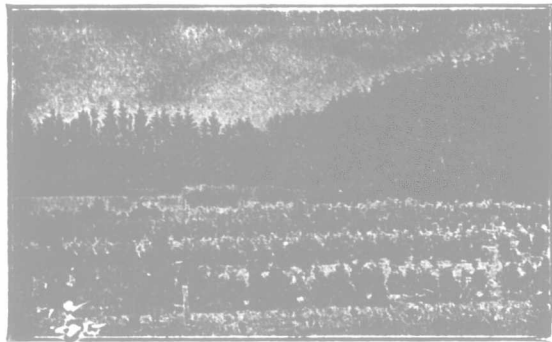
planting in varieties tested and recommended by Experimental Stations at Brandon and Indian Head

SALESMEN WANTED

to start NOW ON FALL SALES

Liberal Commissions
Pay Weekly

THE FONTHILL NURSERIES



OLDEST and LARGEST in CANADA
Established 1837 Over 800 acres

Stone and Wellington, - Toronto, Ont.

ROYAL CITY REALTY Co. B. P. RICHARDSON
New Westminster, B. C. P. O. Box 625

Farm Lands & City Property

We can suit you in a large or small acreage in the rich Fraser River Valley. The best climate; the best soil; a future of crops unknown. Fruit and Chicken ranches available. Write for particulars. Correspondence invited.

BARRISTER, SOLICITOR
NOTARY PUBLIC.

GRENFELL, SASK.

LANDS FOR SALE

CATALOGUES AND BOOKLETS

MUST HAVE STYLE AND DRESS

You may want something of this nature. Let us build it for you.
You will find our prices as reasonable as our service is excellent.

Farmer's Advocate of Winnipeg, Limited

Unedda Change

Does an Orchard Home in The Kootenays, where 10 acres in Fruit, equal 160 acres of Wheat on the Prairies, interest you?

¶ Would you enjoy the finest climate in the world all the year round? Do you appreciate what it is to live amidst the finest scenery in the world? It makes work a pleasure.

SLOCAN PARK

¶ Some of the things that make it the best, and what you want:—

1. **Situation**—On the beautiful Slocan River, on the C. P. R., 20 miles from Nelson, and 10 minutes walk from station and village.
2. **Quality**—100 per cent. good fruit land, no stones, easy clearing, plenty of water, and as level as a prairie farm. Uncleared, cleared and planted, or some of each.
3. **Terms**—None easier.

Write for maps and particulars.

Kootenay-Slocan Fruit Co.
LIMITED
Nelson, B. C.

Thresherman's RECEIPT BOOK

AN EASY, ACCURATE AND QUICK METHOD OF KEEPING YOUR ACCOUNTS AND RENDERING STATEMENT TO CUSTOMER

PRICE **25 CENTS**

Farmer's Advocate, Winnipeg
14-16 Princess St.

SYNOPSIS OF

CANADIAN NORTH-WEST

HOMESTEAD REGULATIONS

Any even numbered section of Dominion Lands in Manitoba, Saskatchewan and Alberta excepting 8 and 26, not reserved, may be homesteaded by any person who is the sole head of a family, or any male over 18 years of age, to the extent of one-quarter section of 160 acres, more or less.

Application for entry must be made in person by the applicant at a Dominion Lands Agency or Sub-agency for the district in which the land is situated. Entry by proxy may, however, be made at an agency on certain conditions by the father, mother, son, daughter, brother or sister of an intending homesteader.

DUTIES.—(1) At least six months' residence upon and cultivation of land in each year for three years.

(2) A homesteader may, if he so desires, perform the required residence duties by living on farming land owned solely by him, not less than eighty (80) acres in extent, in the vicinity of his homestead. He may also do so by living with father or mother, on certain conditions. Joint ownership in land will not meet this requirement.

(3) A homesteader intending to perform his residence duties in accordance with the above while living with parents or on farming and owned by himself must notify the Agent for the district of such intention.

W. W. CORY.

Deputy of the Minister of the Interior
N. B.—Unauthorized publication of this advertisement will not be paid for.