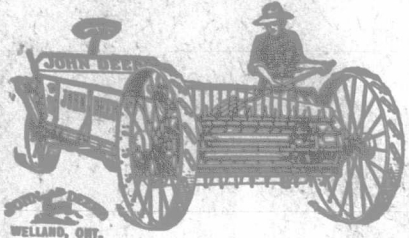


John Deere Spreader

The Spreader with the Beater on the Axle



Take any manure spreader you have ever seen, remove all the clutches and chains, all the countershafts and stub axles, do away with all adjustments and mount the beater on the rear axle. Rebuild the spreader so that the top of the box is only as high as your hips. Make it stronger. Remove some two hundred trouble-giving parts and throw them away. You will have some sort of an idea of what the John Deere Spreader, the Spreader with the Beater on the Axle, is like.

The Beater on the Axle

The beater and all its driving parts are mounted on the rear axle. This construction is patented. You cannot get it on any other spreader made.

Power to drive the beater is taken from the rear axle through a planetary transmission (like that on automobiles). It is positive, runs in oil, and does not get out of order.

Few Working Parts

The John Deere Spreader is so simple that there are no adjustments. It has some two hundred less parts than the simplest spreader heretofore made.

There are no clutches to throw it into gear. The lever at the driver's right is moved back until the finger, or dog, engages a large stop at the rear of the machine. All the chains and adjustments have been done away with.

Only "Hip-High"

Because the beater is mounted on the rear axle, it is only "hip-high" to the top of the box. Each forkful of manure is put just where it is needed. You can always see into the spreader.

Roller bearings, few working parts, the center of the load comparatively near the horses, and the weight distributed over four wheels, make the John Deere Spreader light draft.

Spreader Data Free—Tells about manure, when and how to use it, how to store it, and a description of the John Deere Spreader. Ask for this data as Package No. Y 119

John Deere Plow Company, Limited
Toronto, Ontario

PUMPING

With a "GOES LIKE SIXTY" Pumping Outfit.

No more backaches. No more waiting for the wind. The Gilson 60 SPEED is the ideal pumping engine. It "GOES LIKE SIXTY". Furthermore, it is a portable power house, ready to operate pump, saw, machine, cream separator, chaff cut, light dynamo, wood saw, feed mill, roller, pulper, etc. It is made of cast iron, complete with line shaft, belt and mangle pulleys, and universal joints.

The Gilson 60 SPEED is the simplest engine on the market. A child can operate it.

For full particulars and also catalogue of pumps, pump jacks, wood saws, etc.

GILSON MANUFACTURING CO.,
Guelph, Ont.



"Our Ideal"

FARMERS! Buy always the Best

Buy our famous, superior home-grown and imported seeds. Ask for catalogue. Order our famous Special Collections.

Farm garden collection, 26 selected varieties, \$1 postpaid.

Trial collection, 18 selected varieties, 50c. postpaid.

Children's collection, 15 selected varieties, 25c. postpaid.

OUR HOME-GROWN

Yellow Mangel "Our Ideal"

leads them all. It is the new mangel with the greatest future. An easy harvester and a keeper of highest feeding value. The 1912 report of the Ontario Agricultural & Experimental Union in the competing co-operative experiments, shows the "Ideal" as the leading variety, with 100 value and 32.40 tons per acre.

50 cents per pound.

Give them a trial.

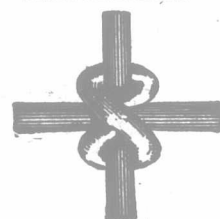
Ontario Seed Co., Successors WATERLOO, ONTARIO

Our Hurst Sprayers are the best.

Ask for Catalogue

The Anthony Fence

Made in Canada



The Anthony Knot

A fence that is tied with a perfect lock.

A lock that is strong, neat and compact.

A lock that will not loosen by expansion and contraction from heat and cold.

A lock that won't come off.

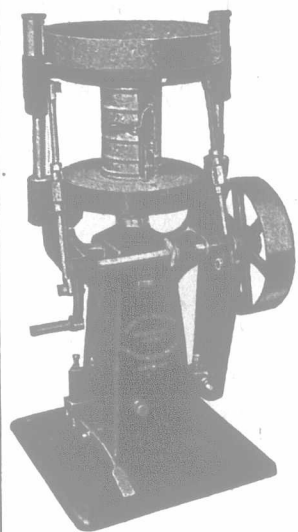
The Anthony Fence is made of all No. 9 wire, which is thoroughly galvanized.

The Anthony Fence will not bend down at the top or roll up at the bottom, but will stand up straight when erected.

The Anthony Fence will stop anything from a pig to a bull.

If you are interested in a fence like this, write for full descriptive catalogue. Live agents wanted in all unoccupied territory.

THE ANTHONY WIRE FENCE CO. OF CANADA, LIMITED
WALKERVILLE, ONTARIO



"London"

CEMENT DRAIN TILE MACHINE

Makes all sizes of tile from 3 to 16 inches. Cement Drain Tiles are here to stay. Large profits in the business. If interested send for catalogue.

London Concrete Machinery Company, Dep't. B London, Ontario.

Largest manufacturers of Concrete Machinery in Canada.

STUMP EXTRACTOR

If you are troubled with stumps, give our "Patent Samson Stump Extractor" a trial. It has now been in use in Europe for the past three years with the greatest success. By its assistance, two men will do the work of three men and a horse. It can also be used for felling trees.

WRITE US FOR DETAILS.

The Canadian Boving Co., Ltd.
164 Bay Street, TORONTO

ISLAND OATS

If the farmers of the Maritime Provinces, Quebec and Ontario want to make sure of getting the highest possible grade of seed oats for the spring of 1913, apply to us at once. To prevent a repetition of the disaster that befell so many farmers last year by sowing devalitized grain, we have stored at Point Du Chene and Pictou 50,000 bushels of large, selected, separated white seed oats, true to name and free from noxious weed seeds. If will be the farmers' own fault if they do not procure good seed, as the extra yield of those oats pays twice over the cost of the seed. Our firm name is stencilled on every bag. Do not allow the dealers to give you other than Read's oats for seed.

JOS. READ & CO., Ltd., Summerside, P. E. I.

Corn That Will Grow

Canadian-grown seed corn. Your money back if not satisfied.

J. O. DUKE, RUTHVEN, ONT.

CANADIAN PACIFIC

EXCURSIONS

To Manitoba, Saskatchewan, Alberta

HOMESEEEKERS

Low Round Trip Rates each Tuesday, March to October inclusive

Winnipeg and Return - \$35.00

Edmonton and Return - 43.00

Other points in proportion

Return Limit two months.

TOURIST SLEEPING CARS

on all excursions. Comfortable berths, fully equipped with bedding, can be secured at moderate rates through local agent.

SETTLERS

For settlers traveling with live stock and effects.

SPECIAL TRAINS
Will leave Toronto
Each TUESDAY
MARCH AND APRIL
10.20 p.m.

Settlers and families without live stock should use

REGULAR TRAINS
Leaving Toronto
10.20 p.m. Daily
Through Colonist and Tourist Sleepers

COLONIST CARS ON ALL TRAINS

No charge for Berths

Home Seekers' Trains Leave Toronto 10.20 p.m. during March, April, September and October, and at 2 p.m. and 10.20 p.m. during May, June, July and August. Through Trains Toronto to Winnipeg and West

Full particulars from local agent or write M. G. Murphy, District Passenger Agent, Toronto

BEST RESULTS ARE OBTAINED FROM ADVOCATE ADVERTISEMENTS.