

MATINEES
WED & SAT
BEST SEATS
25 & 50c

GRAND OPERA HOUSE

PRICES NEVER CHANGE

MATINEES
WED & SAT
BEST SEATS
25 & 50c

LOOK OUT FOR THE LAUGH WAVE—THE FARCE SUPREME



GRACE MERRITT, THE DAINY CANADIAN COMEDIENNE

THE BLUE MOUSE

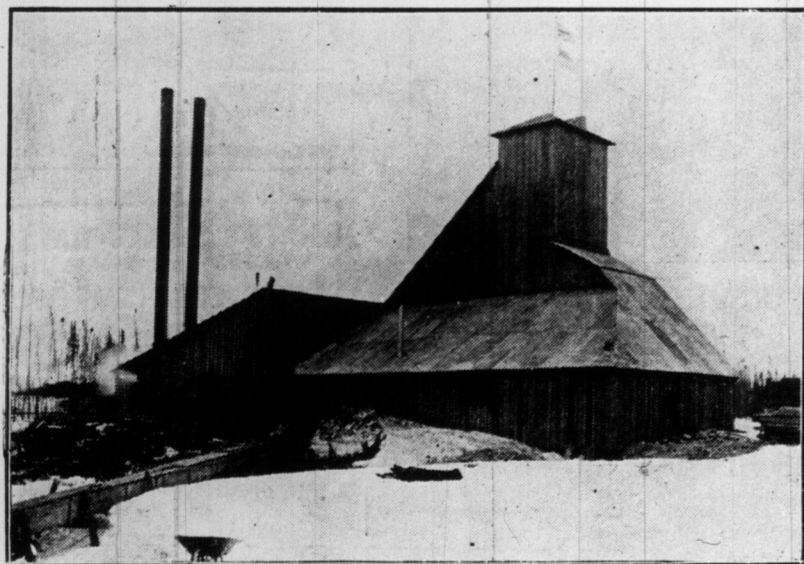
PASSED BY THE PURE FUN LAWS OF AMERICA,
GERMANY, AUSTRIA, FRANCE AND DENMARK

THE COMEDY THAT CHARMS THEM ALL

GRACE MERRITT AS "THE MOUSE"

THE FARCE EVERYONE TALKS ABOUT AND WANTS TO SEE

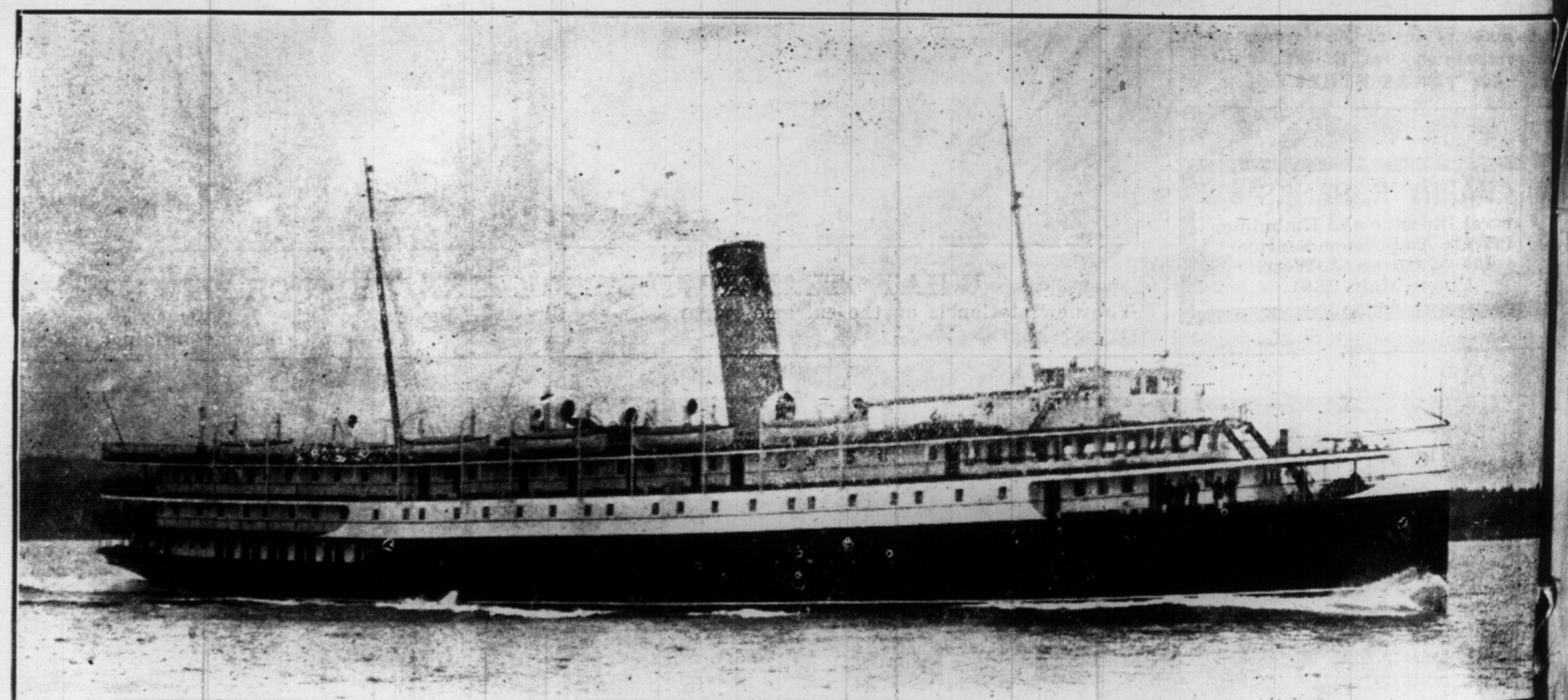
NEXT WEEK — MONTGOMERY AND STONE'S "THE RED MILL" FIRST TIME HERE AT OUR PRICES — NEXT WEEK
GREATEST MUSICAL SUCCESS



REAR VIEW OF SHAFT HOUSE, DETROIT NEW ONTARIO MINES, LIMITED, MUNROE TOWNSHIP.

GRACE MERRITT'S STAGE CAREER.

Miss Grace Merritt, the Toronto girl who has been engaged for leading roles by the Shubert Brothers of New York, has had an interesting and varied career, and the future looms large for her. Her early work was with Richard Mansfield, and her first conspicuous role was that of "The Lady" in Bernard Shaw's "Man of Destiny," in which she achieved a most remarkable success, altho only a girl of eighteen at the time. She has toured with Julia Marlowe, H. Reeves-Smith, Orrin Johnson and others, and acted leading roles in plays by Cosmo Hamilton, Charles Major and other well-known playwrights. Miss Merritt's most distinguished success has been as "Mary Tudor" in "When Knighthood Was in Flower," playing this extremely difficult role in all the leading cities of the United States, except those on the Pacific Coast, and sustaining it profitably for her management for three seasons. Miss Merritt appeared under



"THE NEWEST PRINCESS"—THE MOST RECENT ADDITION TO THE CANADIAN PACIFIC RAILWAY'S PACIFIC COAST FLEET, IS PRINCESS ADELAIDE. WHILE NOT THE LARGEST SHE IS ONE OF THE MOST HANDSOME BOATS OWNED BY THE C. P. R.

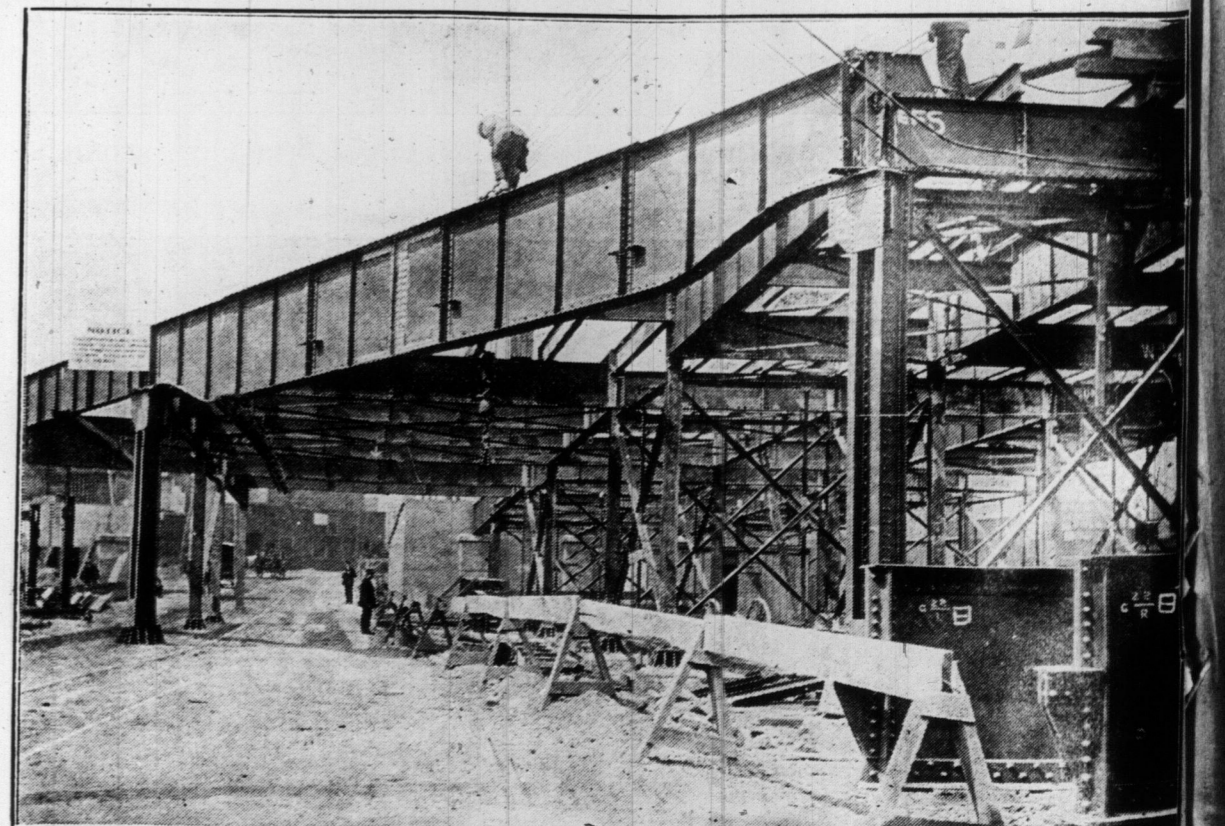


SCENE FROM THE FAMOUS CLYDE FITCH COMEDY, "THE BLUE MOUSE," WHICH WILL BE PRESENTED AT THE GRAND ALL THIS WEEK, WITH GRACE MERRITT, IN THE LEADING ROLE.

the direction of William A. Brady last season, playing the leading feminine role in "The Master Key." Her first appearance under the Schubert management is in the title role of "The Blue Mouse," the late Clyde Fitch's last and most amusing comedy. Miss Merritt possesses a dainty and attractive personality, is a young artist of rare talent, and many of her professional friends predict that she will become the leading American comedienne. "The Blue Mouse" with Miss Merritt in the title role will be seen at the Grand Opera House all this week.

Tea at Five.
Candles on pink-petaled globes,
Daffodils sheathed all in green,
"Buds" in bewildering robes,
Dainty, demure and serene—
Think when they ask me to come,
Teas are for women—a bore—
But here's a comforting crumb—
Lillith is certain to pour!
Lillith in flower-like guise,
Putting the daffies to shame,
Smiling in friendliest wise,
Saying "So glad that you came!"
Likewise bestowing her smiles
On men, and more men, for these
Flock where sweet Lillith beguiles—
Even to afternoon teas!

Five—and I haste to depart—
So do the others galore,
Saying each one in his heart:
"Lillith is certain to pour."
But, at disquieting whiles,
I know (I wonder do these?),
Little Miledi of Smiles—
You are the afternoon tease. —Puck.



PROGRESS ON NEW BRIDGE OVER THE DON AT QUEEN STREET.

Warni
to M
Hol
for
Plan
Nati
NEW
ton. corr
writes:
"Amba
state de
City, wh
pous ric
dimouty
An ord
dent. Dis
shall be
The de
given to
cancelled
Terror
It is re
and app
The riot
near app
Many ha
Ambassa
rioting be
spread to
As soon
put down
breaks ou
Preside
pultepo
self. Th
his resign
ed.
The Mex
ing Diaz
preside
demands.
At the
foreigners
the mobs.
Barre and
directing
era.
Following
day from
Petry of
eral Wood
sentative H
military aff
conference
White Hou
General
Taft, that
propo to S
for nearly
partment ne
900 more
WARREN
EGRAPHE
GENERAL
AT SAN A
HIM TO
READINES
FORWARD
The war
weeks has
for the M
NATIONAL
IN THE B
TION, BE
TANEOUSL
TO THE SA
CROSS TH
President
this afterno
sional call
would not
congress fo
unless it bec
and that
would be o
authority of
So long as
seat Mr. Ta
less there sh
and manag
OCCURS, T
ORDER TH
NO ACROS
FURTHER
The preside
tion with A
sees all rep
conals in M
ports. Arty
Mexican situ
anxiety.
Advisers cl
ators, are be
to which he
The Amerie
a gloomy pic
sul Miller, a
kell, at Salf
at Salfio; C
and Consul G
telegraphed
day. Every
tion of bract
around their
FOUND
Cause of Un
Mys
As Pollicem
his rounds th
alley running
early Sunday
cently upon th
tightly in bet
some old door
the man might
sent a call fo
which hurried
corpse to St. J
It was found
dead a short
there were no
body, the caus
ascertained. T
to the morgue.
The man was
weighed 170 p
murachae wer
wore a blue se
shirt, and a p
flowers.
CADETS AT
The Long Br
opened an
santy membe
Association and
Lord Cadet, Cor
light, with a sco
Capt. F
Hull was nex
A. Pederson a
Harberd stat