

TRADE NOTES.

Messrs. R. H. Buchanan & Company, Montreal, Canadian agents for the Rossendale Belting Company, Manchester, report heavy orders for belting. Mr. E. P. Kingdon, a member of the Rossendale Company who has recently been in Canada, returned to England last month.

A very attractive booklet has been issued by The Palmer Company, Limited, of Fredericton, N. B., giving illustrations and particulars of the larrigans, packs and waterproof sporting boots of which this company are extensive manufacturers. We understand that a very large edition of this booklet has been published.

Messrs. Baldwin, Tuthill & Bolton, of Grand Rapids, Mich., have issued a new catalogue of their saw fitting machines and tools. It is most complete, and in addition to illustrations and particulars of their various de-

vices, contains many special articles on saw fitting and kindred subjects. Every mill owner should have a copy of the catalogue.

C. N. Cornell, Vancouver representative for the William Hamilton Manufacturing Company, of Peterborough, Ont., has secured the contract to furnish the following apparatus. One 14 x 20 inch Corliss frame slide valve engine and one 60 inch by 16 feet stationary tubular boiler for Thomas Kirkpatrick, shingle manufacturer, Vancouver; one pair 20x24 inch engines for the new shingle mill of the Hastings Shingle Manufacturing Company; one 10x12 inch logging engine for the British Columbia Mills, Timber and Trading Company, Vancouver. The above will be of the William Hamilton Manufacturing Company's make.

Attention is directed to the advertisement of the Winnipeg Machinery and Supply Company. This company was organized in October of last year, Mr. J. C. Gibson being appointed vice-president and general manager. "Everything for Power" is their motto. They make a specialty of installing complete saw mill

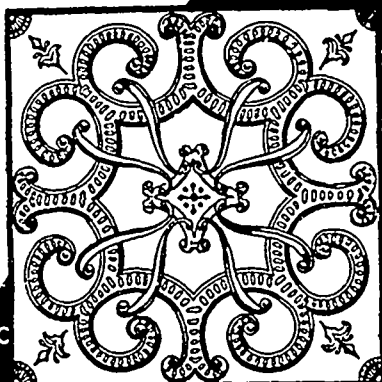
outfits, and are dealers in engines, boilers, iron and wood-working machinery, motors, dynamos, elevators, etc. In addition to the above they are sole Canadian representatives for the celebrated "Keasey" split wood pulley, with malleable iron hub, and western agents for the Jenckes Machine Company, Sherbrooke, Que., and Maddison Williams, Port Perry, Ont. Although only organized a short time, the company have found it necessary to erect new premises in order to meet the increasing demands of their business. The new building is 80x50 feet.

VIRGIN PINE BELT.

Mr. J. F. Whitson, of the Ontario Crown Lands Department, while in the Algoma district on an exploration trip, discovered a large belt of virgin pine forest along the Mississaga river. He reports that it comprises probably one thousand square miles. In some places it runs above four million feet to the mile, and, on the whole he thinks it will equal in quantity and quality the pine of the Temagami forest reserve, which is generally estimated at 3,000,000,000 feet. It is of the very best quality.

# INTERIOR DECORATION

THAT  
RETAINS  
ITS  
BEAUTY!



Our  
Metallic  
Ceilings  
AND  
Walls

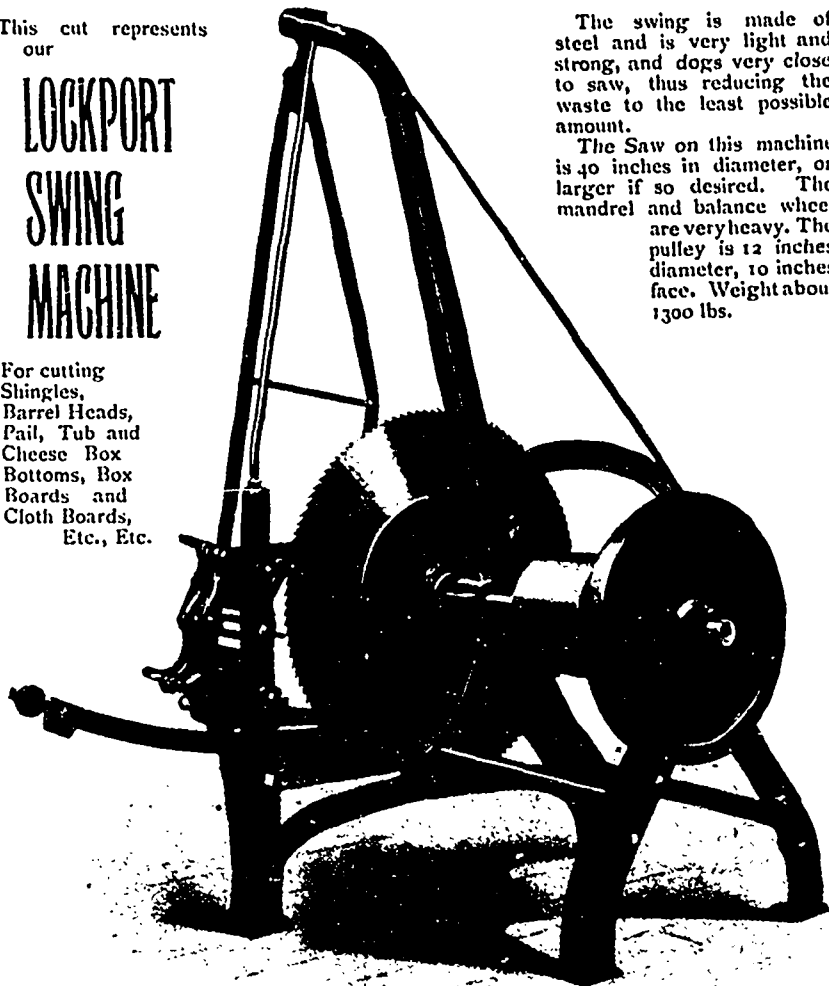
are in highest favor with practical and artistic people alike. We make countless beautiful designs with borders, friezes, dados and every detail to match; they are easily applied, in old buildings over plaster, or in new ones where plaster is not required. They are suited for every building where practical, durable beauty is desired in the decorative finish, and are fire-proof and sanitary. **EXPENSIVE?** Not at all. First cost is small. The plates are so carefully made they fit accurately. We will give you an estimate if you send an outline showing shape and measurements of your ceilings and walls. Let us hear from you.

The Metallic Roofing Co. Limited, Toronto.

This cut represents  
our

## LOCKPORT SWING MACHINE

For cutting  
Shingles,  
Barrel Heads,  
Pail, Tub and  
Cheese Box  
Bottoms, Box  
Boards and  
Cloth Boards,  
Etc., Etc.



The swing is made of steel and is very light and strong, and dogs very close to saw, thus reducing the waste to the least possible amount.

The Saw on this machine is 40 inches in diameter, or larger if so desired. The mandrel and balance wheel are very heavy. The pulley is 12 inches diameter, 10 inches face. Weight about 1300 lbs.

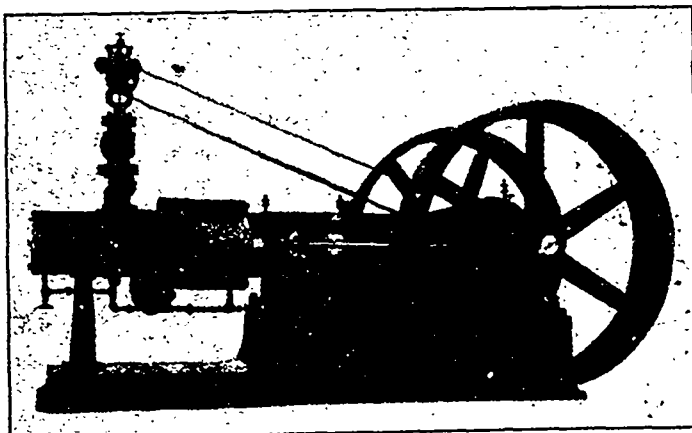
QUOTATIONS ON APPLICATION

THE E. LONG MFG. CO., ORILLIA  
ONTARIO

### OUR EXTRA HAND-MADE AXE

This Axe stands better in frosty weather than any axe made. Send for sample. Can supply any pattern.

CAMPBELL BROS.  
Mfrs.  
St. John, N.B.



Economy,  
Durability, Simplicity, Small Cost.  
All Steam Users are interested.  
Send for Catalogues and Prices.

## The Hardill Compound Engine

Medium Speed

Simplified Valves

Universal Application

Perfect Design

Built in all cases by

THE HARDILL COMPOUND ENGINE CO.,  
OF MITCHELL, ONT., LIMITED