

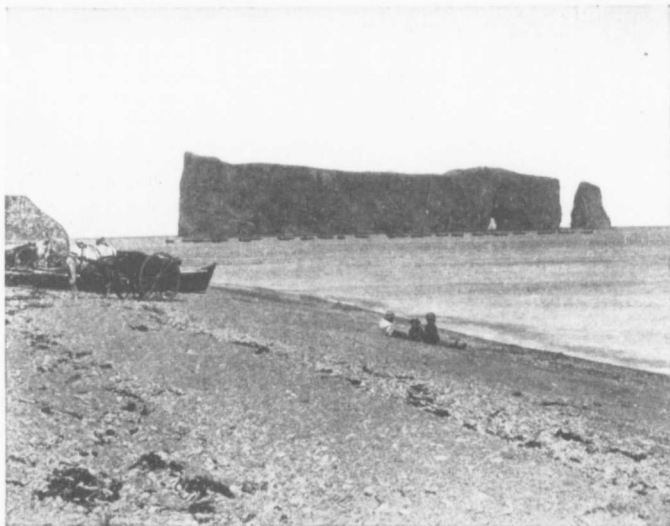
Miles from
Montreal

York and other cities of the United States, who are willing to pay well for what has been termed the "Sport of Kings." This part of the Matapedia is a place of singular beauty, and the charm of the scenery of mountain, valley and winding river never fails to awaken a responsive chord in those who love the artistic.

From Matapedia the line of the Quebec Oriental Railway runs to Gaspé Peninsula.

THE GASPE PENINSULA

Gaspé Peninsula has been described as a huge finger reaching out from the continent into the Gulf of St. Lawrence. In straight-away measurement, it has a length of about 120 miles and a breadth of some 90 miles in the widest part, with a total area of over 10,000 square miles. The Gaspé fisheries are regarded as the richest in the world. For centuries hardy fishermen have taken their annual toll in vast catches of codfish, and still there is no sign of depletion. Fishing and farming are frequently said to be industries which do not flourish side by side. However true this may have been in the past, it is only now partly true as regards Gaspé, for the fisher folk have discovered that those who sow may also reap, and while still following their chosen vocation they find time to raise good crops of potatoes and vegetables for their own use, and the finest of fodder for their cattle and horses. Practically the whole of the Peninsula is a fish and game preserve. The connection of the Quebec Oriental Railway at New Carlisle with the Atlantic, Quebec & Western Railway, making a through line from



Perce and the Rock
