

Litharge, Am.,	0 1/2	8
Sienna, burn,	15	20
Umber, "	8	12 1/2

**CEMENT, LIME, etc.**

Lime, Per Barrel of 2 bushels, Grey,	35
" " White	35
Plaster, Calcined, New Brunswick	2 00
" " Nova Scotia	1 00
Hair, Plasterers', per bag	3 00
Cement, Portland, per bbl	1 50
" Thorold,	1 50
" Queenston,	1 50
" Napanee,	1 50

**HARDWARE.**

**Cut Nails:**

American Pattern, 1 1/2 inch, per keg	4 75
" " 1 1/2 to 1 3/4 inch, per keg	3 50
Canadian Pattern, 1 1/2 inch, per keg	3 75
" " 1 1/2 to 1 3/4 inch, "	3 15
" " 2 to 2 1/2 inch, "	3 75
" " 2 1/2 to 2 3/4 inch, "	3 00
" " 3 inch and larger	2 75
Steel nails 10c. per keg extra.	5 80
Finishing nails, 1 inch, per keg	5 10
" " 1 1/2 inch "	4 75
" " 1 3/4 " "	4 50
" " 2 " and larger	4 10

**MONTREAL PRICES.**

**Lumber, Etc.**

Ash, 1 to 4 in, M.	\$13 00@18 00
Birch, 1 to 4 inch, M.	15 00 25 00
Basswood	13 00 20 00
Walnut, per M.	30 00 100 00
Butternut, per M.	31 00 40 00
Cedar, flat	08 06 10 10
Cherry, per M.	65 00 80 00
Elm, Soft, 1st.	15 00 17 00
Elm, Rock	20 00 21 50
Maple, hard, M.	16 00 21 00
Maple, Soft	16 00 21 00
Oak, M.	40 00 51 00
Pine, select, M.	35 00 40 00
Pine, 2nd quality, M.	30 00 35 00
Shipping Culls	8 00 10 00
Will Culls	8 00 10 00
Lath, M.	1 75 1 90
Spruce, 1 to 2 inch, M.	10 00 12 00
Spruce Culls	4 50 6 00
Shingles, 1st quality	2 00 3 25
" 2nd "	1 25 2 00

**Cement, etc.**

Portland Cement, per barrel	\$ 2 50@ 2 87
Keman "	2 50 2 87
Fire Bricks, per M.	18 70 24 00

**Cut Nails:**

Hot-cut Am. or Can. pattern, 3 inch and above	1 65 \$9 75
Hot-cut Am. or Can. pattern, 2 1/2 inch and above	2 90 3 15
Hot-Cut Am. or Can. pattern, 2 1/2 and 3 inch.	3 15 4 10
Am. pattern, 1 1/2 and 1 3/4 inch hot-cut	3 40 5 50
" " 1 1/2 inch	4 15 5 70
Can. Pattern, cold-cut, 1 1/2 and 1 3/4 inch	3 15 4 35
" " 1 1/2 inch	3 05 4 25
Finishing Nails, per 100 lb. keg, 1 1/2 to 1 3/4 inch.	75 cents advance on Hot-Cut Nails.
Finishing Nails, per 100 lb. keg, 2 inch and up.	

**Paints, etc.**

White Lead, pure, 25 to 100 lb. kegs.	6 25 6 50
" No. 1.	5 95 5 50
" No. 2.	4 50 4 75
" No. 3.	4 00 4 25
dry.	5 25 5 75
Venetian Red, English.	1 50 1 75
Yellow Ochre, French.	1 75 3 00
Whiting, London, washed.	0 50 0 65
" Paris.	1 75 1 95

**Oils:**

Lined, raw.	0 65 0 67
" " boiled.	0 68 0 70
Olive, pure.	1 10 1 20
" machinery.	1 05 1 00
" extra, qt., per can.	3 15 3 25
" " "	2 50 2 70
" 1/2 pts.	2 75 3 10
Spirits turpentine.	0 75 0 75

**J. H. FARR & CO.**

MANUFACTURERS OF

**ROOFING PITCH**

— AND —

**TARRED PAPER.**

—) ALSO (—

**Asphalt Paving Pitch, &c.**

6 and 8 Morse St., TORONTO ONT.

**EDWARD TERRY**

DEALER IN

**Portland and Queenston Cements.**

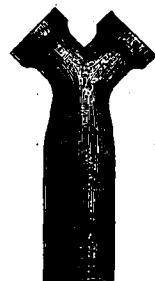
PLASTER PARIS, GREY AND WHITE LIME,

Fire Brick and Clay, Sewer Pipe, Hair, American and Canadian Lime, Plaster, Salt.

23 and 25 GEORGE ST.,

Telephone 164.

TORONTO.



**BUFFALO SEWER PIPE COMPANY,**

THE ONLY MANUFACTURERS IN BUFFALO OF

Steam Pressed, Salt Glazed

**Vitrified Drain & Sewer Pipe**

Office and Factory:

NEAR NIAGARA STREET, Black Rock, BUFFALO, N. Y.



Samples may be seen at any time at the office of the City Engineer, Toronto, Ont.

**MAGUIRE'S Ventilating Self-Flushing and Self-Cleaning Trap.**

Sewer Pipe, Chimney Tops, Fire Brick, Fire Clay,



Robert Carroll, 66 Adelaide St. West, TELEPHONE No. 208.

PORTLAND

—AND—

THOROLD CEMENTS

always on hand.

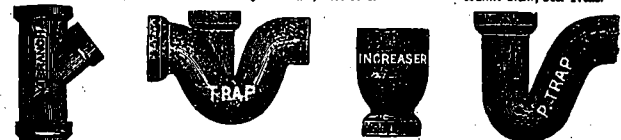
**NOTICE.**

We do not handle any of the cheap grades of Scotch Pipe which are offered in the market to-day. All our stock is made up of first-class Ohio (American) and Standard (Canadian) pipe, all of which is made from fire-clay, highly vitrified and salt-glazed, and have stood the severest strain and smoke tests, and will not decay in the ground by sewer gas.

A. E. CARPENTER, Pres.

J. H. New, Vice-Pres.

HENRY NEW, Sec.-Treas.



**THE HAMILTON AND TORONTO SEWER PIPE CO. (LIMITED)**

HAMILTON, CANADA,

Successors to THE CAMPBELL SEWER PIPE CO. and the HAMILTON SEWER PIPE CO.

— MANUFACTURERS OF —

Steam Pressed, Salt-Glazed, Vitrified

**SEWER PIPE**

Flue Pipes, Chimney Tops and Smoke Preventives.

ESTABLISHED 1860.