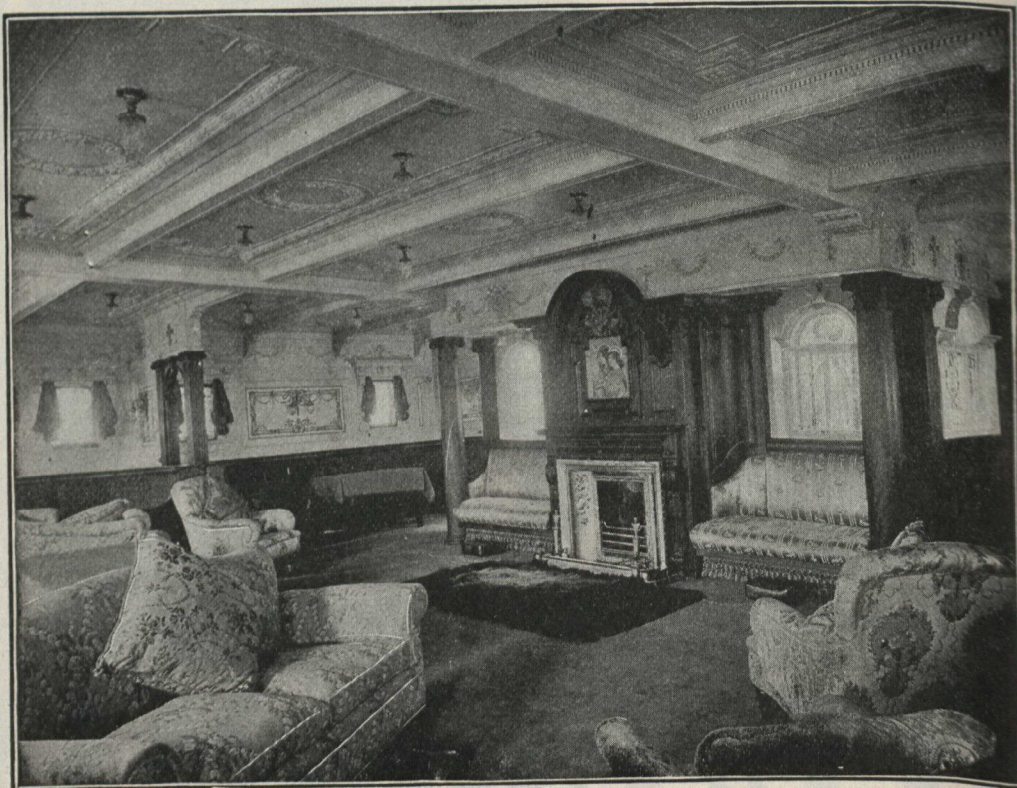


ALLAN LINE

ROYAL MAIL STEAMERS
TO LIVERPOOL



DRAWING ROOM—ROYAL MAIL STEAMER VIRGINIAN

FAST ELEGANT SAFE STEADY

THE above picture may convey an impression of the beauty of the decorations of the new Allan Line Steamers; it does not, and can not portray adequately this apartment when its dimensions are illuminated by the clusters of artistically arranged electric lights. The smoking room, library, children's play room and the grand Saloon are all of the same order, differing only in the purpose for which each is planned. The promenade decks—there are three—are each 260 feet long and 60 feet wide at the widest part. The steamers are floating hotels of the highest class, combined with speedy and practically unsinkable ships. They are built of steel and in 22 separate water-tight compartments. The Turbine Engines give them steadiness of motion with entire freedom from vibration. His Royal Highness Prince Arthur of Connaught and suite crossed on the "Virginian," and expressed themselves as delighted with the steamer and her accommodation. Two new steamers now building, "Corsican" and "GRAMPIAN," will be added to the fleet for the summer of 1907. "Virginian's" record passage is 5 days, 14 hours.

For sailings, rates, etc., apply to any agent or

H. & A. ALLAN, Montreal