

It is Humiliating

To anyone, under any circumstances, to be unable to meet their business obligations, but more especially to the farmer whose land has given him a good crop and whose only plea is that it was **hailed out**. His creditors may carry him over, but knowing that he could have protected himself against such disaster at trifling cost, and that he will have the obligations of two years to meet out of his next crop, with possibly a similar experience to relate, their own interests will prompt them to put him down as improvident and a poor mark for further credit.

Why take any chance of being placed in this humiliating position?

The CENTRAL CANADA INSURANCE CO.

Will insure your crops against loss from hail at a low rate of premium, and guarantee prompt payment of indemnity. That you have never lost a crop by hail does not protect this one. Do you carry no fire insurance because you have never had a fire? Every season brings surprises and disappointments to those who depend on what has been. Prepare for what may be.

Lock the stable before the horse is stolen.

The CENTRAL CANADA is the only company doing Hail Insurance in Western Canada under a contract that absolutely guarantees payment of loss within a stated time and in full, and has a record for fulfilling the conditions of the contract to the letter. If you want indemnity for your loss paid when 100 cents will pay a dollar of your obligations, insure with the CENTRAL CANADA. If you are satisfied to get it at some indefinite time in the future, with interest accruing on your debts in the meantime, insure with a company that does business that way. That is your privilege.

Head Office:
BRANDON, MAN.

JOS. CORNELL,
Manager.

U S U S U S U S U S U S U S U S U

A PROFITABLE FARM MACHINE
Cream represents cash. Be sure then to buy the Cream Separator that skims the closest—that gets all the cream possible.



THE U. S. CREAM SEPARATOR

takes out more cream than any other because of the unique construction of the bowl.

AN EXCLUSIVE FEATURE

Only two simple parts inside the bowl, one fits into the other, both fit into the steel bowl shell. When put together there are three bowls in one. No other separator has this advantage, and that is why no other can skim as close as the U. S. Our free booklet fully explains and illustrates this feature. It shows, too, the easy-to-fill milk tank, the enclosed light running gears, and self-oiling device found in the U. S. It makes mighty interesting reading. Drop us a line now while the matter is fresh in your mind, and we will send you the booklet by return mail.

VERMONT FARM MACHINE CO., BELLOWS FALLS, VT.
PROMPT DELIVERIES. 18 DISTRIBUTING WAREHOUSES IN U. S. AND CANADA

U S U S U S U S U S U S U S U S U

ALBERTA LAND CO.

HEAD OFFICE
818 CENTRE ST.
CALGARY, ALTA

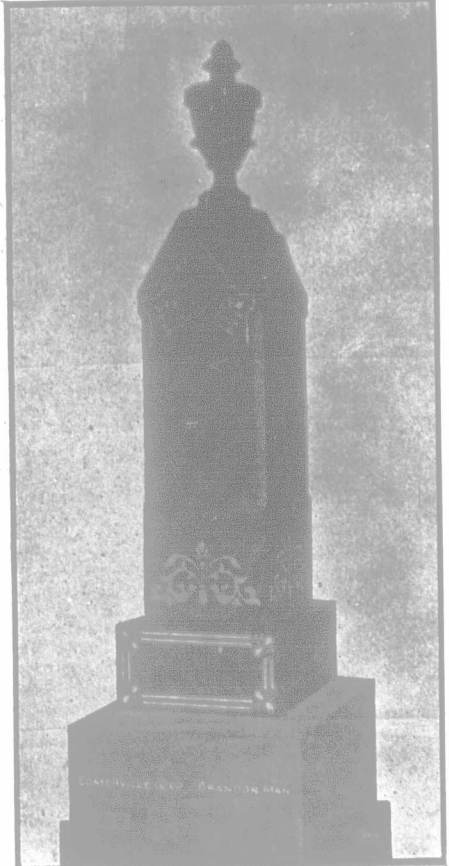
OUR LANDS ARE IN THE
WINTER WHEAT BELT
OF ALBERTA—WHERE GOOD
HOMESTEADS ARE STILL AVAILABLE

PRICES \$5 TO \$12 PER ACRE.

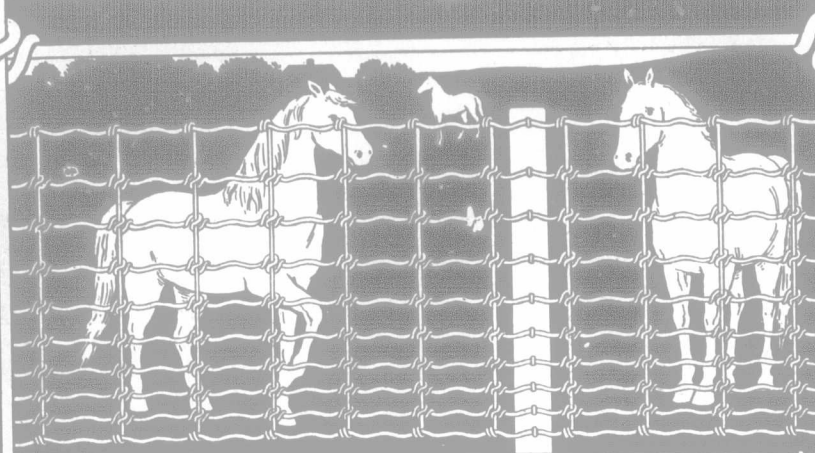
WRITE US
FOR SAMPLES OF GRAINS
AND INFORMATION PROMPT REPLIES.

DONALD MORRISON & CO., GRAIN COMMISSION.
416 Grain Exchange, WINNIPEG.
Licensed, Bonded. Reference, Bank of Hamilton, Exchange Branch.

MONUMENTS



For prices and best work, write
The Somerville Steam Marble
& Granite Works, - - Brandon



Will Last a Lifetime

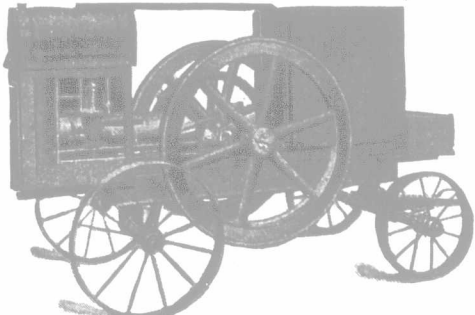
We want every farmer to send for our Catalogue. We can't tell you all about the "Ideal Fence" in this advertisement. We can only say that it is made of best No. 9 hard steel galvanized wire throughout, with the famous Ideal lock that cannot slip; that it cannot be pushed down from above, rooted up from the bottom, or buckled in the middle; that it is a good, strong fence, which will last long, always look well, won't get out of order, and save the farmer money, time and trouble. We believe it is absolutely the best fence ever built.

A one-cent postal card will bring you our **FREE** catalogue explaining all about the "Ideal Fence." Write for it to day.

The MCGREGOR-BANWELL FENCE CO., Ltd., Walkerville, Ont.
MERRICK, ANDERSON & CO., Winnipeg, Sole Agents Manitoba and N.-W.T.

The Flour City GASOLINE ENGINES

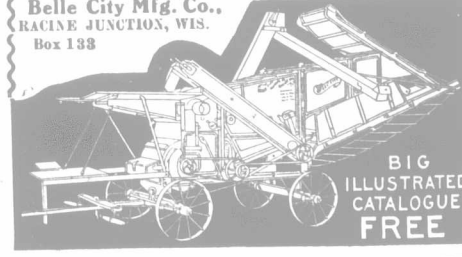
TRACTION = PORTABLE = STATIONARY



KINNARD-HAINES CO.
MINNEAPOLIS, MINNESOTA

Save all the Grain

Belle City Small Threshers are so low priced the farmer can own one and thresh any kind of grain when it is ready, at less cost than to stack it. Light enough to take anywhere; strong enough to do any work. Compact, durable, guaranteed. Big illustrated catalogue free. Send for it.



Belle City Mfg. Co.,
RACINE JUNCTION, WIS.
Box 138

BIG ILLUSTRATED CATALOGUE FREE

Advertise in the Advocate

CARNEFAC STOCK FOOD

IS RECOMMENDED FOR CALVES

In answering any advertisement on this page, kindly mention the FARMER'S ADVOCATE.