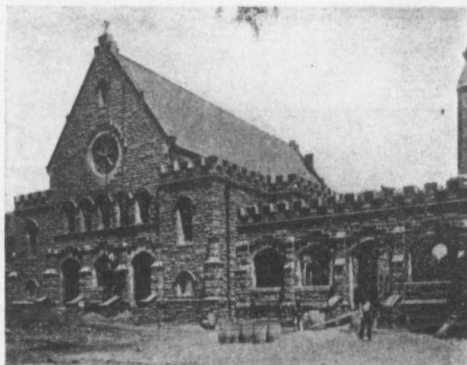


CALIFORNIA CEMENT STONE

EVERYTHING IN CONCRETE ACCORDING TO SPECIFIED DESIGN



Presbyterian Sunday School, Pasadena, California.
Built by the California System.

No other System on the market for the manufacture of cement stone can duplicate the work produced by the **California System**.

Our rock face stone are made on composition patterns, taken direct from the natural stone, and preserve the clean sharp angles and natural texture.

The **California System Produces**—Plain wall stone, in real random or coursed ashlar, in smooth, pitch, bush hammered or any face desired, in white, red, buff, natural or any color specified.

The **California System Produces**—Ornamental work of all kinds, friezes, belts, balusters, capitals, crockets, enrichments.

It Produces—Landscape decorations for parks and estates.

We Install the **California System** anywhere under **Positive Guarantee** that it will give all the results that we claim for it.

We Erect Large Buildings any place where our system has not been installed.

We Supply Moulds according to Designs submitted for any work that you have in hand.

OUR MOTTO—Each and every piece of work different, made practical by the low cost of operating by the California System.

WRITE US FOR PARTICULARS

CANADIAN CONCRETE MACHINERY COMPANY

LIMITED

OFFICE: 510 BOARD OF TRADE BUILDING, TORONTO, ONT.