

The HART-PARR WAY

with "THE MODERN FARM HORSE"

LEADS TO THE LARGEST SUCCESS IN FARMING

WHAT IS "THE HART-PARR WAY"?

This natural question deserves a definite answer.

The HART-PARR way of farming means to plow 20 to 30 acres per day; to disc and seed 40 or 50 acres per day; to break 15 to 20 acres per day; to harvest a 24 foot swath every time around the field; to thresh 1500 to 2000 bushels per day, and every day, whether the wind blows or not; to haul 600 bushels of wheat to the siding or elevator at one trip and at low cost; to



TUXFORD, SASK.

get the fall plowing all done in good time before freezing, so that the land is ready for early sowing and a big crop next year; to have absolute dependable power for running grinder, saw-mill or other machinery in winter time—to have a power that isn't stalled by wet weather, that doesn't injuriously pack the soil; that doesn't require frequent repairs—and a power that has conclusively proven its reliability and profitability.

WILL YOU TAKE THE EVIDENCE OF OVER A THOUSAND USERS?

HERE'S AN EXAMPLE

Moose Jaw, Sask., Nov. 10, 1908.

Hart-Parr Co.
Portage la Prairie, Man.

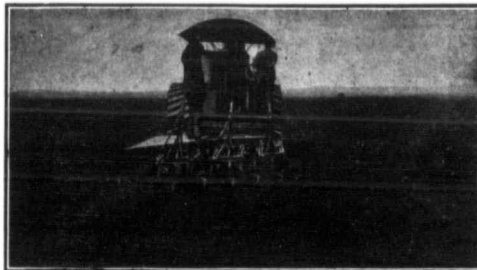
Dear Sir:

I beg to be allowed to say a few words in favor of your Gasoline Engine. I think I am safe in saying it is the finest engine on the market to-day, both for plowing and threshing, and as for being easy to operate and kept in running condition, it has no equal.

My engine is a 22 tractive (45 brake) H.P. and with a Case machine we threshed 1200 bushels of wheat in less than six hours; our average run was 1300 bushels per day. Anyone wishing to purchase a plowing or threshing engine, I advise them to get an engine that has been tried and tested and has met with success everywhere.

Yours truly,

W. H. Cathcart.



HERE'S ANOTHER

Macleod, Alta., April 22, 1908.

The Chapin Co.,
Calgary, Alta.

Gentlemen:—

The Hart-Parr plowing engine we bought of you more than does what you claim for it.

We are pulling six 14 in. John Deere breakers in the toughest prairie soil, and the engine is doing its work with ease although the ground is very hard and stony and we are plowing from 4 to 5 inches deep. Both plows and engine are working very satisfactorily.

We would be pleased to answer any inquiries from intending purchasers or to show them the outfit in operation.

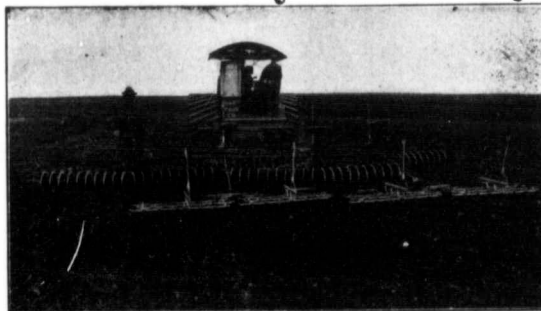
We are,

Very truly yours,
Carleton Bros.

The experience of HART-PARR users assures you that in getting the HART-PARR you get, not an experiment, but the result of experience

HART-PARR ADVANTAGES

- No expensive engineer required and no fireman
- No water to haul
- No grate bars to burn out
- No early morning firing



HART-PARR ADVANTAGES

- Double cylinders insure steady motion
- Dust proof, insuring durability
- Oil-cooled—free from water troubles
- Uses 11 cent kerosene—lowers the cost of fuel

THIS POWER WILL MAKE MONEY FOR YOU AS IT DOES FOR OTHERS

Our Catalogue is yours for the asking.

Write to-day.

HART-PARR CO. PORTAGE LA PRAIRIE

Manitoba

Alberta Agents: THE CHAPIN CO., CALGARY, Alta.