

# EATON'S

THE STORE THAT MAKES A HABIT OF GIVING SATISFACTION WITH EVERY PURCHASE

## LATEST STYLES IN WOMEN'S SUITS

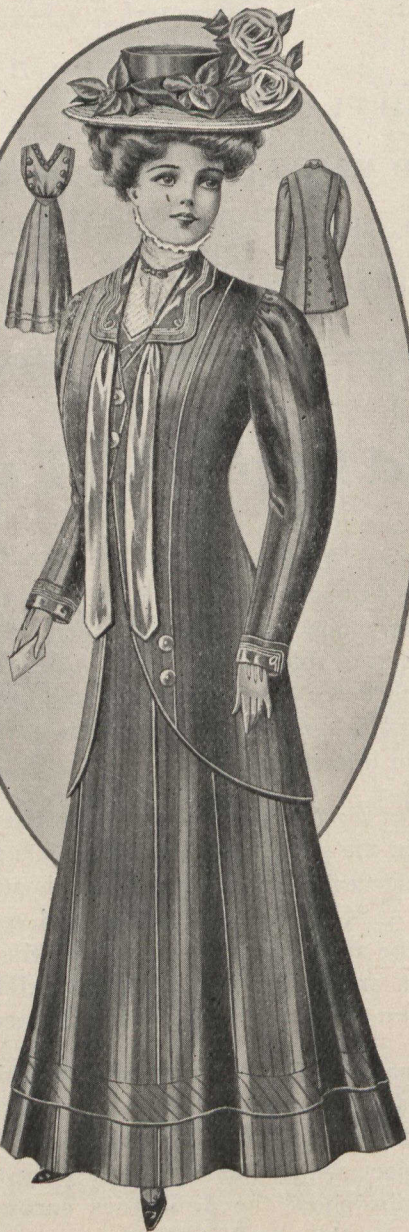
J-6400

**18<sup>50</sup>**

J-6400. Made of imported fancy striped worsted. Coat is made 32 ins. long in semi-fitting design, with taffeta silk lining; has braid trimming under the arm giving Empire effect; soutache braid and buttons are also used as a trimming on the cuffs. Coat has Directoire flaps and slashed sides. Skirt is nine gore circular flare style with buttons and silk soutache braid trimming. Choice of colors, black, navy, brown or smoke grey..... **18.50**

Sizes for ready-to-wear suits are:  
 Bust 32 in. with waist 23 Bust 34 in. with waist 24  
 " 36 " " 25 " 38 " " 26  
 " 40 " " 28 " 42 " " 29  
 Choice of skirt lengths 38, 39, 40, 41 or 42 inches.

J-4200. Latest New York style three-piece effect suit of soft finished, striped worsted suiting. Can be worn with or without the coat as desired. Waist is attached to the skirt belt; has low neck and no sleeves; is finished around the yoke with silk, trimmed with silk soutache braid; front is trimmed with large flat buttons. Skirt is circular gored style. Coat is cut-away front style with semi-fitting back; is lined with striped mercerized venetian; collar and cuffs have inlay of taffeta silk trimmed with soutache braid; has silk ties and silk edged button holes. Choice of colors, black, navy or brown. Price..... **17.50**



J-4200

State Size and Color when ordering

J-3921

**18<sup>50</sup>**

J-3921. Made of satin finished Venetian Cloth. Coat is semi-fitting design, lined with taffeta silk; has collar of satin; fronts and cuffs trimmed with buttons and satin. Skirt is made in Directoire effect with button trimming; has thirteen gores in circular design with a fold of self around the bottom. Choice of colors, black, navy or brown. Price..... **18.50**

Ready-to-wear Women's Garments can be supplied only in regular stock sizes as stated. When ordering be sure the size and color you require is catalogued.

To be becomingly dressed at a moderate cost is the womanly ideal. Its on the basis of supplying wanted clothing at inviting prices that this store satisfies customers, then if you don't like the goods we cheerfully return the money

Out of town customers should shop through our catalogue.

**THE T. EATON CO. LIMITED**  
 TORONTO - CANADA

The new Spring Catalogue is ready.