

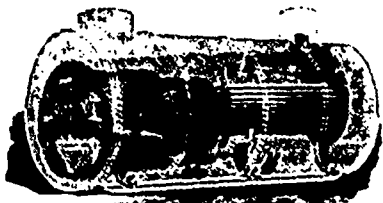
## INSTRUCTION & MAIL

In Architecture,  
Architectural Drawing,  
Plumbing, Heating and Ventilation  
Bridge Engineering,  
Railroad Engineering,  
Surveying and Mapping,  
Mechanics,  
Mechanical Drawing,  
Mining,  
English Branches, and

### ELECTRICITY

Diplomas awarded. To begin students need only know how to read and write. Send for Free Circular of information stating the subject you think of studying to The Correspondence School of Mechanics and Industrial Sciences, Scranton, Pa.

## 4000 STUDENTS.



## MONARCH ECONOMIC BOILERS

More Economical than Brick-set Boilers, with all advantages of light portable forms.

### Robb Engineering Co.

(LIMITED)

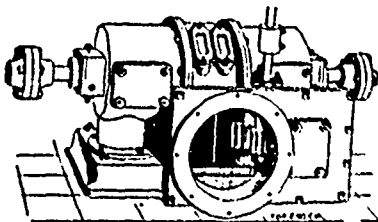
AMHERST, - NOVA SCOTIA.

## TENDERS WANTED

A Weekly Journal of advance information and public works.

The recognized medium for advertisements for "Tenders."

CANADIAN CONTRACT RECORD  
TORONTO.



HORIZONTAL TYPE.

## Little Giant Turbines

WATER WHEELS FOR ALL PURPOSES

HORIZONTAL OR VERTICAL

Water Wheel Governors, Machine Dressed Gears, Pulleys, Shafting, Hangers, Etc.

Write for Catalogue and Gear Lists.

J. G. WILSON & Co., GLENORA, Ont.

## THE STEAM BOILER & PLATE GLASS INSURANCE COMPANY OF CANADA

Head Office:  
LONDON.

DIRECTORS:

E. Jones Park, Q.C.  
President.

F. A. Fitzgerald, Esq.  
Vice-President.

Hon. David Mills, M.P.



DIRECTORS:

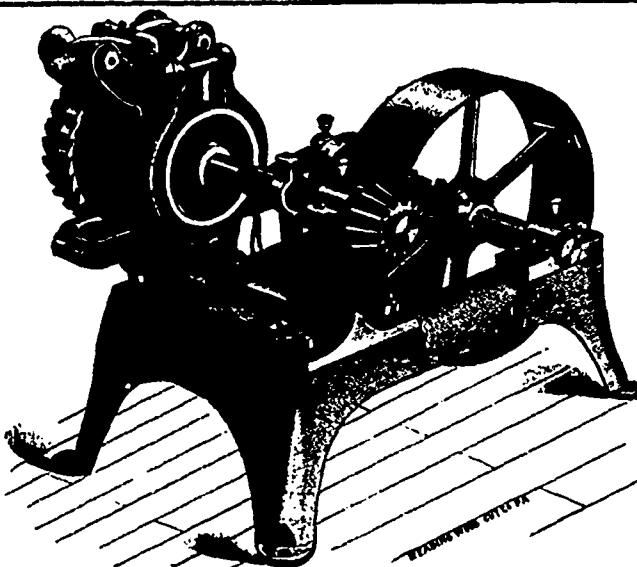
John Morrison, Esq.

T. H. Pardom, Esq.

JAMES LAUT,  
MANAGER.

J. H. KILLEY, Consulting Engineer.  
Subscribed Capital, \$200,000.

JOHN FAIRGRIEVE, Chief Inspector.  
Full Government Deposit.



## ELECTRIC WATERWHEEL GOVERNOR

PATENTED.

Variations in speed detected by fast running, sensitive Governor Balls. Gate movement instantly set in operation by electric current. Quick and powerful action.

Write for particulars.

### WM. KENNEDY & SONS

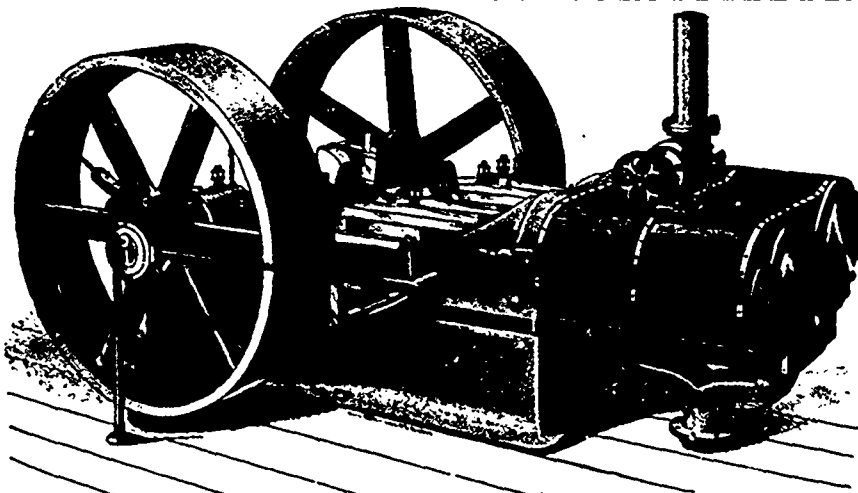
Owen Sound, Ont.

## THE CANADIAN LOCOMOTIVE & ENGINE CO., Ltd.

KINGSTON, - ONTARIO.

MANUFACTURERS OF

## Locomotive, Marine and Stationary Engines



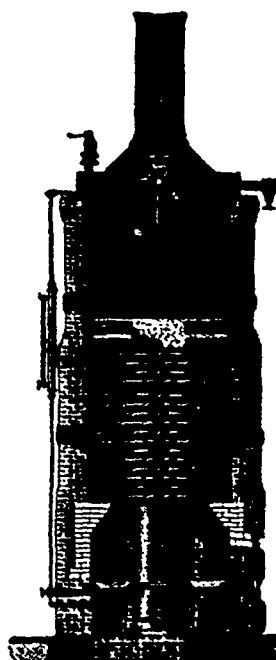
ARMINGTON & SIMS' HIGH SPEED ENGINE FOR ELECTRIC LIGHT PLANT, ETC.

### NOTICE.

The Canadian Locomotive & Engine Co., Limited, of Kingston, Ontario, have the exclusive license for building our Improved Patent High Speed Engine for the Dominion of Canada, and are furnished by us with drawings of our latest improvements.

PROVIDENCE, R. I., Nov. 18th, 1889.

(Signed) ARMINGTON & SIMS.



## THE HAZLETON BOILER.

The  
Handiest,  
Safest,  
and  
Most  
Economical  
Boiler.

### "CYCLE" GAS ENGINE

IMPULSE EVERY REVOLUTION without a separate pump. NO SLIDE.

Descriptive Catalogues of the above on application.