

BUYERS' DIRECTORY

ACCOUNTANTS.

Gamble & Gladwell.
Ross, H. J.
Stein & Co.

AIR COMPRESSORS.

Belliss & Morcom.

ARTIFICIAL STONE.

Roman Stone Co.
Morrison Co., T. A.

AUTOMATIC TELEPHONES.

Canadian Machine Telephone Co.

BARRISTERS.

Lighthall & Harwood.

BATTERIES, DRY.

Canadian Independent Telephone Co.

BELTING.

McLaren Belting Co., J.C.

BOILERS.

Babcock & Wilcox.
Robb Engineering Co.
Waterous Engine Works Co.

BONDS, ETC.

Bank of Montreal.
Bank of Ottawa
Bank of Toronto.
Brent, Noxon & Co.
Canada Securities Corpor'n.
Can. Bank of Commerce.
City & District Savings Bank.
Dominion Bond Co.
Domion Securities Corp.
Imperial Bank.
Merchants Bank.
Ross, H. J.
Wood, Gundy & Co.

BRIDGES.

Canadian Bridge Co.
Cleveland B. & Eng. Co.
Dominion Bridge Co.
National Bridge Co.
Structural Steel Co.

CABLES.

Brit. Insulated Co.
Can. Indep. Telephone Co.
Imperial Wire & Cable Co.
Phillips Elec. Works, E.F.
Standard Underground Cable Co. of Canada, Ltd.

CAST IRON PIPES.

Can. Iron Corporation.
Canadian Fairbanks Morse Co.

CEMENT,

Canada Cement Company.

CONCRETE STEEL DAMS.

Ambursen Hydraulic Const. Co.

CONCRETE MIXERS.

Canadian Fairbanks Morse Co.
London Concrete Machy. Co.
Mussens, Limited.
Wettlaufer Bros.

CONCRETE

REINFORCEMENT

Can. Wire & Iron Goods Co.
Garrioch, Goddard & Co.

CULVERTS.

Pedlar People.

DUST PREVENTIVE.

Barrett Mfg. Co.

ELECTRIC MOTORS.

Garrioch, Goddard & Co.
Northern Elec. & Mfg. Co.

ELECTRIC WIRE.

Can. British Insulated Co.
Canadian Indep. Teleph. Co.
Canadian Machine Teleph. Co.
Imperial Wire & Cable Co.
Phillips Electrica Works, E.F.
Standard Underground Cable Co. of Canada, Ltd.

ELECTRICAL SUPPLIES.

Northern Elec. & Mfg. Co.

ENGINES.

Babcock & Wilcox
Bellis & Morcom.
Robb Engineering Co.
Waterous Engine Works Co.

ENGINEERS &

CONTRACTORS.

Aqueducts, Limited.
Austen & Chappdelaine.
Barrow, E. G.
Bayfield & Archibald.
Beaubien, De Gaspé.
Bowring & Logan.
Bowman & Connor.
Brandeis, Charles.
Brown, W. M.
Burnett, Geoffrey K.
Can. Inspection and Testing Laboratories.
Cartwright, Mathieson & Co.
Chipman & Power.
Cleveland & Cameron.
Dietrich, W. N.
Dutcher, Foreman & Gregory
Fairchild, Jones & Taylor.
Francis, Walter J. & Co.
Frew, J. F.
Fuce & Scott.
Galt Eng. Co., The John Higman & Doctor.
Isdale, John S.
Jacobs & Davies, Incp.
Keefer & Keefer.
Laurie & Lamb.
R. S. Lea and H. S. Ferguson
Leofred, A.
Mace, T. Harry.
Mather, Yuill & Co.
McConnell, B. D.
McCulloch, A. L.
Moon & Silvertown
Murphy & Underwood.
Murray, T. Aird.
Phillips, Stewart & Lee.
Potter, Alex.
Ross & Co., R. A.
Smith, Kerry & Chace.
Surveyer & Frigon.
Topp, Charles H.
Wright, P. Mortin.
Young, C.R.

ENGINEERS, TELEPHONE.

Clement, Edw. E.
Dagger, F.
McMeen & Miller..
Zabel, Max. W.

ENGRAVERS.

Amer. Bank Note Co.

FIRE ALARMS.

Northern Elec. & Mfg. Co.

FIRE DEPT. SUPPLIES.

H. K. Martin.
Waterous Engine Works Co.

FIRE ENGINES.

Waterous Engine Works Co.

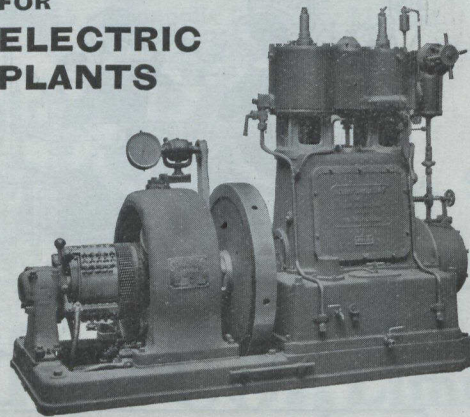
GAS ENGINES.

Can. Fairbanks-Morse Co.

ROBB

VERTICAL
ENCLOSED
ENGINES

FOR
ELECTRIC
PLANTS



INTERNATIONAL ENGINEERING WORKS, Ltd.

Owners of works formerly of

ROBB ENGINEERING CO.,

Works: Amherst, N.S., Canada, So. Framingham, Mass.

DISTRICT OFFICES:

Canadian Express Building, Montreal,	R. W. Robb, Manager
Traders Bank Building, Toronto,	Wm. McKay, "
Union Bank Building, Winnipeg,	W. F. Porter, "
Grain Exchange Building, Calgary,	J. F. Porter, "

SOLE CANADIAN AGENTS FOR

C. A. Parsons & Co., Newcastle-on-Tyne

Turbines, Turbo-Electric Generators, Turbo Pumps & Compressors

39-11

THE DOMINION WOOD PIPE COMPANY

LIMITED

New Westminster, B. C.

Manufacturers of

DOUBLE WIRE WOUND



AND

Cast Iron Specials, Valves, Hydrants, Etc.

WELL DRILLING

TOWN WELLS A SPECIALTY

We have the latest scientific instruments for locating subterranean water courses before drilling.

If you need water, you need us.

SASKATCHEWAN WELL DRILLING CO.

ROULEAU, SASK.