

**SMITH'S PURE FRUIT JAMS.**

Strawberry, 12 oz. and 1 lb.  
Raspberry, 12 oz. and 1 lb.  
Gooseberry, 12 oz. and 1 lb.  
Peach, 12 oz. and 1 lb.  
Red Currant, 12 oz. and 1 lb.  
Black Currant, 12 oz. and 1 lb.

**SMITH'S PURE JELLIES,**

Red Currant,  
Grape,  
Quince,  
Crab Apple.

**A. & W. Smith & Co.,**  
Halifax, N. S.



**Double Strength  
Culvert Pipe a  
Specialty.**

**Canadian  
Sewer  
Pipe  
Co'y,**

HAMILTON, and TORONTO,  
—ST. JOHN, QUE.—

**Mining & Mill Supplies.**

**Valves,  
Fittings,  
Packing,**

**Steam Goods  
—of every—  
Description.**

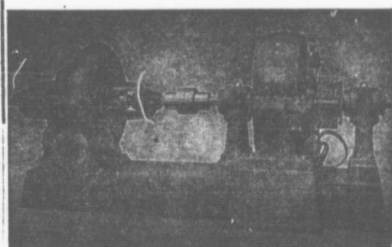


**Boiler  
Tubes,  
Steel  
Plates,  
Angles,  
Tees, etc.  
SOLID DIE  
RIVETS.**

**Iron Pipe for  
Mining Purposes.**

—Catalogues and Prices on Application.—

**THOMAS ROBERTSON & CO.,**  
—LIMITED,—  
**MONTREAL, QUE.**  
—Established 1852—



Westinghouse Motor Driving Jeanesville Centrifugal Pump.

**Westinghouse  
Motor Quality**

**Is a FACT, Not an Expectation.**

The inspection and tests given every part during every stage of manufacture, guarantee both quality and performance.

**Nothing is Left to Chance.**

**Canadian Westinghouse Co. Ltd.**

**General Offices: Hamilton, Ontario.**

ADDRESS NEAREST OFFICE FOR PARTICULARS.

Toronto—King and Yonge Streets,  
Montreal—Sovereign Bank of Canada Bldg.  
Halifax—134 Victoria St.  
Winnipeg—922-923 Union Bank Bldg.  
Vancouver—152 Hastings St.



**ONE  
MAN'S  
VIEW.**

A well-known mining man recently finished an inspection of the ANTHRACITE coal fields of Pennsylvania. When asked what impressed him most, he said

"The acidity of the water, and the fact that of all the pumps I saw there two out of three were Jeanesville Pumps."

An indication at least that we know how to handle the acid water problem.

When you send us the lift and quantity of water and the available power, we will send you complete information about what we can do for you.

Our bulletin No. 8, fresh from the printer, is full of up-to-date information. Write for it now before you forgo.

**Jeanesville  
Iron Works Co.,  
Hazleton, Pa.**