

SCHULTZ BROS.' WORKS, BRANTFORD, ONT.

Among the foremost contractors and planing mill operators in Canada, the firm of The Schultz Bros. Co. (Ltd.), of Brantford, Ont., may justly be placed. The senior members of the firm, the Schultz Bros. proper, were left orphans at an early age, but with a strong determination they

two rip saws, two cross saws, a band saw, a jig saw, two stickers, a jointer, a tenoning machine, two sand paperers, two boring machines, an emery wheel, a panel raiser, a shaper, a mortise machine, a blind slat tenoning cramping machine, a dowell machine, and a band saw setter and sharpener.

On the second and last floor is the mantel and

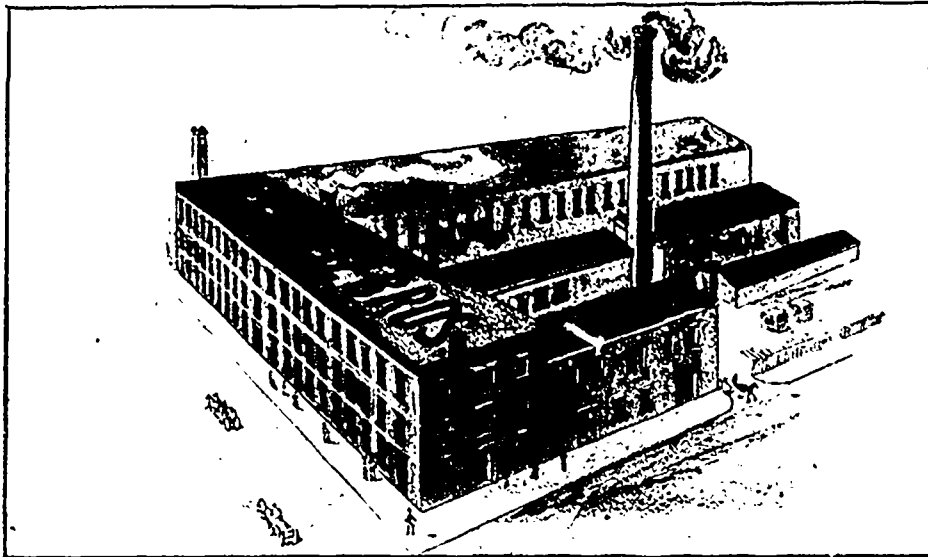
hardwood finishing department. This floor is also used for storage and show-room purposes. They turn out some handsome mantels, their carver being an artist of some ability. The firm manufacture the 'Daisy' washer, which has been placed in over 20,000 homes.

The officers of the firm are as follows: President, George Schultz; Vice-President, Wm. Schultz; Sec'y.-Treas, John F. Schultz; Mechanical Superintendent, Jas. G. Allan. They

dealers in Brantford, and their trade extends over a wide section. Owing to a rapidly increasing trade, they are about to enlarge their yards. The past year has been a very successful one to them, and the spring opens with a bright outlook.

NOVEL SYSTEM OF FLOATING LOGS.

The Remingtons, of Watertown, N.Y., who own a big saw mill and thousands of acres of spruce timber in the vicinity of Benson Mines, have a novel way of floating their logs and lumber from the mill to the railroad. Their sawmill is located on the hills three miles back into the country from the railroad, which is in a valley below. Carting was expensive. The Remingtons therefore constructed a trestle three miles long, and upon that placed two troughs, one for pulp logs and one for lumber. The troughs are: For pulp wood, 24 inches at the top and 10 to the bottom, having a depth of 20 inches; for lumber 12x12½. At the sawmill is a six inch centrifugal pump, and when the logs are ready for shipment they are placed in the trough, the pump started running, the troughs filled and the logs floated to the railroad, where there is a yard having 1,500 feet of track. The lumber runs out on the trestle and is loaded into the cars. The capacity of these carriers is 60 cords per hour of pulp wood, and 200,000 feet of lumber per day. Last spring the companies had a pile of pulp wood 1,000 feet long, 26 feet high and 40



SCHULTZ BROS.' MILL, BRANTFORD, ONT.

set to work doing odd jobs which came their way, saving their money, until now they are the leading contractors in Brantford, and rank high among those of the Dominion.

Their large three-storey building on Brant ave. is in the shape of an L. one portion being 132' x 35', and the other 132' x 60'. The mill yard is quite large, on which are erected dressed lumber sheds with a capacity of 10 cars, and a stable.

On West street, near the G.T.R. depot, is their wholesale lumber yard, covering two acres of ground. Mr. Wm. Schultz is in charge of this department.

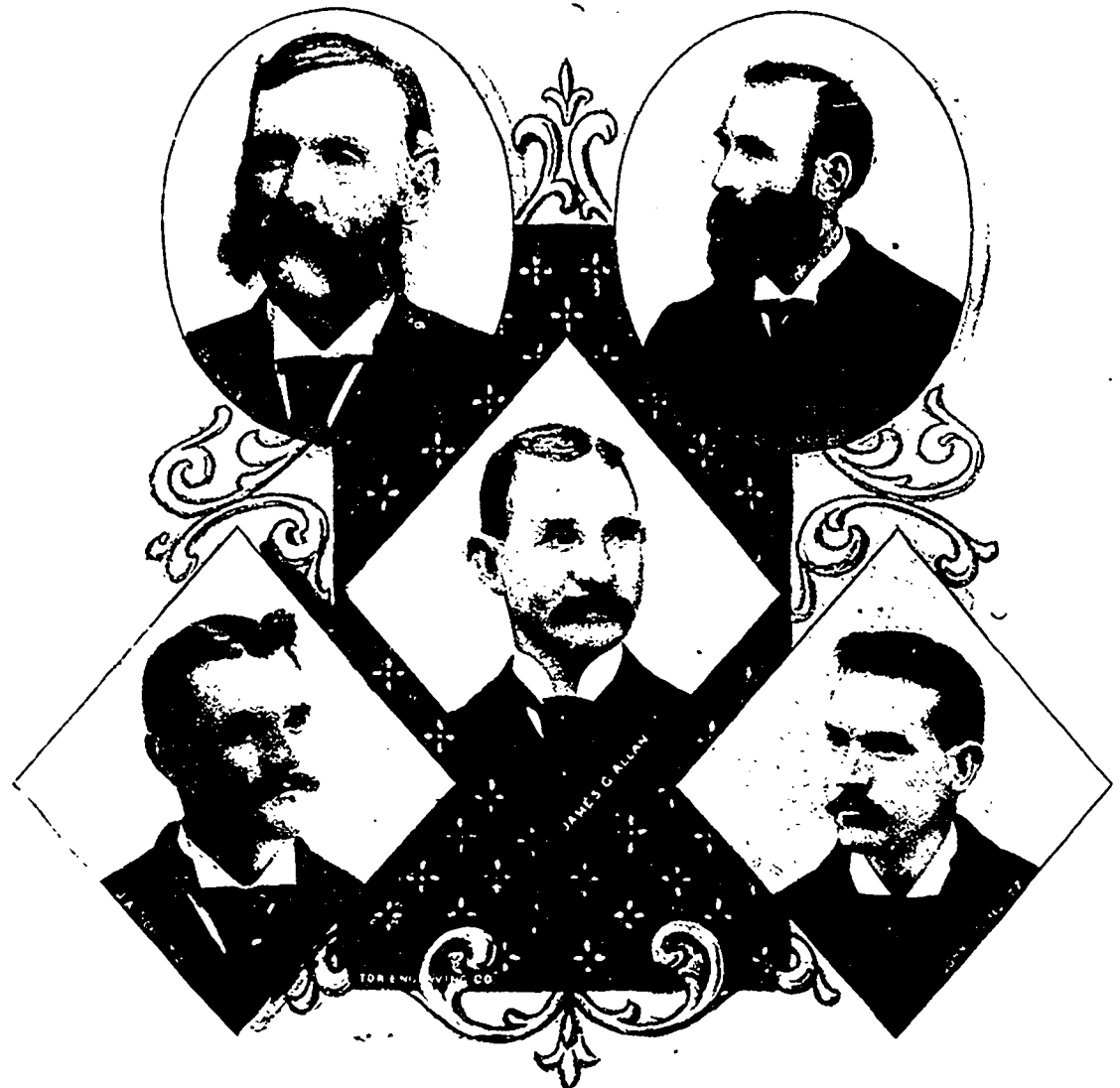
As this is one of the largest planing mills in Western Ontario, a brief description will prove interesting. On the ground floor all the planing, sawing, and heavy moulding is done. A tool room, where all the drilling, setting and sharpening is done, is on this floor. In this tool room is kept an extra set of knives, etc., for each machine, so that when a knife is being sharpened the machine need not be idle. A two-storey dry kiln with a capacity of 20,000 feet is on this floor, as is also the box making department, which turns out 100,000 boxes per annum. In an annex at the angle of the L is situated the engine and boiler room. A 100 h.p. Goldie & McCulloch boiler supplies steam to a 75 h.p. Wheelock engine, receiving its hot water from an Auslin heater. Steam and plunger pumps are used. The engine has been running for nine years without a cent of cost for repairs. The machinery on the ground floor comprises four planers, three stickers, a re-saw, six rip saws, a printing machine for box department, a turning lathe, a sand-paperer, a suction fan, a blower for the dry kiln, with the hot blast system with Sturtevant kiln.

On the first floor is done all the light moulding. The sash and door department is also on this floor. Their veneer doors are shipped to different parts of the country. Mr. Jas. G. Allan, the mechanical superintendent, has his offices on this floor. The machinery on the floor is made up of

recently built the Expositor and I.O.O.F. buildings in Brantford, and among one of their large jobs was the making of the bicycle track at Mohawk park. They are the chief wholesale

feet wide, all of which has been carried by this scheme.

A company is being formed to erect a pulp mill at Richibucto, N. B.



THE FIRM OF SCHULTZ BROS., BRANTFORD, ONT.