

## CHESS.

The proprietors of THE CRITIC offer two prizes to consist of books on Chess—to those subscribers who shall send in the greatest number of correct solutions during the current year. No entrance fee required. All communications for this department should be addressed—**CHESS EDITOR,** Windsor, N. S.

## TO CORRESPONDENTS.

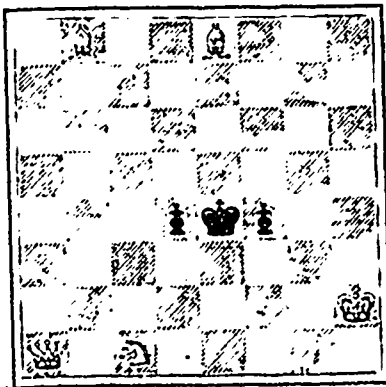
*Quebec Chronicle.*—Your issues of March 22nd, April 26th, 3rd and 10th inst., have not yet been received.

*Toronto Week.*—Issues of 5th and 26th ult., and 20th inst., have not yet been received.

Solution to Problem 29.—Q to K sq., etc.

(Correct solutions received from Rev. C. E. Willets, L. M. Wilkins, H. B. Stairs, Mrs. H. Moseley, W. J. Calder, C. Cutbill, Dr. E. S. Creed, J. W. Wallace, and F. W. Beckman.)

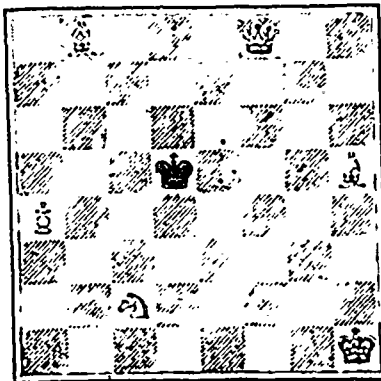
PROBLEM No. 32.  
From "Chess Fruits."  
BLACK.



WHITE.

White to play and mate in 2 moves.

PROBLEM No. 33.  
From "Chess Souvenirs."  
BLACK.



WHITE.

White to play and mate in 2 moves.

Game played recently at the Liverpool Club.—From *Liverpool Courier*.

## MUZIO-CASCIO GAMBIT.

WHITE.

BLACK.

- |                   |               |
|-------------------|---------------|
| 1 P to K4         | P to K4       |
| 2 P to KB4        | P takes P     |
| 3 Kt to KB3       | P to KKt4     |
| 4 B to B4         | P to Kt5 (a)  |
| 5 Castles (b)     | P takes Kt    |
| 6 Q takes P       | Q to KB3      |
| 7 P to QB3 (c)    | B to R3 (d)   |
| 8 P to Q4         | Kt to K2      |
| 9 P to K5         | Q to B4 (e)   |
| 10 Kt to Q2       | QKt to B3 (f) |
| 11 Kt to K4       | Kt to R4 (g)  |
| 12 Kt to B6 (ch)  | K to Bsq      |
| 13 B to Q3        | Q to K3 (h)   |
| 14 Q to R5        | K to Kt2      |
| 15 R takes P (i)  | Kt to Kt3     |
| 16 Q takes B (ch) | K takes Q     |
| 17 R to R4 (ch)   | K to Kt2      |
| 18 B to R6 Mate.  |               |

(a) The attack in the Muzio is so

powerful that it is scarcely advisable for any but a first-class player to undertake the defence. It would be better to play 4 B to Kt3, which would leave black a pawn ahead, and a theoretically won game.

(b) Steinitz frequently, even in tournament play, used here to play 5 Kt to K5, a position known as the Salvio or Cochrane Gambit, according as black answers 5 Kt to KR3 or 5 P to B6. The books agree in considering the game as lost for white—only, unfortunately for them, Steinitz generally won. The text move initiates the strongest attack, 5 P to Q4 and 5 Kt to B3 ranking next, while 5 B takes P (ch) is very weak.

(c) The book move is 7 P to K5, the variations consequent upon which have been well thrashed out by L. Paulsen and Zukertort, the result being in black's favor. We do not care much for the text, but we believe 7 P to Q3, known as the Russian attack, will require considerable attention from future analysis. The following is the continuation.—7 P to Q3; B to R3, 8 B takes P; B takes B, 9 Q takes B; Q takes Q, 10 R takes Q, etc., and black's KBP cannot be saved. White, moreover, will soon play Kt to B3, and bring both rooks to bear.

(d) Black's defence has too much "routine" about it. The correct move is 7 Kt to QB3; and if 8 P to Q4, then 8 Kt takes P.

(e) If 9 Q to B3, the answer might be 10 Q to R5; Q takes B, 11 Q takes B, etc.

(f) If 10 Castles, 11 Kt to K4; B to Kt2, 12 B to Q3; Q to K3, 13 Kt to R6 (ch); B takes Kt, 14 Q to R5; R to K, 15 Q takes P (ch); K to B, 16 P takes B; Q takes P, 17 B takes P and wins, is a likely variation.

(g) This is bad, but there is nothing better, unless it is 11 Kt to Kt3. He could never survive white's attack if he ventured 11 Castles.

(h) 13 Q to Kt4 might have delayed the fatal Q to R5, although white could then have won the exchange and a pawn by 14 Kt takes P (ch), etc.

(i) A remarkably fine move, and followed up in capital style. If black replies 15 B takes R, then 16 B takes B; P to KR3 (the only move), 17 Kt to K8 (ch); K moves, 18 Kt takes P, Q to QB3, 19 P to K6, and wins.

## DRAUGHTS-CHECKERS.

The proprietors of THE CRITIC offer two prizes—to consist of books on Checkers—to those subscribers who shall send in the greatest number of correct solutions during the current year. No entrance fee required. All Checker communications should be addressed to W. Forayth, 36 Grafton Street, Halifax.

We will give the solution of Problem 11 in our next issue.

## SOLUTIONS.

PROBLEM 23.—Solved by Mrs. H. Moseley and F. Foshay. Position:—Black men—2, 5, 10; 11, 12, k. 27; white men—13, 17, 18, 19, 20, 25; black to play and win.

- |        |       |        |          |
|--------|-------|--------|----------|
| 27—24  | 11—16 | 8—11   | 12—16    |
| (1) 18 | 14    | 20     | 11(2) 25 |
| 24—15  | 15—8  | 2—6    | 16—20    |
| 14     | 7     | 7      | 3        |
| 17     | 14    | b.     | wins.    |
| (1) 25 | 22    | (3) 14 | 7        |
| 13     | 9     | 9      | 6        |
| 24—15  | 2—11  | 11—16  | 8—3      |
| 18     | 14    | 17     | 14       |
| 20     | 11    | black  |          |
| 11—16  | 16—19 | 15—8   | wins.    |

- |        |       |       |        |       |      |             |
|--------|-------|-------|--------|-------|------|-------------|
| (2) 3  | 7     | 3     | 8(4) 8 | 12    | 21   | 17          |
| 11—16  | 16    | 19    | 15—11  | 24—28 |      |             |
| 7      | 3     | 25    | 21     | 17    | 14   | black       |
| 12—16  | 2—6   | 19—24 | wins.  |       |      |             |
| (3) 20 | 11    | 16—8  | 14     | 7     | 2—11 | black wins. |
| (4) 17 | 14    | 8     | 11     | 16    | 19   | 23          |
| 15—18  | 19—23 | 26—30 | 25—21  |       |      |             |
| 21     | 17    | 11    | 16     | 19    | 23   | black       |
| 18—9   | 23—26 | 30—25 | wins.  |       |      |             |

PROBLEM 24.—Solved by F. Foshay. Position:—Black men—1, 3, 5, 7, 8, 11, 13, 16, 17, 20; white men—10, 14, 18, 21, 22, 24, 26, 27, 30, 32; white to play and win. In giving this solution we also give the beginning of the game, so that our readers may see how the position was reached:

GAME VIII.  
"Bristol."

- |       |       |         |       |
|-------|-------|---------|-------|
| 11—16 | 11—16 | 9—13    | 7—14  |
| 24    | 19    | 25      | 21    |
| 8—11  | 6—9   | 7—11    | 1—10  |
| 28    | 24    | 23      | 18    |
| 16—20 | 16—23 | 12—16   | 5—14  |
| 22    | 17    | 26      | 19    |
| 9—13  | 4—8   | (a) 2—7 | 14—23 |
| 17    | 14    | 29      | 25    |
| 10—17 | 13—17 | 20—27   | 3—10  |
| 21    | 14    | 31      | 26    |
|       |       | 14      | 9     |
|       |       | 26      | 3     |

white wins.

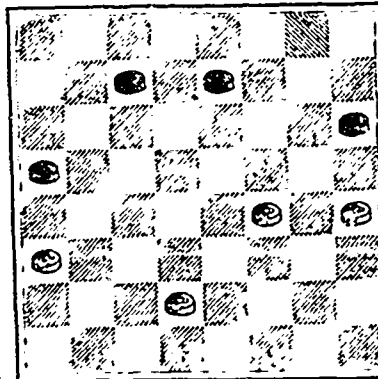
(a) This creates the position that forms Problem 24, and the following moves constitute the solution.

We take both of our Problems below from the *American Checker Review*, Chicago, Ills.

## PROBLEM 27.

By James P. Reed, Champion Blind-fold player of America.

BLACK.



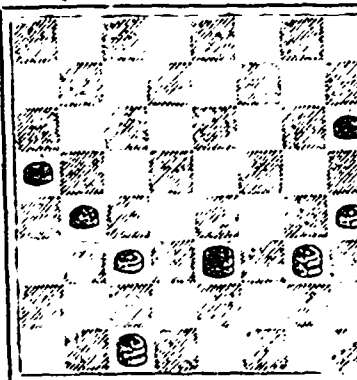
WHITE.

Black to play and draw.

## PROBLEM 28.

By Issiah Barber, Cambridgeport, Mass.

BLACK.



WHITE.

White to move and win.

Blank forms, (suitable for both Chess and Checkers), for copying down problems, positions, endings, etc. Fifty for 25¢, post free. Small sheets, numbered, and with appropriate headings, for recording games. Twenty-five for 15¢. For sale at CRITIC Office, Halifax.

## NOTICE.

Now ready for inspection at  
**DeWolfe's Show Rooms**  
The largest assortment of  
**CARRIAGES**  
Yet offered.  
A FEW of those SEVENTY-FIVE  
DOLLAR ones left.

CALL AND SEE AT  
**DeWolfe's Carriage Factory,**  
NORTH WEST COMMON, HALIFAX.

**ESSON & CO.,**  
Commission Merchants,

Importers and Wholesale Dealers in

American and West India  
Produce,

**TEAS, ETC.**

HALIFAX, NOVA SCOTIA.

## NATIONAL COLONIZATION LOTTERY

Under the Patronage of Rev. Father Labelle  
Established in 1844, under the Act of Quebec,  
32 Vict., Chap. 30, for the Benefit of  
the Diocesan Societies of Colonization of the Province  
of Quebec.

## CLASS D.

The 12th-Monthly Drawing will take place  
On WEDNESDAY, 16th May, 1888.

At 2 o'clock, p.m.

PRIZES VALUE, \$60,000.

## FIRST SERIES.

PRIZES VALUE.....\$50,000  
Principal Lot—1 Real Estate worth \$5,000.

## LIST OF PRIZES.

- |                              |         |      |
|------------------------------|---------|------|
| 1 Real Estate worth.....     | \$1,000 | \$50 |
| 1 Real Estate worth.....     | 2,000   | 50   |
| 10 Building Lots in Montreal | 300     | 50   |
| 15 Bedroom or Drawing-room   |         |      |
| Suites to choice.....        | 200     | 30   |
| 20 do do do                  | 100     | 25   |
| 100 Gold Watches.....        | 50      | 15   |
| 1000 Silver Watches.....     | 20      | 20   |
| 1000 do do                   | 10      | 10   |

2147 lots worth.....\$50,000

TICKETS \$1.00.

## SECOND SERIES.

PRIZES VALUE.....\$10,000  
Principal Lot—1 Real Estate worth \$1,000.

## LIST OF PRIZES.

- |                             |         |    |
|-----------------------------|---------|----|
| 1 Real Estate worth.....    | \$1,000 | 10 |
| 100 Gold Chains worth.....  | 40      | 40 |
| 1000 Toilet Sets worth..... | 6       | 50 |

1101 lots worth.....\$10,000

TICKETS 25 Cents.

Offers are made to all winners to pay the prize cash, less a commission of 10 per cent.  
Winners' names not published unless specially authorized.

S. E. LEFEBVRE, Secretary,  
19 ST. JAMES STREET, MONTREAL.

## PROTECTION

We must have, because if not protected from cold, chilly winds of January, the system is liable to a constitutional change, and the lungs become weakened and diseased, then wear a

## "Pine Balsam" Protector.

Filled with Fir Balsam, of great benefit to any with a lung trouble, by giving off its healing perities to the lungs, both by absorption and inhalation. These Protectors, along with Chesters, Polar Jackets, Elder Down Jackets, the French Flannel Jacket. But why gaudle them than to state that there is a full line of Protectors in stock at the LONDON DRUG STORE, 147 Hollis Street.

J. GODFREY SMITH,

Dispensing Chemist, Proprietor-Agent for LANCET'S Axis-Cut Pebble Spectacles & Eye-Glasses.

Printed by Halifax Printing Co.  
161 Hollis Street, Halifax, N. S.