

**THEO. HAMEL,**  
6 Sault-au-Matelot St., - Quebec,  
GENERAL AGENT OF THE  
*Asbestos Mining and Manufacturing Co.*  
OF CANADA.

**RAILWAY SUPPLIES.**

Asbestos Rope Packing,	Asbestos Self Lubricating
" Wick "	" Packing.
" Cement.	" Fire-Proof Paint.
" Sheeting.	" Mill-Board.
" Felt, etc., etc.	" Cloth for Locomo-
otive Boilers and Pipes,	Wiping Waste (a specialty).
Engineering Supplies. Use my Boiler Covering and	
save 33 1/2 per cent. on fuel. Buy my Fire-Proof Asbestos	
Boxes for Deeds, Silver-wart, Jewellery, etc., etc.	

**DYNAMITE.**

AND OTHER EXPLOSIVES

FINE CAST STEEL For Rock Drilling and all other Mining  
Material constantly on hand.

**McDOUGALL & CUZNER,**  
531 Sussex and 85 Duke Streets, - OTTAWA.

**STEWART & MAGRATH,**  
Provincial Land Surveyors,  
AND  
CIVIL ENGINEERS,  
Office:—Over H. F. MacCarthy's Drug Store,  
Wellington St., Ottawa, Ont.

**McVEITY & HENDERSON,**  
Barristers, Solicitors, &c.,  
Supreme Court and Departmental Agents,

**SCOTTISH - ONTARIO - CHAMBERS.**  
OTTAWA.

TAYLOR McVEITY. GEO. F. HENDERSON.

**FOR SALE**

Valuable Phosphate and other Mineral Lands,  
In the Township of Buckingham, County of Ottawa.  
Patent for Mineral Rights direct from the Crown.  
TITLE INDISPUTABLE.

5 1/2 of 25 in the 12th Range ..... 100 acres  
5 1/4 of 25 in the 11th Range ..... 100 acres  
Three lots, 26, 27, 28, in one Block, in the  
11th Range ..... 600 acres  
(adjoining Gore of Templeton.)

Also a Circular Saw Mill situated on lot 26, 11th  
Range, in good working order, and sufficient water  
power to drive two other mills of the same capacity.

About 30 thousand cords of fir wood, chiefly hard-  
wood, may be obtained on these said lots.

The lands are in close proximity to the celebrated  
Emerald, Little Rapids, and other richly productive  
mines in the great phosphate region. Recent prospecting  
has disclosed rich and extensive veins of the mineral.

The property is located one mile from the navigable  
waters of the Du Lievre River and nine miles from the  
Village of Buckingham, where the C. P. R., which  
two years ago built a branch line in order to secure the  
traffic of the industry, carries it to the port of Montreal.

Conditions and terms of sale may be known by apply-  
ing to the proprietor.

W. C. KENDALL,  
Bassin-du-Lievre,  
Ottawa County, Que.

W. Blakemore, F.G.S., M.E.,  
Member of I. & S.I. | A. Montgomery Evans, M.E.,  
of Canada & U.S.

**BLAKEMORE & EVANS,**  
MINING & CIVIL ENGINEERS  
Exchange Buildings, Cardiff, S.W.

LONDON OFFICE:  
Robert H. Jones, 82 Queen St., Cheapside, London, E.C.

Reports, Estimates, and Valuations made on Iron and Steel Works,  
Blast Furnaces, and all classes of Mining Properties

CANADIAN BUSINESS PROMPTLY ATTENDED TO.

Sir Alex. Campbell, K.C.M.G., | John L. Blaikie, Esq.  
Lieut.-Gov. of Ontario, Pres. Vice-Pres.

**THE BOILER INSPECTION**  
AND INSURANCE COMPANY OF CANADA.  
Consulting Engineers.

Boilers inspected periodically and their condition  
fully reported on.

HEAD OFFICE: - - - 2 TORONTO ST., TORONTO.  
G. C. ROBB, Chief Engineer.  
A. FRASER, Sec'y-Treas.

Valuable Iron Mine For Sale  
ON LAKE HURON.  
ALSO PHOSPHATE MINES.

**HUBERT C. JONES,** - Barrister,  
26 YORK CHAMBERS, TORONTO.

**COPPER LANDS FOR SALE**

300 acres undeveloped. For particulars, address

**ROBERT AFFLECK,**

Braeside, P. O., - - - Ontario.

**ORFORD COPPER CO.,**  
**COPPER SMELTERS.**

Works at Constable's Hook, N.J., opposite new Bright-  
ton, Staten Island. Copper Ore, Mattes, or Bullion  
purchased. Advances made on consignments for re-  
fining and sale. Specialty made of Silver-Bearing  
Ores and Mattes.

SELL

**INGOT AND CAKE COPPER.**

President, **ROBERT M. THOMPSON,**

Treasurer, **G. A. LAND.**

Office, 35 to 39 Wall Street, New York.

**Robin & Sadler,**  
MANUFACTURERS OF  
**LEATHER BELTING.**

TRY OUR

**Waterproof Belting,**

Just the thing for Mining Machinery.

MONTREAL, TORONTO,  
2518, 2520, 2522 Notre Dame St. 129 Bay Street.

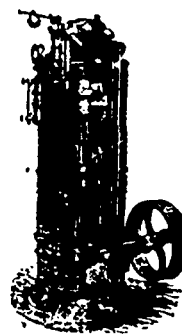
**E. H. SARGENT & CO.,**  
IMPORTERS AND DEALERS IN  
**ASSAYER'S MATERIALS,**  
Chemicals and Laboratory Supplies.  
125 State Street, CHICAGO.

**STEEL** IN STORE  
**"JESSOP'S"**

Standard Durable Cast Steel. Best value for consumers.  
Also Machinery Steel.

**A. C. LESLIE & CO.,**  
Montreal and Toronto.

**Ottawa Boiler and Bridge Works**



478 46-482 } OTTAWA { 476-478-480  
Maria St } Gloucester St.

**W. J. CAMPBELL & CO**

MANUFACTURERS OF  
STEAM ENGINES, BOILERS,  
TANKS, MINING PAILS,  
DUMP-CARS

And every description of Wrought  
Iron Work.

MINING WORK A SPECIALTY.

N.B.—Every Attention given to re-  
pairing by Experienced Workmen.

**J. T. DONALD, M.A.,**  
Analytical Chemist and Assayer,  
124 St. JAMES St. - MONTREAL.

Analyses and Assays of every description. Manufactur-  
ing processes practically tested. Laboratory instruction  
in Chemistry, Assaying and Mineralogy. Terms on  
application.

**Phosphate Mine Wanted.**

Must be partially developed and within easy hauling  
distance of a Railway or Water. Give full particulars,  
development done, size of Veins exposed, Locality, &c.,  
&c., to "F. R. S." care of THE CANADIAN MINING  
REVIEW, Ottawa.

**Superstitious Regard of Asbestos.**

Mr. R. H. Jones, of London, England, who  
has just published an interesting little brochure  
on "Asbestos: Its production and use; with  
some description of the Asbestos mines of  
Canada," is responsible for the following story:  
A labouring man, who had left the old country to  
seek a better fortune in the Dominion, found  
employment at once on arrival in one of the  
many leather yards on the St. Lawrence, where  
his energy and activity, supplemented by great  
bodily strength, soon secured him a good  
position. It so happened, however, that one  
evening, on returning from their daily toil to  
their common apartment, some of his fellow-  
workmen saw him deliberately throw himself  
into a seat, kick off his boots, and then pull off  
his socks, and having opened the door of the  
stove, coolly fling them in on to the mass of burn-  
ing wood. Possibly no particular notice would  
have been taken of this, judged as a mere act  
of folly and waste on the part of the new-  
comer; but when, almost immediately after-  
wards, they saw him open the stove door again,