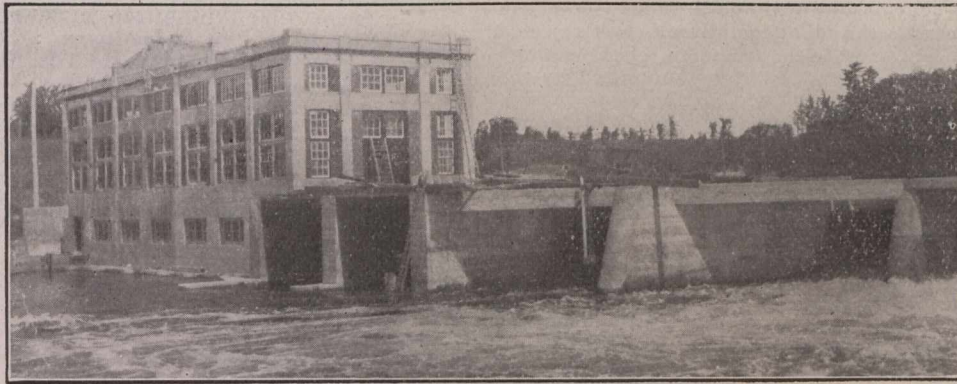


SOME OF THE WORK WE'VE DONE



DAM AND POWER HOUSE AT PETERBOROUGH, ONT.
(JUST COMPLETED)

WATER POWERS.

Raymondville Paper Company, Norfolk, N.Y.
Northern Aluminium Co. Shawinigan Falls, P.Q. (33,000 H.P.).
Peterboro Waterworks Dam & Pumping Station.
Sherbrooke Railway & Power Company. Dam and Power House, Sherbrooke, P.Q.

SEWERS AND WATER LINES.

6½ miles sewerage system, Massena, N.Y.
Sewers and Water Lines, St. Lawrence River Power Co., Massena, N.Y.
Sections 3 and 4, St. Denis 4' 6" Trunk Sewer (through rock), Montreal.
Water Works System, Preston, Ont.
Trunk Sewers, Woodstock, Ont.
Water Works System, Hespeler, Ont.

SUBWAYS, VIADUCTS.

Subway under 4 tracks C.P.R., Iberville St., Montreal.
Reinforced Concrete Viaduct and Tunnel, Windsor Station, Montreal.
Subway Chateau Laurier, Hotel to Station, Ottawa.

OFFICE, BANKS AND STATIONS.

Office and Printing Building, Montreal Gazette.
Office and Printing Building, Ottawa Free Press.

BRIDGES.

Bridge abutments, Moose Mountain Mines, Ont.
2 concrete arch bridges, Toronto, Ont.
2 concrete arch bridges, Norwich, Ont.

FOUNDATIONS.

Foundations, paper warehouse, Belgo. Co., Shawinigan Falls, P.Q.
Rock excavation and concrete foundations, Chateau, Frontenac, Quebec, P.Q.
300 Caissons average 38' to rock, tunnel, etc., Windsor Station, Montreal.
Montreal General Hospital, 90 Caissons to 50' below street level.

STORES AND WAREHOUSES.

Watkins Department Store, Hamilton, Ont.
Mason & Risch, Piano Showrooms, Toronto, Ont.

INTAKES AND CONDUITS.

Concrete Conduit and Intake, Montreal Water Works.
36" C. I. Intake and Concrete pump well, Can. Spool Cotton Co., Montreal.
Conduits for pipe lines, etc., Can. Spool Cotton Co., Montreal.

STONE QUARRIES.

Operating Quarries and Crushing Plant at Caughnawaga, P.Q., capacity 300 tons daily, delivering to Montreal by water.

STEEL ERECTION.

Chateau Laurier, Ottawa, Ont., 2,500 tons.

FACTORIES, REINFORCED CONCRETE.

Bottling Plant, Caledonia Springs, Ont.
Flooring Mill, W. C. Edwards & Co., Ottawa, Ont.
Sawmill, Power House, etc., Bathurst Lumber Company, Bathurst, N.B.
Brewery, Sudbury Brewing Co., Sudbury, Ont.
Factory, McGregor-Banwell Fence Co., Walkerville, Ont.
Dry Kilns, Knight Bros., Burke's Falls, Ont.
Cattle Buildings, 8 acres roof area, Union Stock Yards, Toronto, Ont.
Factory and Office Burrell Rock Drill Co., Belleville, Ont.
Peabody Overall Co., Walkerville, Ont.

MILL CONSTRUCTION.

Factory, Massena Mineral Filter, Massena, N.Y.
Factory, Indestructible Fibre Co., Massena, N.Y.
Warehouse, Montreal Steel Works, Montreal.
Warehouse, McLaughlin Carriage Co., Montreal.
Factory Addition Canadian Rubber Company, Montreal.
Warehouse and Stores Canadian Rubber Company, Toronto, Ont.

BISHOP CONSTRUCTION

COMPANY, LIMITED

ENGINEERS and CONTRACTORS

MONTREAL
3 BEAVER HALL SQUARE

TORONTO
TRADERS BANK BLDG.