

TRAVELLER'S GUIDE

Dominion Atlantic Railway

Time Table Revised to April 1st, 1919

GOING WEST			
Station	Express Daily a.m.	Express Daily p.m.	Mixed Daily a.m.
Middleton	11.37	8.10	6.20
Brockton	11.44	8.18	6.30
Lawrencetown	11.51	8.25	6.40
Paradise	11.58	8.32	6.50
Bridgetown	12.09	8.43	7.15
Tupperville	12.29	8.54	7.05
Round Hill	12.42	9.03	8.05
Annapolis	12.53	9.20	8.45
Up. Clements	12.53		9.00
Clonestown	12.59		9.10
Deep Brook	1.05		9.25
Boar River	1.15		9.45
Imbertville	1.18		9.55
Smiths Cove	1.22		10.20
Digby	1.37		

GOING EAST			
Station	Express Daily a.m.	Express Daily p.m.	Mixed Daily a.m.
Digby	12.00		1.37
Smiths Cove	12.15		1.55
Imbertville	12.19		
Boar River	12.23		2.05
Deep Brook	12.33		2.20
Clementport	12.43		2.35
Up. Clements	12.53		2.45
Annapolis	1.05	5.15	3.00
Round Hill	1.19	5.28	3.35
Tupperville	1.29	5.37	3.50
Bridgetown	1.40	5.48	4.05
Paradise	1.51	5.59	4.45
Lawrencetown	1.58	6.06	5.00
Brockton	2.05	6.13	5.20
Middleton	2.12	6.20	5.30

R. U. PARKER,
General Passenger Agent.
GEO. E. GRAHAM,
General Manager.

H. & S. W. RAILWAY

Accom.	TIME TABLE	Accom.
Wednes- days only	IN EFFECT Jan. 5th 1919	Wednes- days only
Read down	STATIONS	Read up
11.10 a.m. Lv. Middleton	Ar. 5.00 p.m.	
11.41 a.m. "Clarence	Ar. 4.28 p.m.	
11.49 m. "Bridgetown	Ar. 4.10 p.m.	
12.32 p.m. "Granville Centre	Ar. 3.43 p.m.	
12.49 p.m. "Granville Ferry	Ar. 3.25 p.m.	
12.52 p.m. "Karsdale	Ar. 3.05 p.m.	
1.12 p.m. "Ar Port Wade	Lv. 2.45 p.m.	

Connection at Middleton with all points on H. & S. W. Railway and Dominion Atlantic Railway.
H. C. MacFARLANE
District Passenger Agent
Halifax, N. S.

Dominion Atlantic R'y To BOSTON, MONTREAL

and all points in WESTERN CANADA and UNITED STATES via DIGBY and CANADIAN PACIFIC LINES at Lowest Rates

For fares, sleeping accommodation and other information telephone or write to

R. U. PARKER
General Passenger Agent
117 Hollis Street, HALIFAX, N. S.

CASH MARKET

Prime Beef, Fresh Pork, Lamb, Chicken, Hams and Bacon, Sausages, Headcheese, Pressed Beef, Minc. Meat, Corned Beef and Pork, Salt Mackerel, Boneless Co.
Fresh Fish every Thursday.

Thomas Mack

January Fifth 1920

Our classes resume after the Christmas recess. Despite the fact we are the largest and best equipped Commercial School in Eastern Canada our space is heavily taxed and we admit only by prior arrangement.

MARITIME BUSINESS COLLEGE
HALIFAX, N. S.
E. KAULBACH, C. A.

CASH FOR OLD STAMPS. Collections or odd lots bought; special prices for those used before 1871. Get the covers of those old letters in the attic and bring or send them to me. It's like finding money.
J. C. MERRILL, Bridgetown.
Monitor Office of St. James Hotel.

NATURAL GAS DEVELOPMENT

The first discovery of natural gas in the Province of Alberta of which we have record, took place in May, 1884, at Alderson, a station on the main line of the C.P.R., 35 miles west of Medicine Hat. The railway construction gang, boring for water, struck a heavy pocket of gas at a depth of 1,300 feet. A little later in the same year, gas was also discovered at Cassils, 6 miles further west, but while this well soon choked, that at Alderson continued to flow for many years.

In 1890, Medicine Hat, then but a small town, sank a well and found a small supply at 700 feet; four years later another attempt was made, and history tells how at the eleventh hour, with money all spent—facing bankruptcy—and despair, and gloom in the hearts of the mayor and city council, a sensational flow was uncovered at a depth of twelve to thirteen hundred feet. The cheap, apparently unlimited fuel supply, both for commercial and domestic purposes, is largely accountable for that city's growth and present prosperous condition.

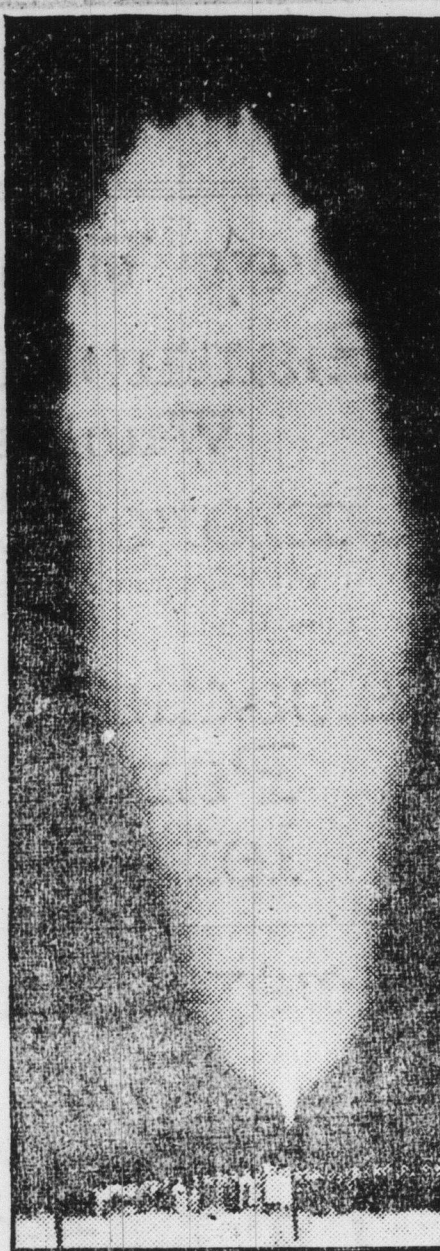
There are several known gas fields in the Province of Alberta, but as yet only two have been utilized for commercial purposes to any considerable extent, namely, the Medicine Hat and Bow Island fields. Bow Island lies on the railway line about half way between Medicine Hat and Lethbridge, 180 miles south-east of Calgary.

In 1912 the supply was piped into the city of Calgary, as well as distributed en route to the city of Lethbridge, Macleod and other towns where it is used for both domestic and commercial purposes.

In the neighborhood of Pelican Rapids, Athabasca River, gas springs were known at least a century ago, and travellers going up and down the river, into the Peace River Country have cooked their meals there. Further well-known gas reserves are the Foremost Field, south of Bow Island, the Barnwell Field, midway between Bow Island and Lethbridge and the Viking Field, 33 miles east of Edmonton, and were it not for the difficulty of obtaining adequate piping, it is probable that this supply would have been utilized two or three years ago to furnish light, heat and power to Alberta's capital.

Prospecting is now going on in the Monarch Field, 40 miles southwest of Calgary, and at the Okotoks Field, 27 miles south. Along the foothills of the Rocky Mountains, in the vicinity of the apex of a well defined anticline similar to that one in the Okotoks Field, there are many pronounced gas seepages, and it seems probable that as in the former field, which had also a gas seepage, it will be a commercial producer.

The Imperial Oil Co. has commenced prospecting for petroleum along the last mentioned anticline, and it is stated, intends to carry vigorous prospecting from the International Boundary northwards to Hudson Hope on the Peace River. The production of both petroleum and natural gas seems favorable. This company also proposes further prospecting at other parts away from the mountains, where it has selected grounds for operation. In many parts of the province in drilling for petroleum, gas has been found; and



Gas Well at Medicine Hat, Alberta.

indications are that there is an immense gas field remaining yet to be tapped, the exact location, size and probable capacity of which can only be proven by testing.

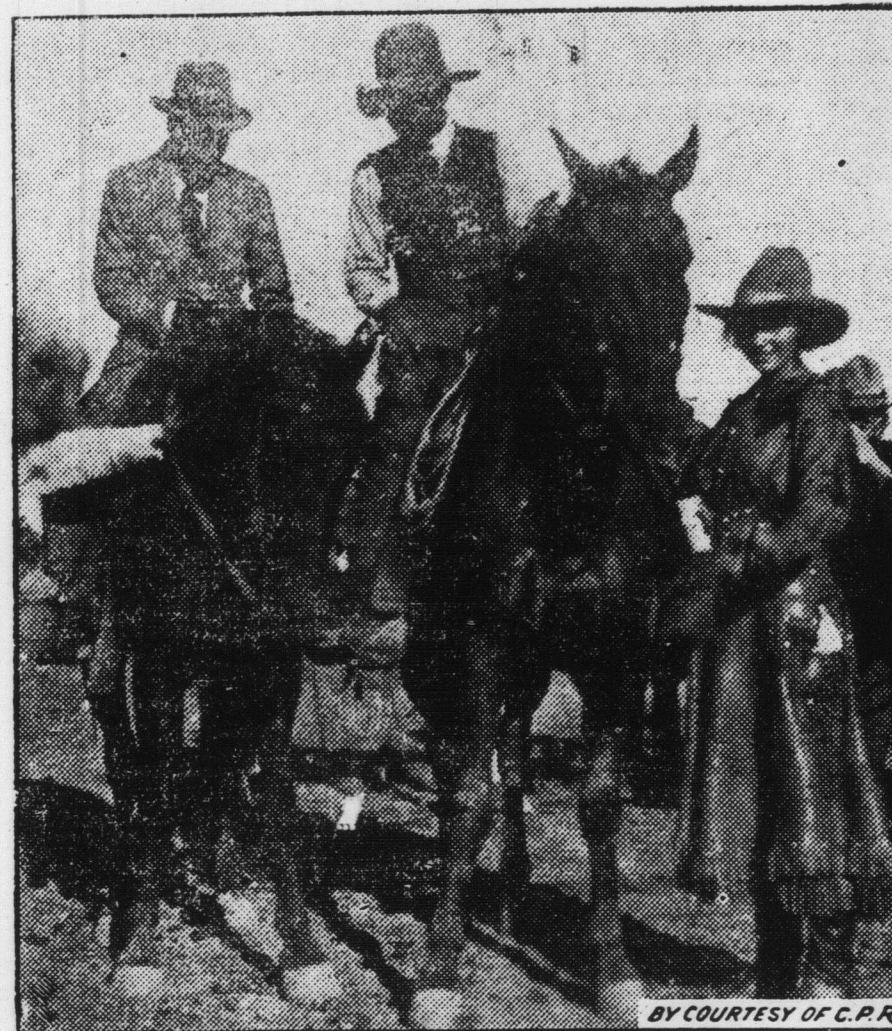
According to the report of the Canadian Bureau of Mines, in 1915, there was produced 4,378,947,000 cubic feet valued at \$1,037,919, which is equivalent to 23.7c. per thousand cubic feet—the heat that could be obtained from upwards of two hundred thousand tons of coal.

The Natural Gases of Alberta are known as "wet" and "dry." The former is a profitable source of gas line, and already a considerable amount of that fluid has been produced, with a probable greatly increased production in the near future. The Medicine Hat and Bow Island fields are "dry," but there is no reason to conclude that much of the gas yet to be found will be "dry"—rather the reverse.

Helium, a non-combustible gas, very nearly as light as hydrogen and invaluable for balloons, has been extracted in considerable quantity from the Bow Island gas at Calgary, and shipped to Great Britain for war purposes. The termination of the war, has stopped the manufacture, probably, however, only temporarily.



BY COURTESY OF C.P.R.



BY COURTESY OF C.P.R.



BY COURTESY OF C.P.R.



BY COURTESY OF C.P.R.

A number of snapshots of the Prince of Wales taken during his recent trip through Canada.

Children Cry for Fletcher's

CASTORIA

Fletcher's Castoria is strictly a remedy for Infants and Children. Foods are specially prepared for babies. A baby's medicine is even more essential for Baby. Remedies primarily prepared for grown-ups are not interchangeable. It was the need of a remedy for the common ailments of Infants and Children that brought Castoria before the public after years of research, and no claim has been made for it that its use for over 30 years has not proven.

What is CASTORIA?

Castoria is a harmless substitute for Castor Oil, Paregoric, Drops and Soothing Syrups. It is pleasant. It contains neither Opium, Morphine nor other narcotic substance. Its age is its guarantee. For more than thirty years it has been in constant use for the relief of Constipation, Flatulency, Wind Colic and Diarrhoea; allaying Feverishness arising therefrom, and by regulating the Stomach and Bowels, aids the assimilation of Food; giving healthy and natural sleep. The Children's Comfort—The Mother's Friend.

GENUINE CASTORIA ALWAYS

Bears the Signature of
Wm. H. Fletcher
In Use For Over 30 Years
THE CENTAUR COMPANY, NEW YORK CITY

LUMBERMEN'S

SUPPLIES

- Peaveys
- Chains
- Axes
- Camp Outfits
- Cross Cut Saws
- Sled Shoe Steel
- Axe and Peavy Handles
- Harness and Bells

Royal Purple Stock Food, Liniment and Condition Powders

KARL FREEMAN

BRIDGETOWN, N. S.

Everything in Hardware, and Builder's Supplies

How to Sell Your Place

A wide awake Real Estate Agent gets in touch with practically all the available buyers. So to have your property put before the largest possible number of intending buyers get the **livest** Real Estate Agency you can find to handle your place. We have a list in our office of over 400 intending buyers.

A successful Real Estate Man is a good salesman. Now selling any article, as every one knows, calls for a specialized knowledge of the line sold, and of how to handle the class of buyers encountered. Our manager has a first hand knowledge of farms, himself being a farmer—and we evidently know how to suit men who want farms, as our books show that we have sold 47 places for over a quarter of a million dollars since April 1st this year.

An honest Real Estate Man will list your property with an agreement that protects you as well as himself.

We beg to call your attention to our new listing form which protects the seller against unearned charges by the Agency.

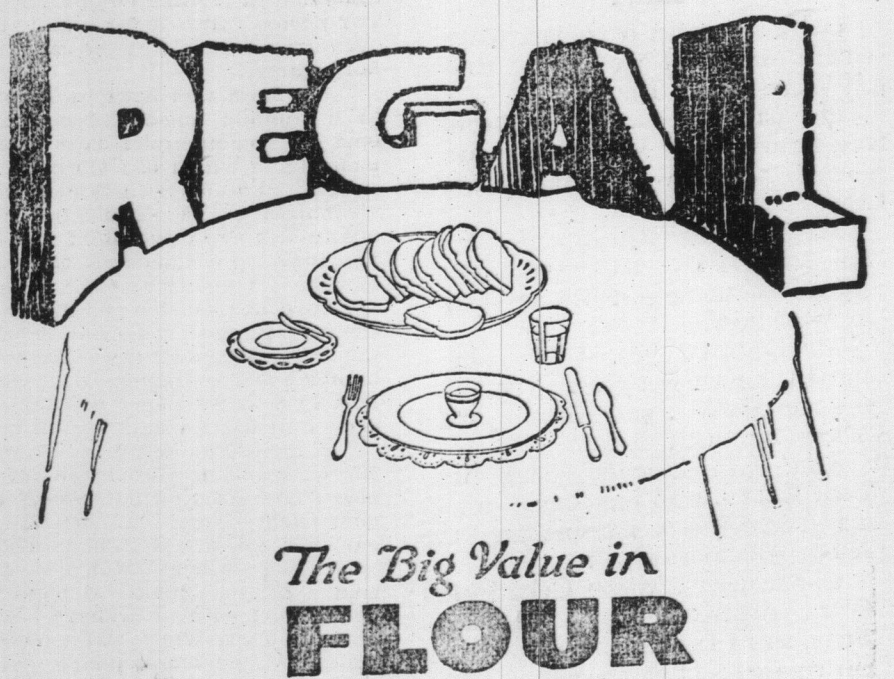
The Valley Real Estate Agency, Wolfville, N. S.

APPRECIATION

I certainly appreciate the increased patronage given me during the Christmas season and throughout the past year. I wish to thank all my old and new customers for the same and solicit a continuance of their trade for 1920.

O. P. COVERT, Granville Street

Celebration in front of Parliament Buildings, Victoria, V.C. Two of the Fair Sex Holding the Colors.



The Big Value in FLOUR

PLACE on your table, bread made of "REGAL FLOUR" and see how your family will like it. The test of the table is the supreme test.

The St. Lawrence Flour Mills Co. Limited
MONTREAL

